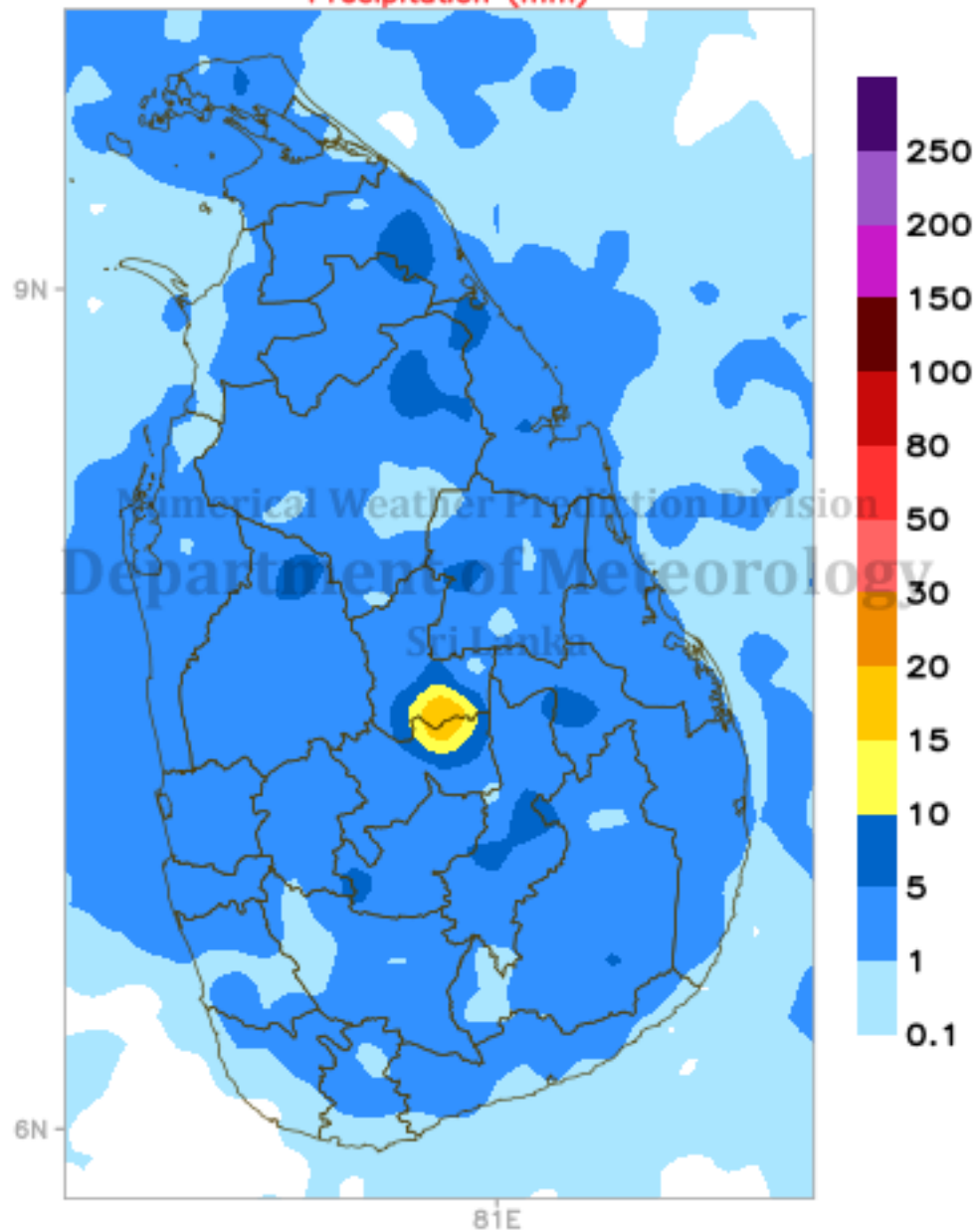
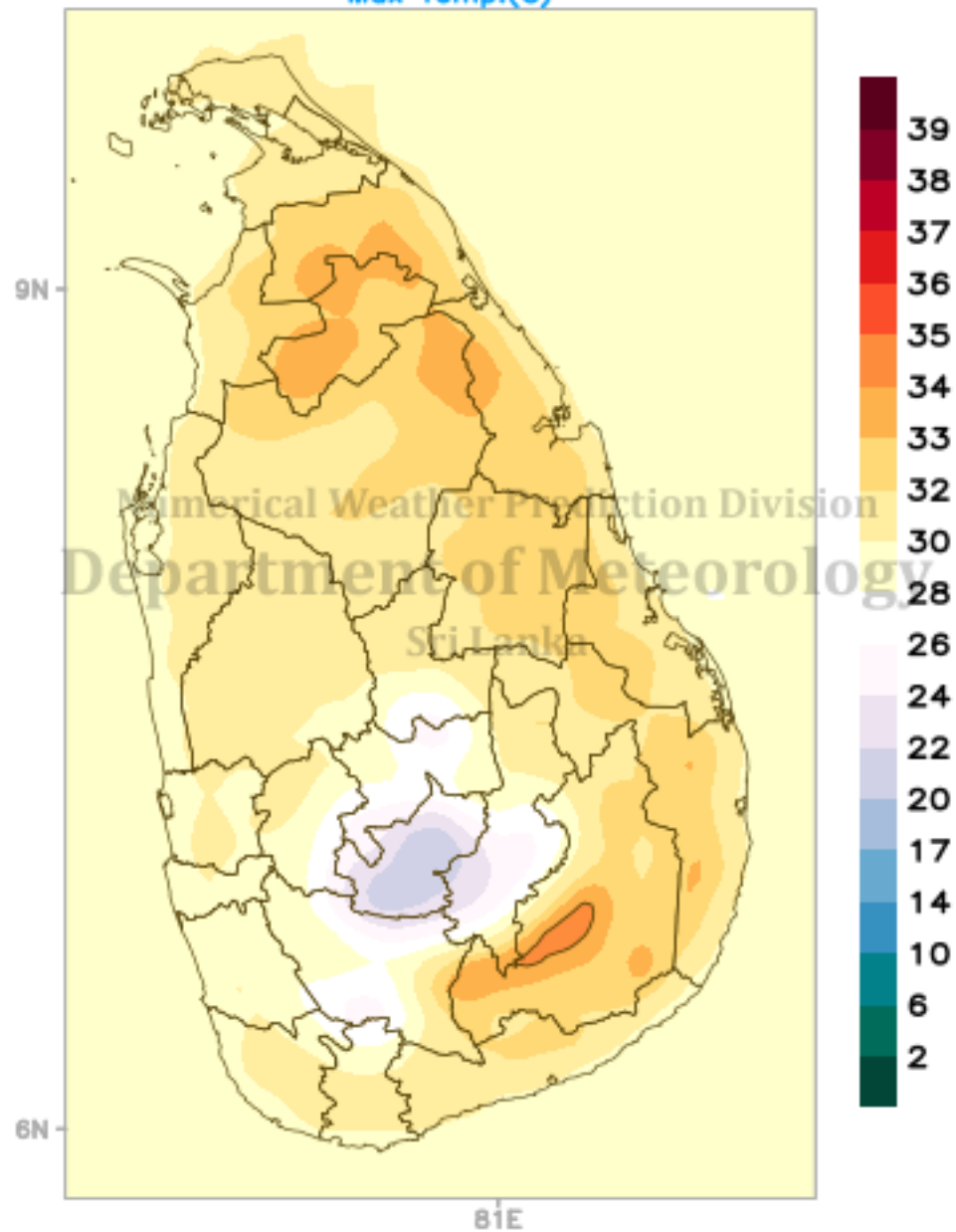


ECMWF Forecast (24hr) valid for 00UTC of 25/03/2022

Precipitation (mm)

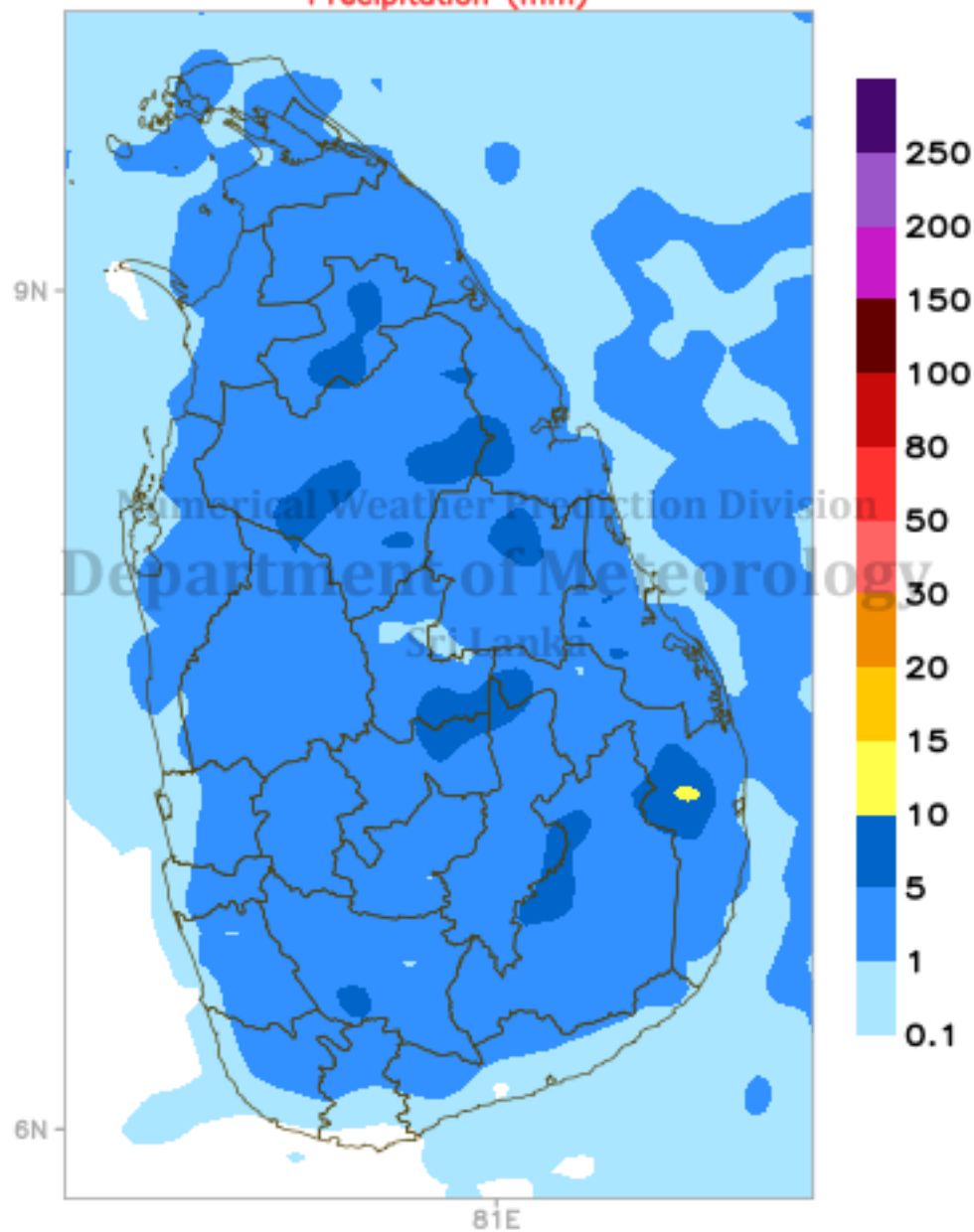


Max Temp.(C)

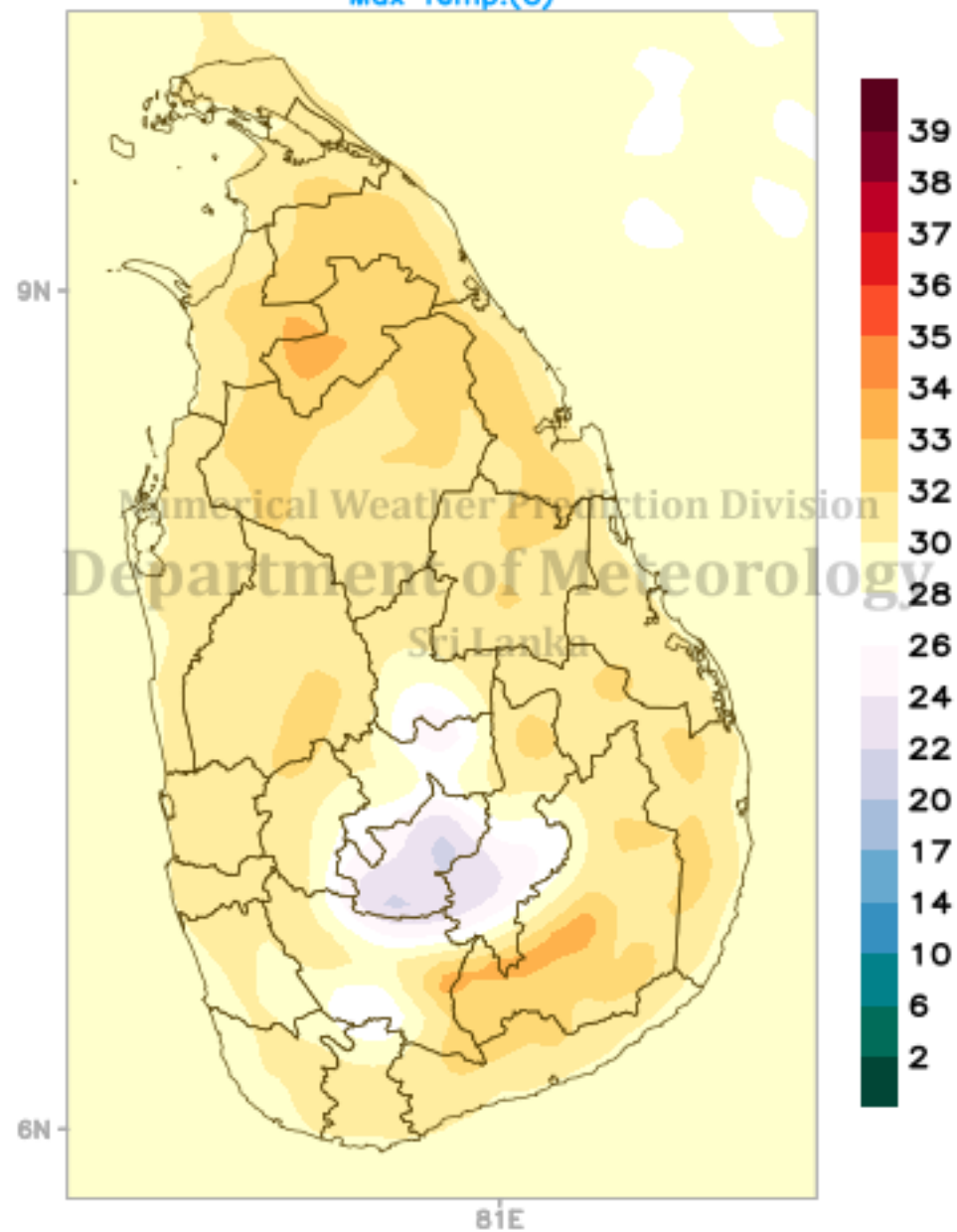


ECMWF Forecast (24hr) valid for 00UTC of 26/03/2022

Precipitation (mm)

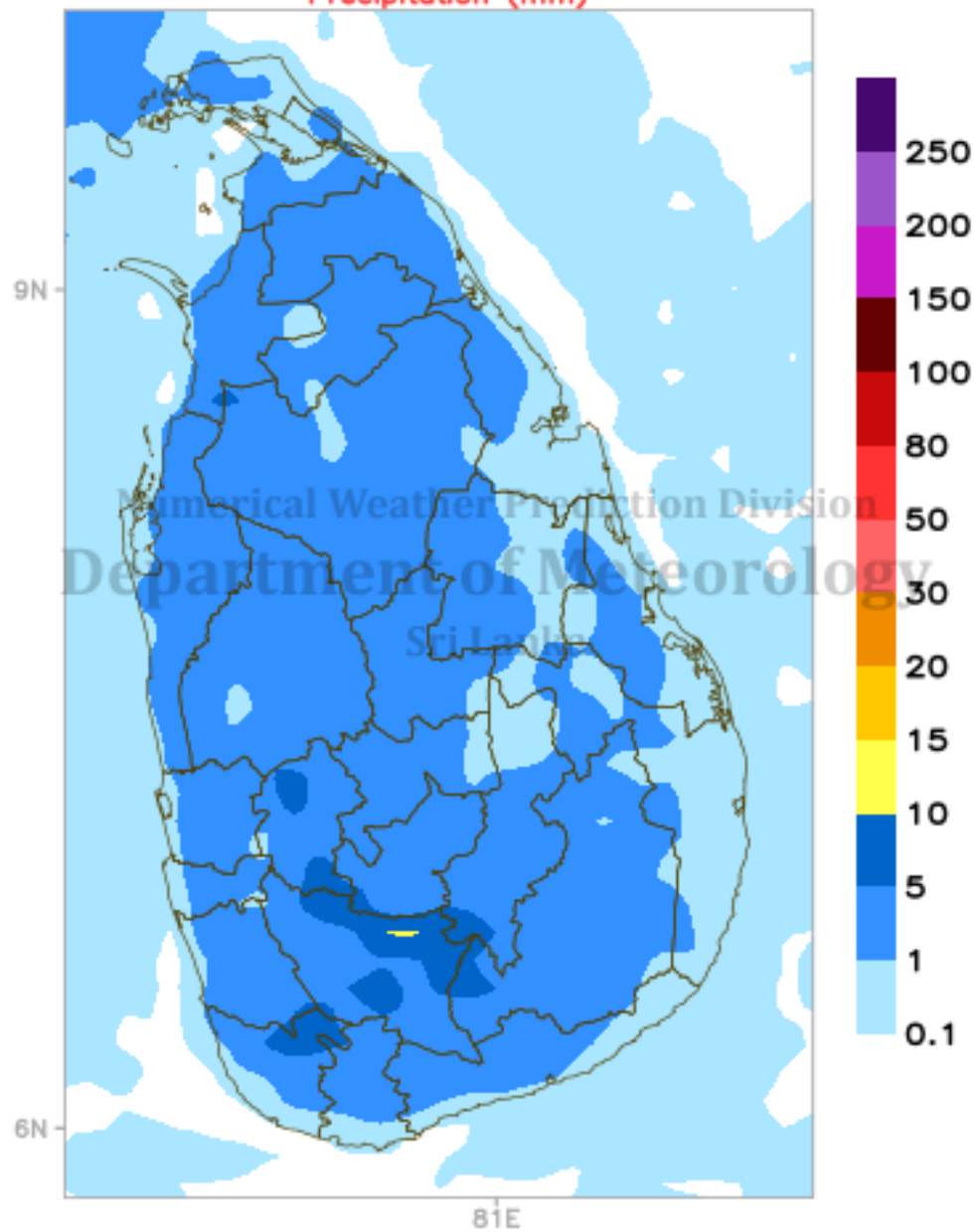


Max Temp.(C)

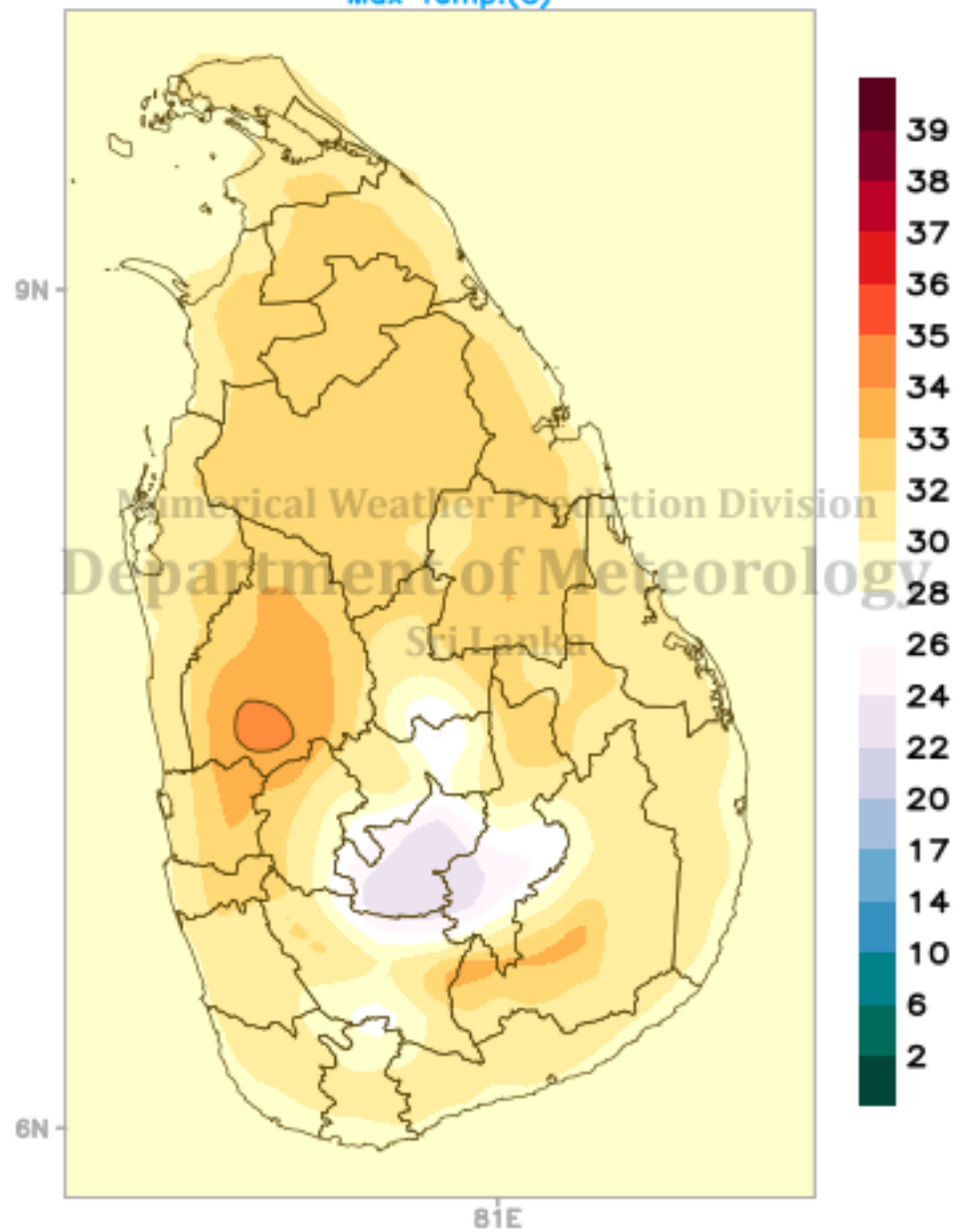


ECMWF Forecast (24hr) valid for 00UTC of 27/03/2022

Precipitation (mm)

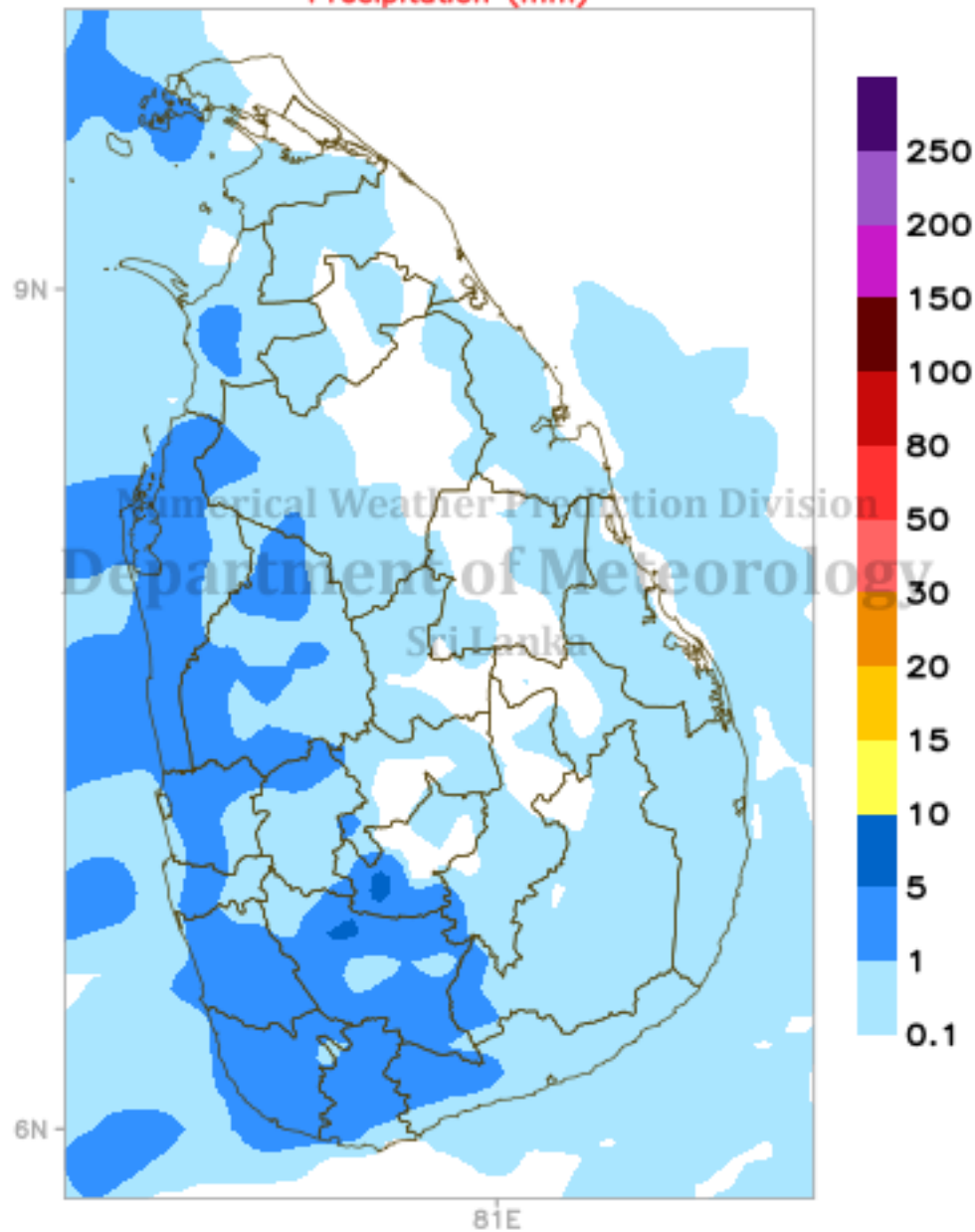


Max Temp.(C)

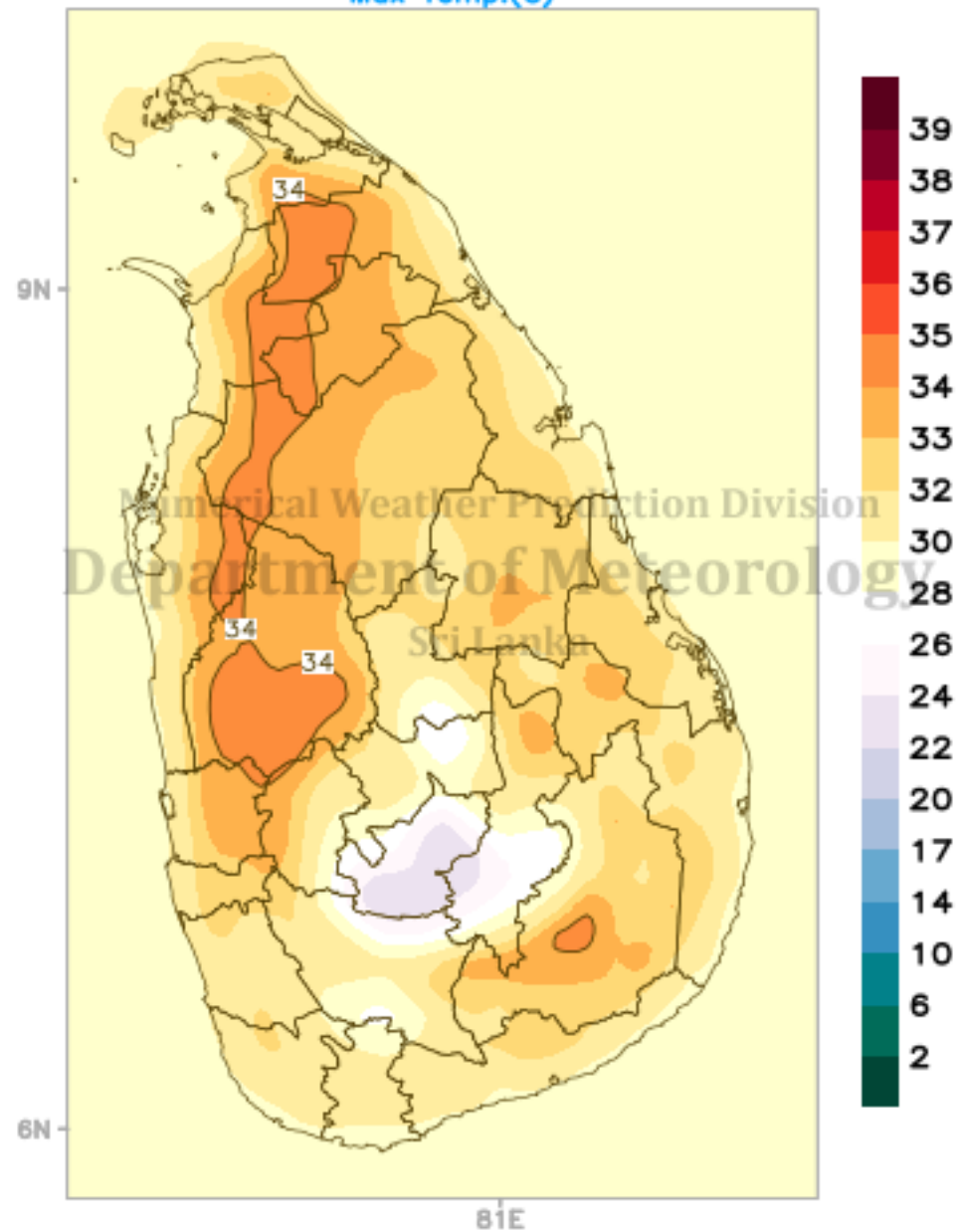


ECMWF Forecast (24hr) valid for 00UTC of 28/03/2022

Precipitation (mm)

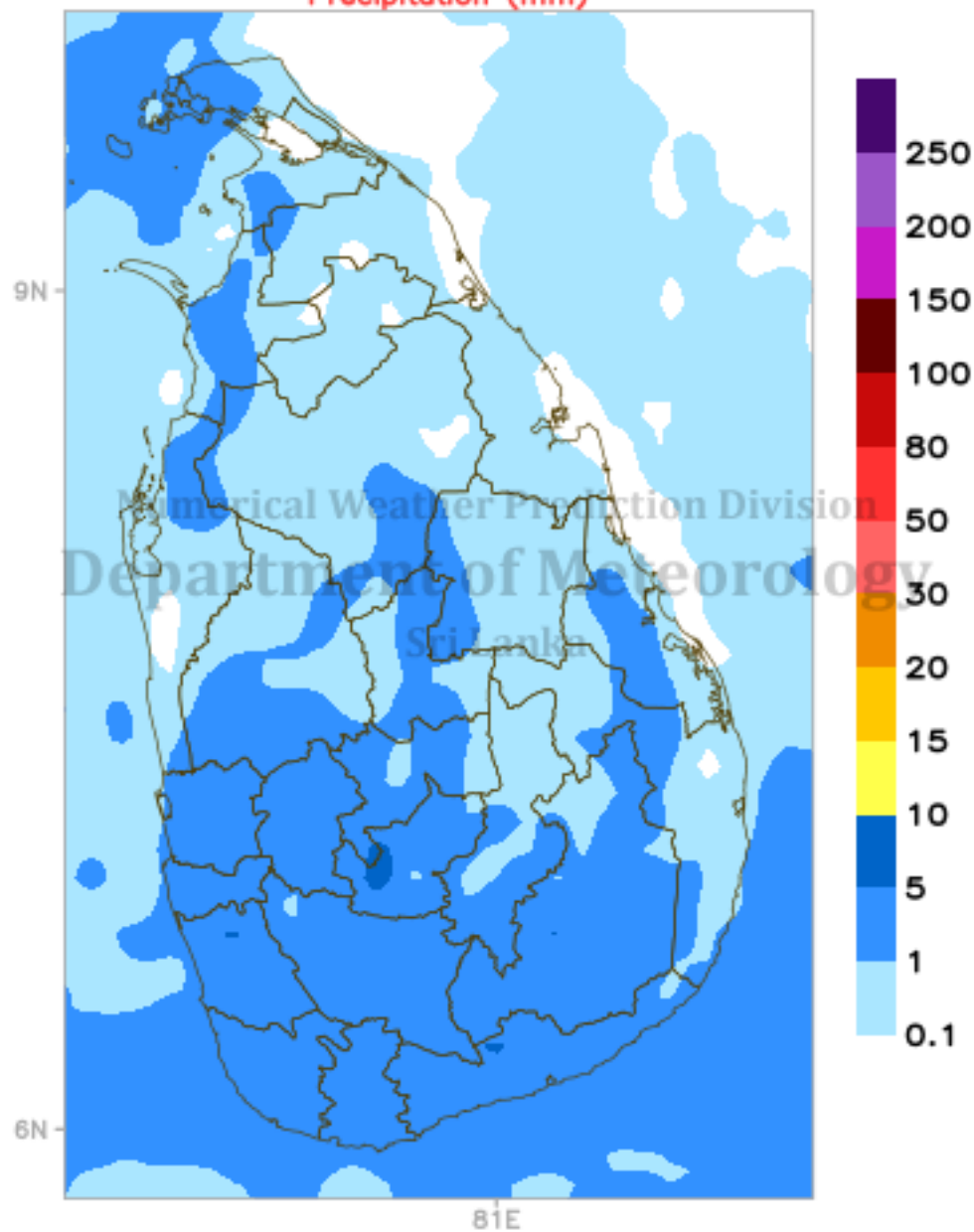


Max Temp.(C)

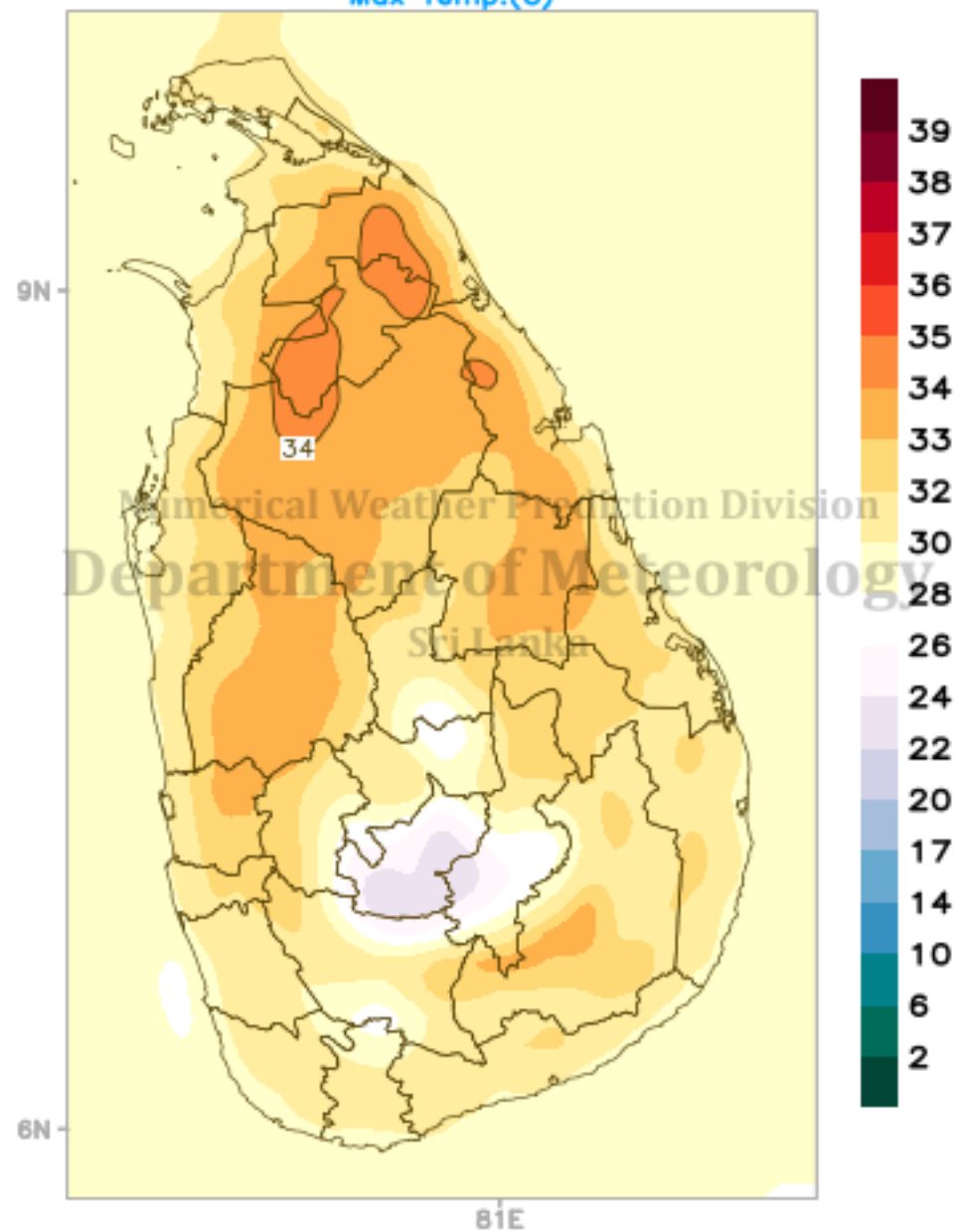


ECMWF Forecast (24hr) valid for 00UTC of 29/03/2022

Precipitation (mm)

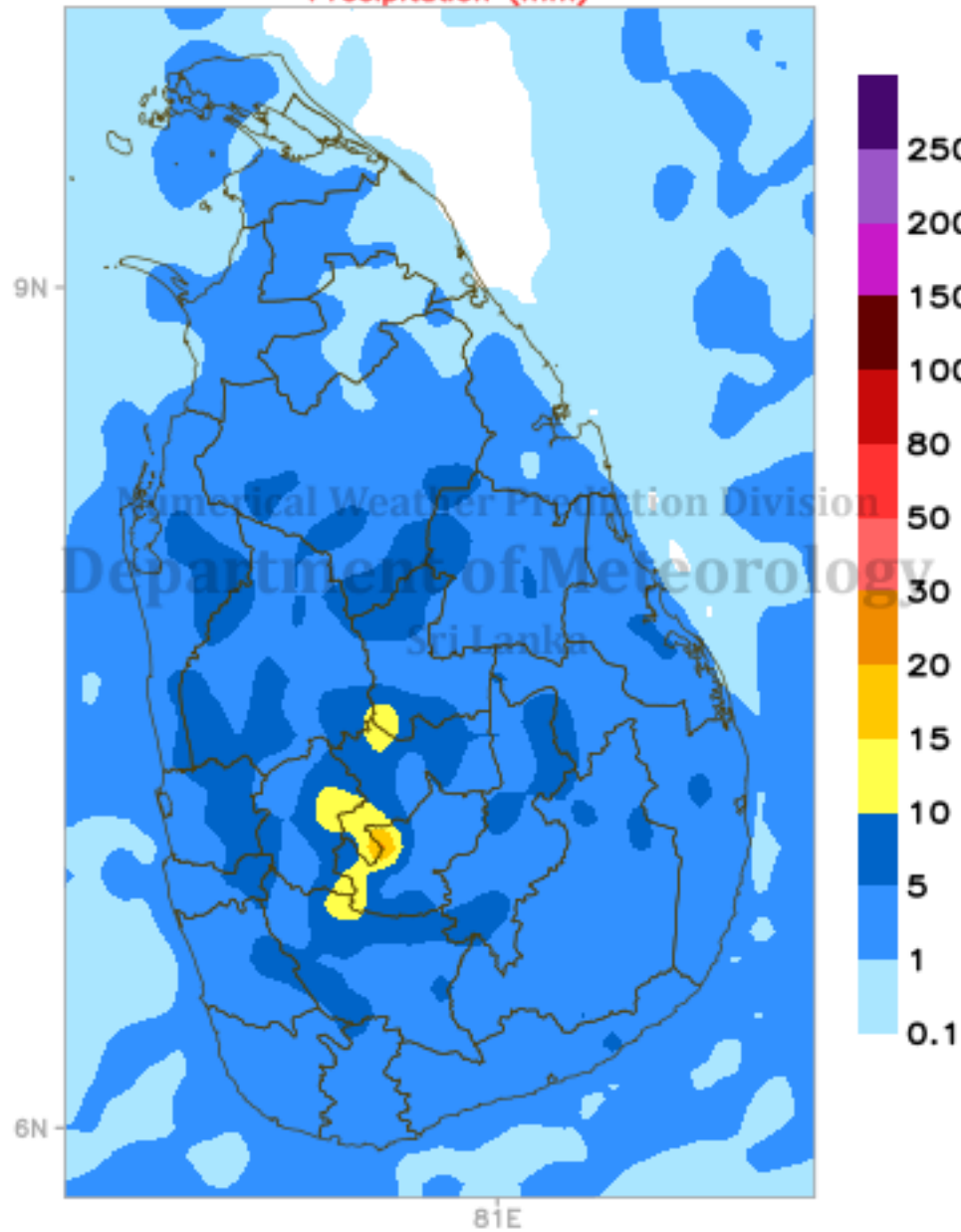


Max Temp.(C)

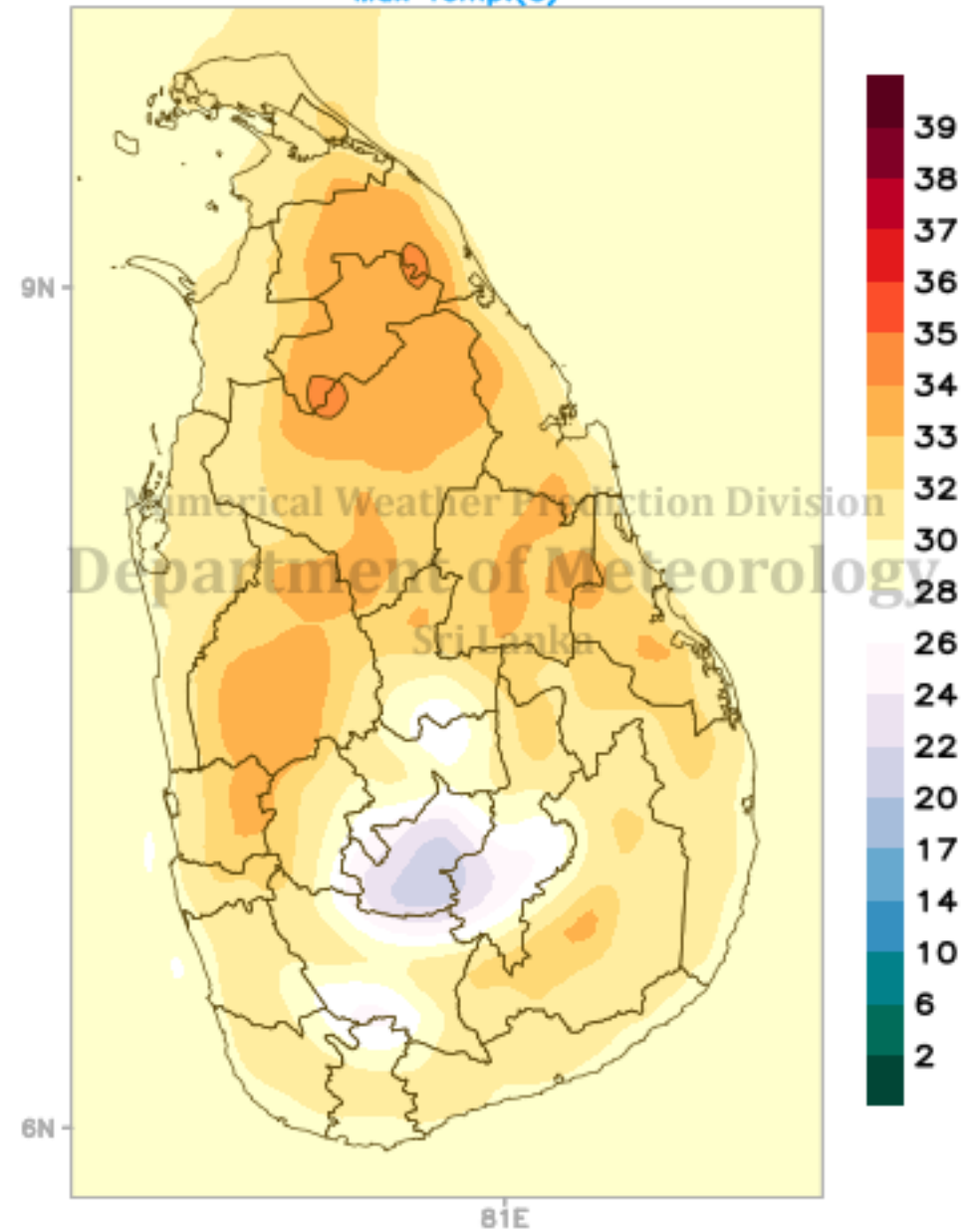


ECMWF Forecast (24hr) valid for 00UTC of 30/03/2022

Precipitation (mm)

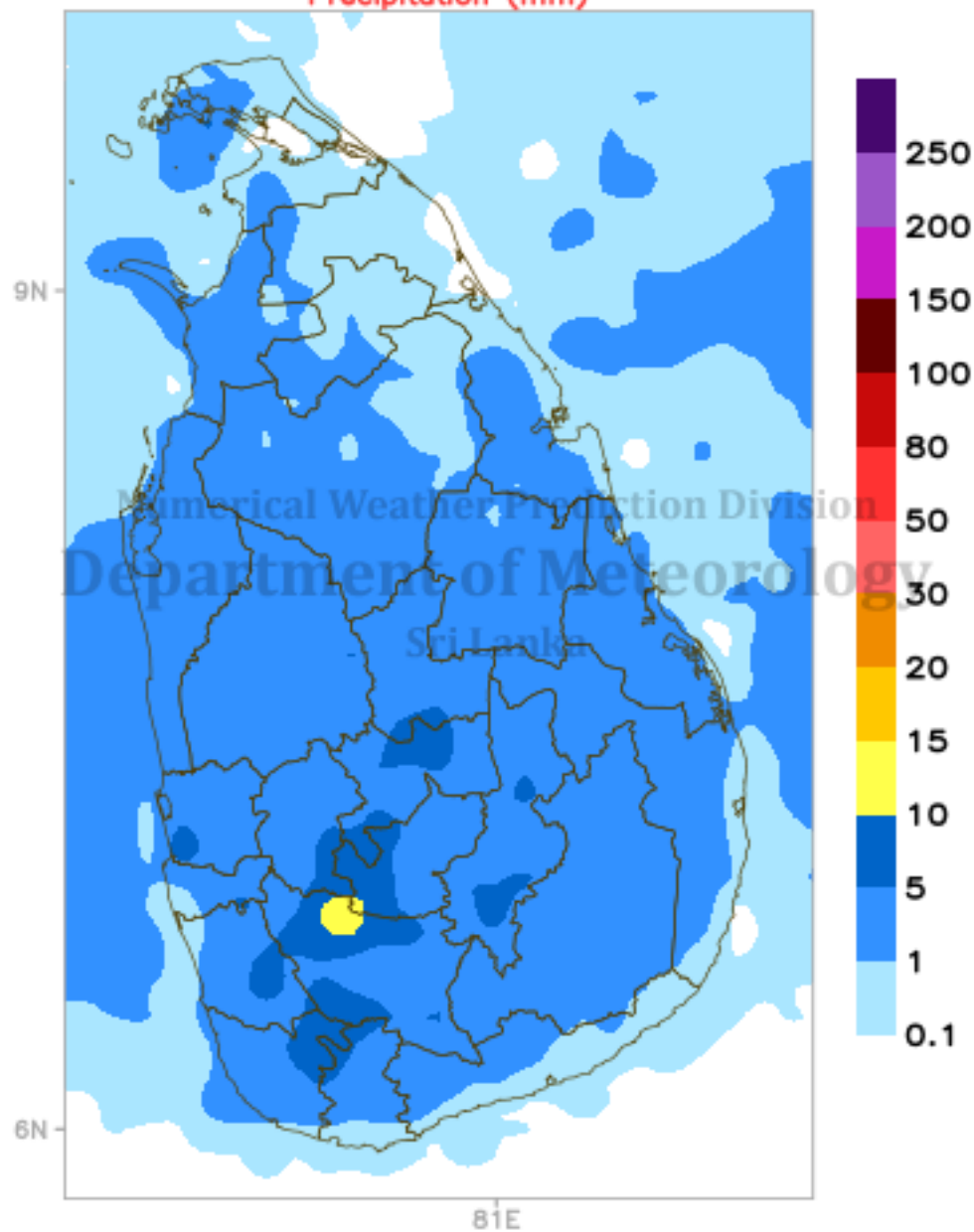


Max Temp.(C)

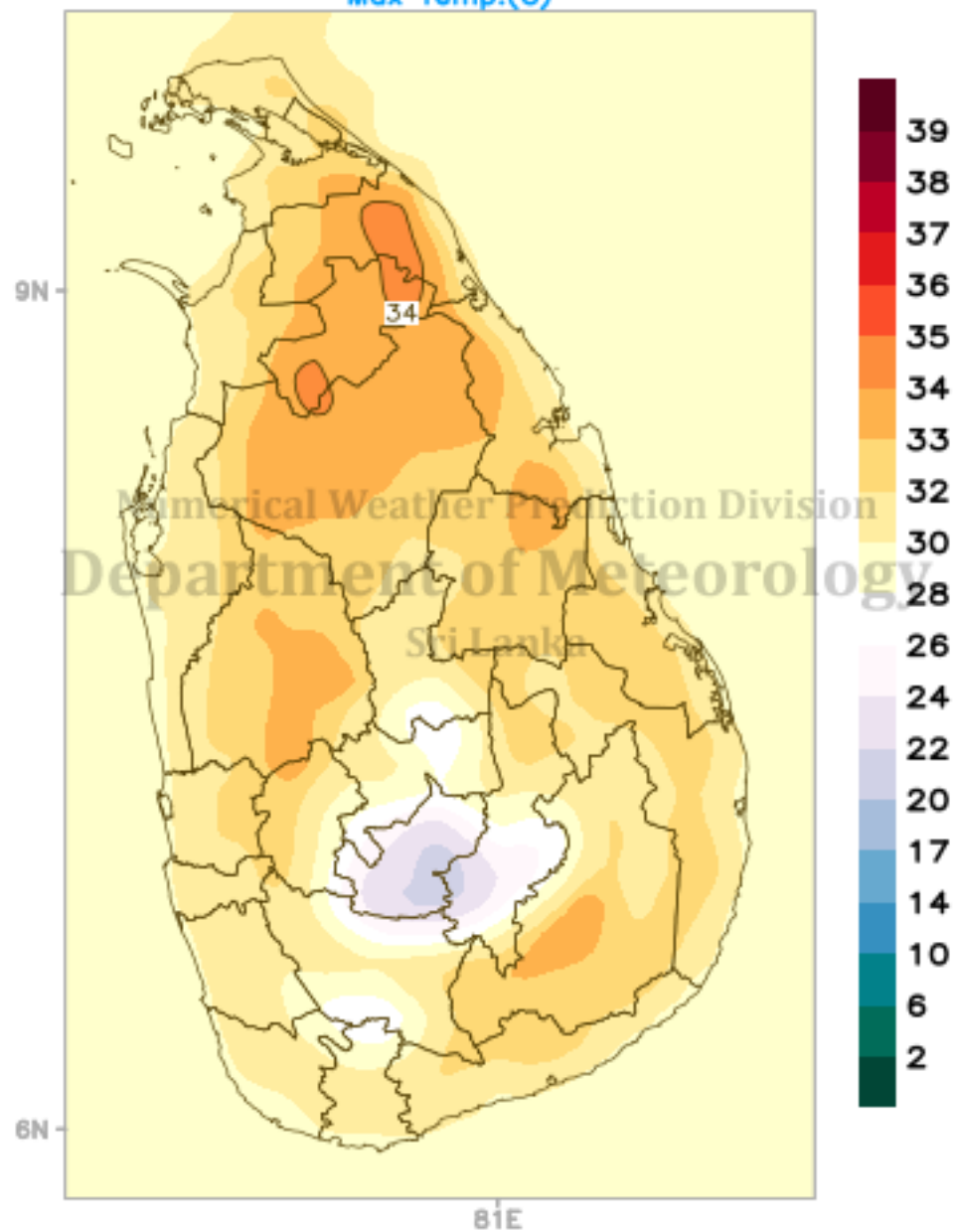


ECMWF Forecast (24hr) valid for 00UTC of 31/03/2022

Precipitation (mm)

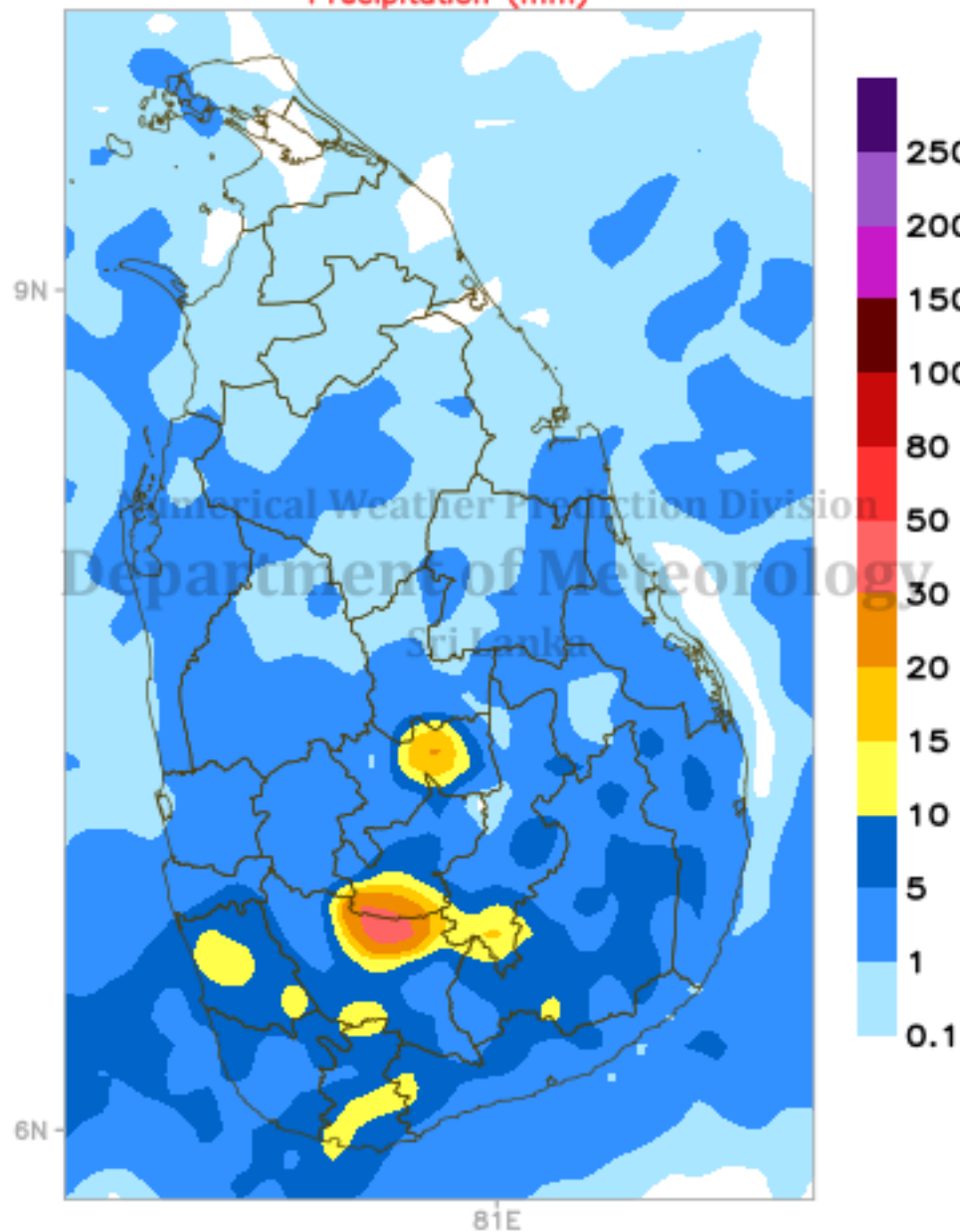


Max Temp.(C)

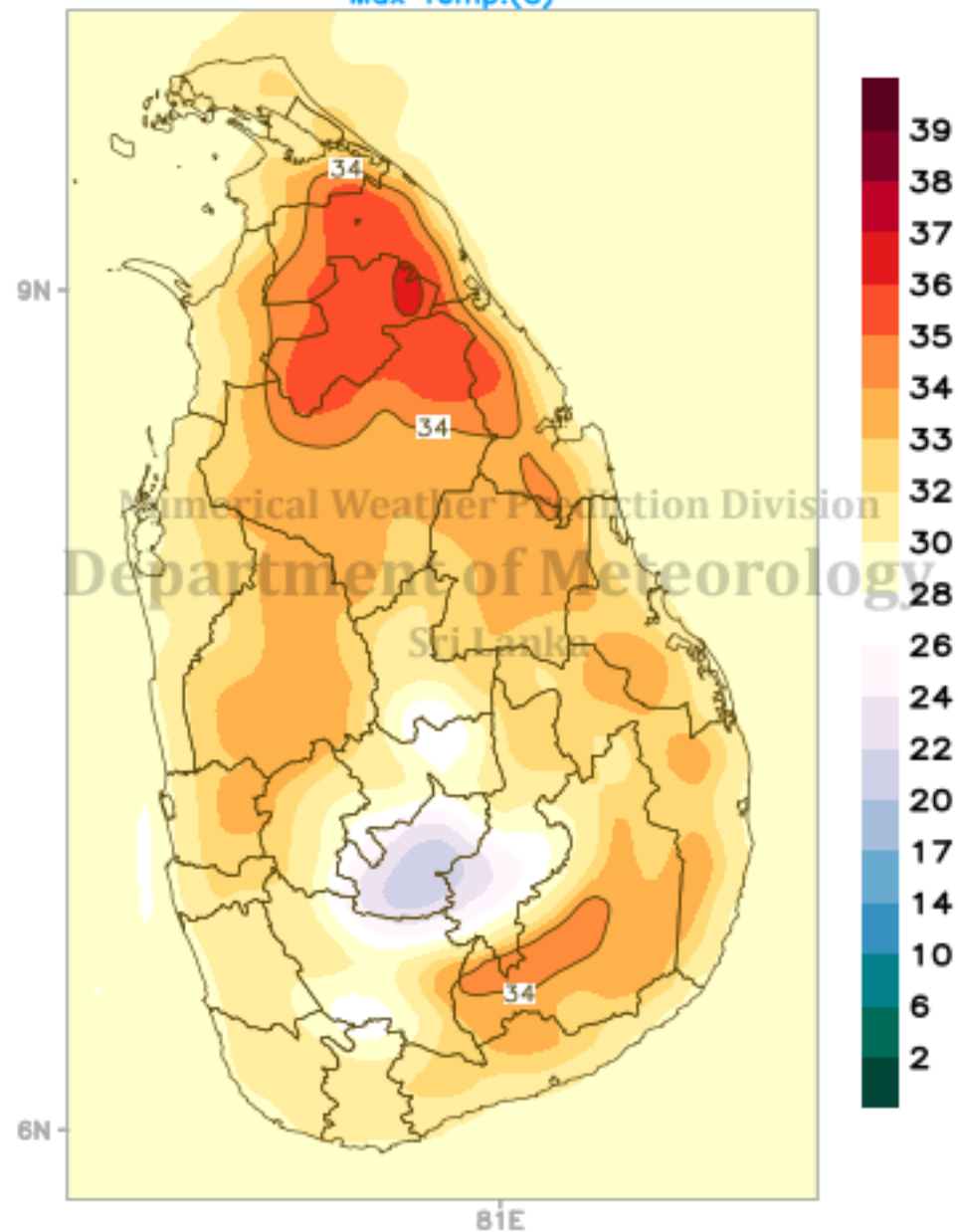


ECMWF Forecast (24hr) valid for 00UTC of 01/04/2022

Precipitation (mm)

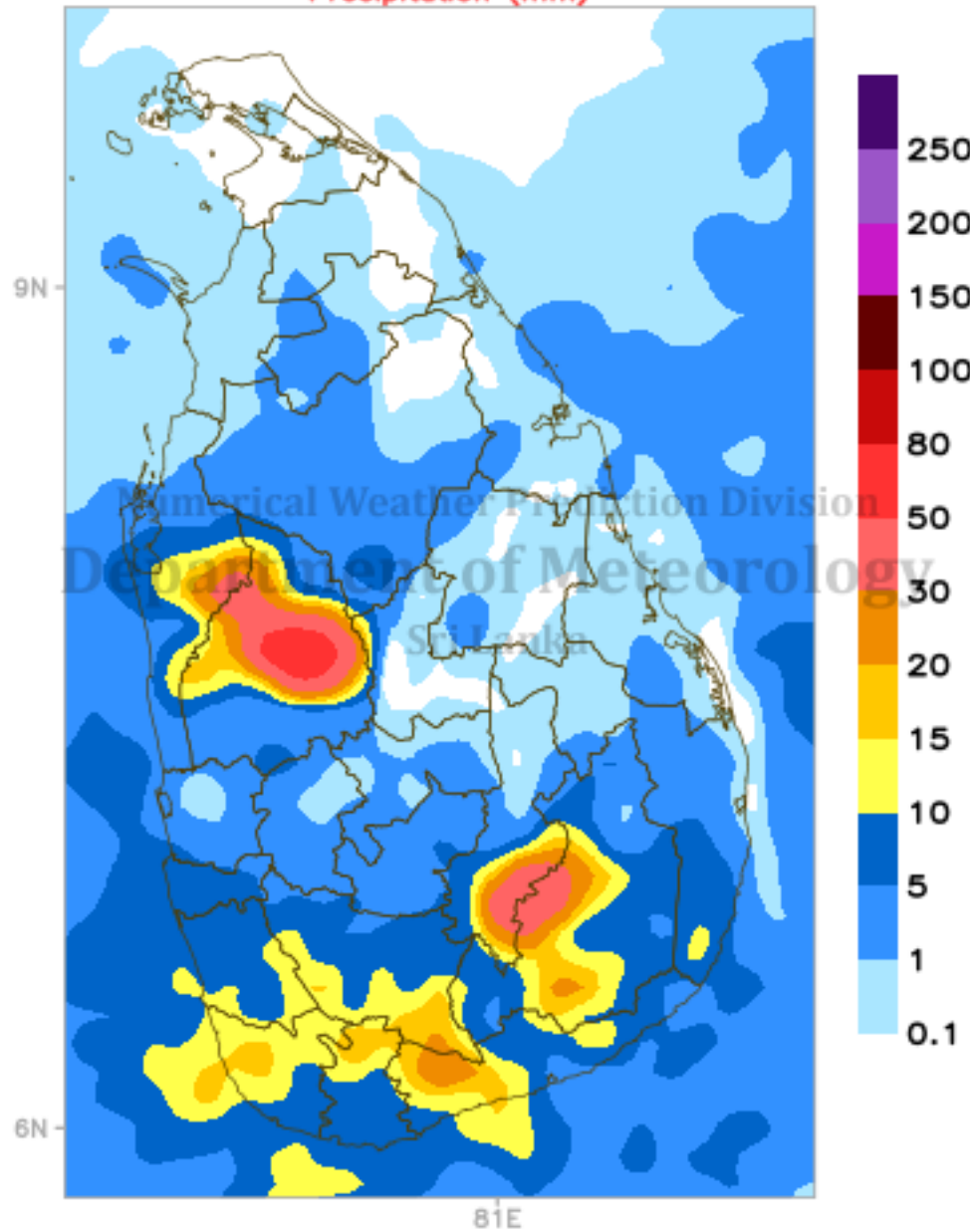


Max Temp.(C)



ECMWF Forecast (24hr) valid for 00UTC of 02/04/2022

Precipitation (mm)



Max Temp.(C)

