



Bulletin No: 01  
COLOR: Amber

WW/TC/18/11/09/01

## Special Advisory of a Low Pressure Area

Issued by the Natural Hazards Early Warning Centre  
Issued at 03.00 p.m. 09<sup>th</sup> November 2018

**For naval and fishing community in deep sea over central parts of Andaman Sea**

### PLEASE BE AWARE!

The low pressure area is located over central parts of Andaman Sea and it is very likely to become more marked during next 24 hours.

Naval and fishing communities are requested to be attentive about advisories issued by the Department of Meteorology in this regard.

### ADVISORIES

#### 1. Winds

Winds speed will be 30-40 kmph over these sera areas, and the wind speed can increase up to 50 kmph at times.

Temporarily strong gusty winds (up to 70-80 kmph) can be expected during thundershowers.

#### 2. Sea Condition

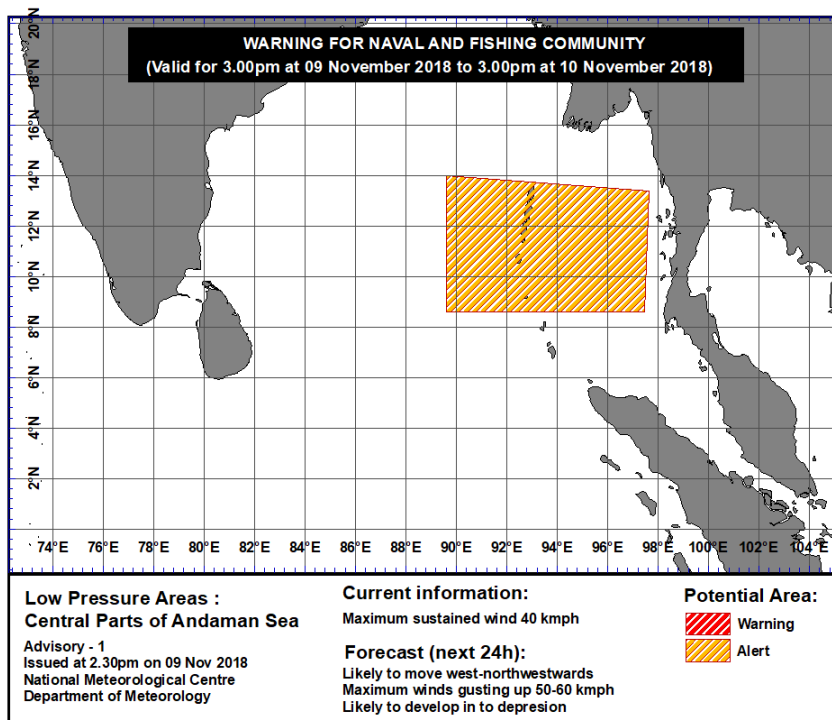
These sera areas can be rough at times

Rough seas can be expected during thundershowers too.

### ADVISORY FOR NAVAL AND FISHING COMMUNITY

It is very likely to move west northwestwards and concentrate into a depression during subsequent 24 hours and into a cyclonic storm thereafter.

- Fishermen are advised to be vigilant in this regards



The next bulletin will be issued at 2.00 pm at 10<sup>th</sup> November