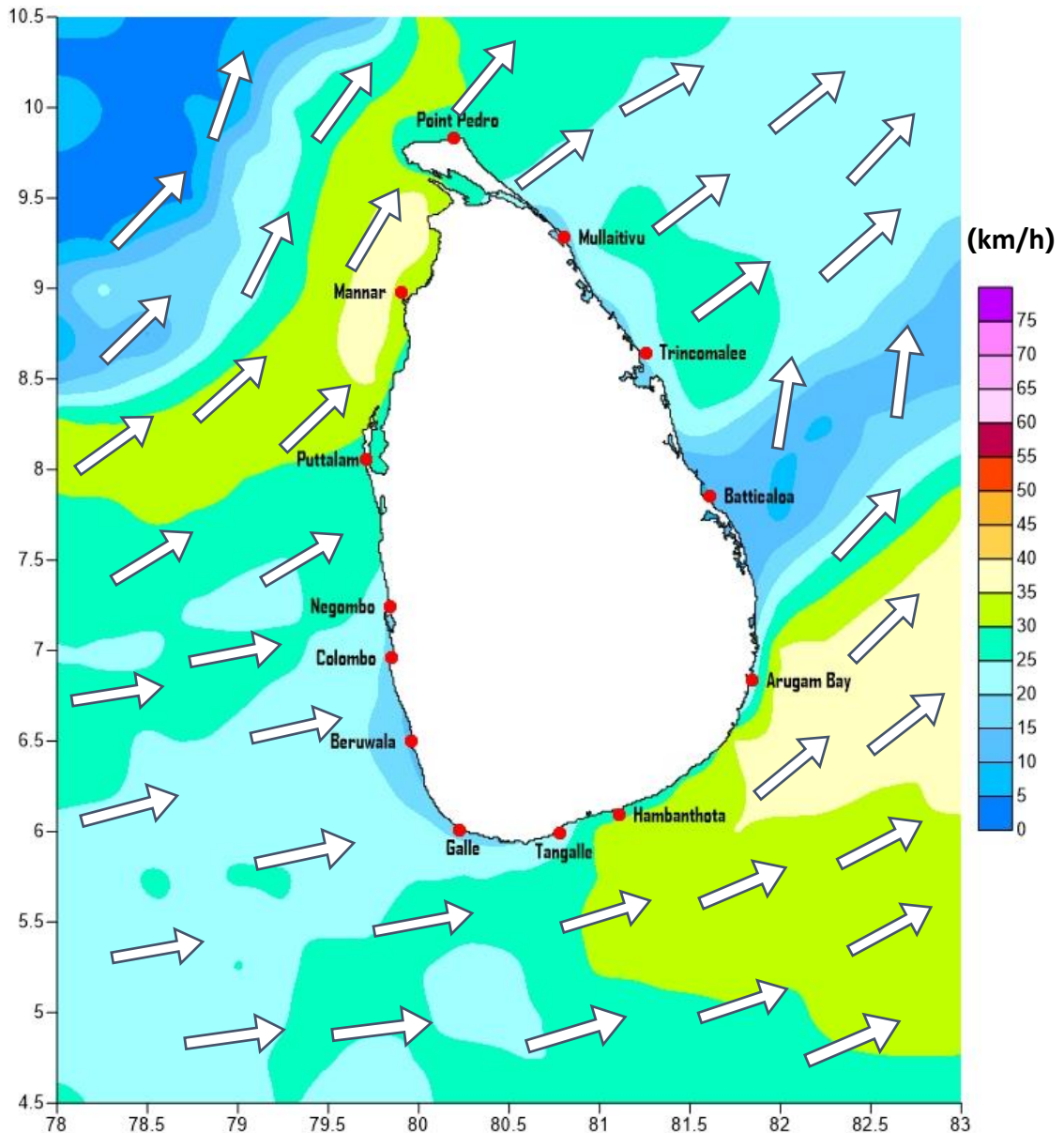


# Weather Forecast For Fishery and Naval Community

## Marine weather forecast for sea areas around the island

Issued at 04.00 p.m. on 15 May 2019

Marine weather forecast for 05.30 a.m. to 05.30 p.m. on 16/05/2019



Marine Division  
Department of Meteorology  
Colombo 07, Sri Lanka  
+94 112686686

For Safer Shipping



# Weather Forecast For Fishery and Naval Community

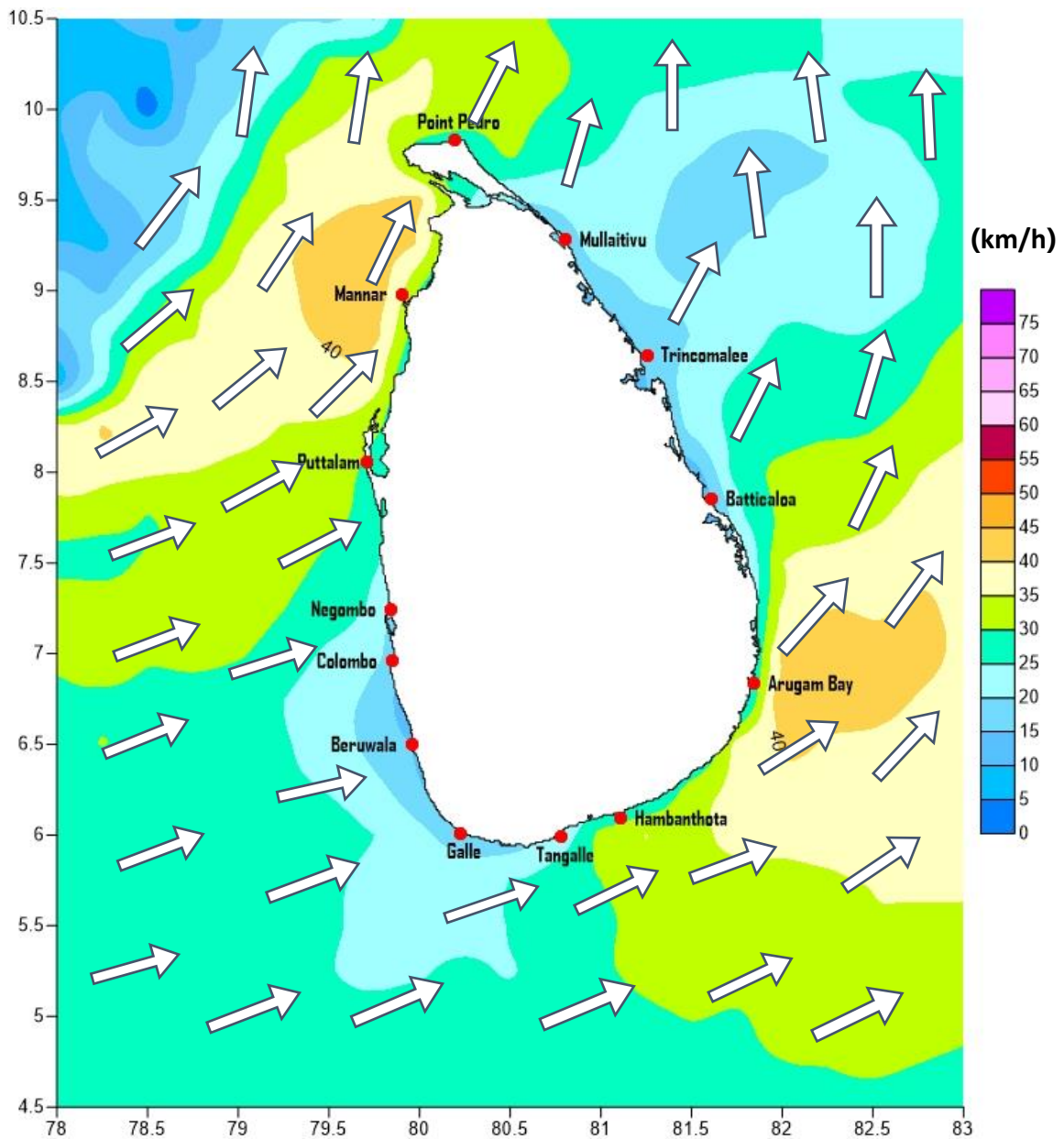
Sea Area	Wind Speed	Wave Height	Sea Condition	Weather
Puttalam to Mannar	30-40 kmph ; 50 kmph at times.	1.25-2.5 m ; 3.5m at times.	Moderate; Rough at times.	Mainly fair.
Mannar to Kankasanthurai	30-40 kmph ; 50 kmph at times.	1.25-2.5 m ; 3.5m at times.	Moderate; Rough at times.	Mainly fair.
Kankasanthurai to Trincomalee	30-40 kmph.	1.25-2.5 m.	Moderate.	Mainly fair.
Trincomalee to Batticaloa	30-40 kmph.	1.25-2.5 m.	Moderate.	Mainly fair.
Batticaloa to Pottuvil	30-40 kmph ; 50 kmph at times.	1.25-2.5 m ; 3.5m at times.	Moderate; Rough at times.	Mainly fair.
Pottuvil to Hambantota	30-40 kmph ; 50 kmph at times.	1.25-2.5 m ; 3.5m at times.	Moderate; Rough at times.	Showers or thundershowers are likely at Several places
Hambantota to Matara	30-40 kmph.	1.25-2.5 m.	Moderate.	Showers or thundershowers are likely at Several places
Matara to Colombo	20-30 kmph.	0.75-1.25 m.	Slight.	Showers or thundershowers are likely at Several places
Colombo to Puttalam	30-40 kmph.	1.25-2.5 m.	Moderate.	Showers or thundershowers are likely at Several places

**\*\*Temporarily strong gusty winds and rough seas can be expected during thundershowers.**



# Weather Forecast For Fishery and Naval Community

Marine weather forecast for 05.30 p.m. on 16/05/2019 to 05.30 a.m. to 17/05/2019



Marine Division  
Department of Meteorology  
Colombo 07, Sri Lanka  
+94 112686686

For Safer Shipping



# Weather Forecast For Fishery and Naval Community

Sea Area	Wind Speed	Wave Height/	Sea Condition	Weather
<b>Puttalam to Mannar</b>	30-40 kmph; 50-55 kmph at times.	1.25-2.5 m; 3.5-4.0 m at times.	Moderate; Rough at times.	Mainly fair.
<b>Mannar to Kankasanthurai</b>	30-40 kmph; 50-55 kmph at times.	1.25-2.5 m; 3.5-4.0 m at times.	Moderate; Rough at times.	Mainly fair.
<b>Kankasanthurai to Trincomalee</b>	30-40 kmph.	1.5-2.5 m.	Moderate.	Mainly fair.
<b>Trincomalee to Batticaloa</b>	30-40 kmph.	1.5-2.5 m.	Moderate.	Showers or thundershowers are likely at Several places in the evening
<b>Batticaloa to Pottuvil</b>	30-40 kmph; 50-55 kmph at times.	1.25-2.5 m; 3.5-4.0 m at times.	Moderate; Rough at times.	Showers or thundershowers are likely at Several places in the evening
<b>Pottuvil to Hambantota</b>	30-40 kmph; 50-55 kmph at times.	1.25-2.5 m; 3.5-4.0 m at times.	Moderate; Rough at times.	Showers or thundershowers are likely at Several places
<b>Hambantota to Matara</b>	30-40 kmph.	1.5-2.5 m.	Moderate.	Showers or thundershowers are likely at Several places
<b>Matara to Colombo</b>	20-30 kmph.	0.75-1.25 m.	Slight.	Showers or thundershowers are likely at Several places
<b>Colombo to Puttalam</b>	30-40 kmph.	1.5-2.5 m.	Moderate.	Showers or thundershowers are likely at Several places

**\*\*Temporarily strong gusty winds and rough seas can be expected during thundershowers.**

Marine Division  
Department of Meteorology  
Colombo 07, Sri Lanka  
+94 112686686

**For Safer Shipping**

