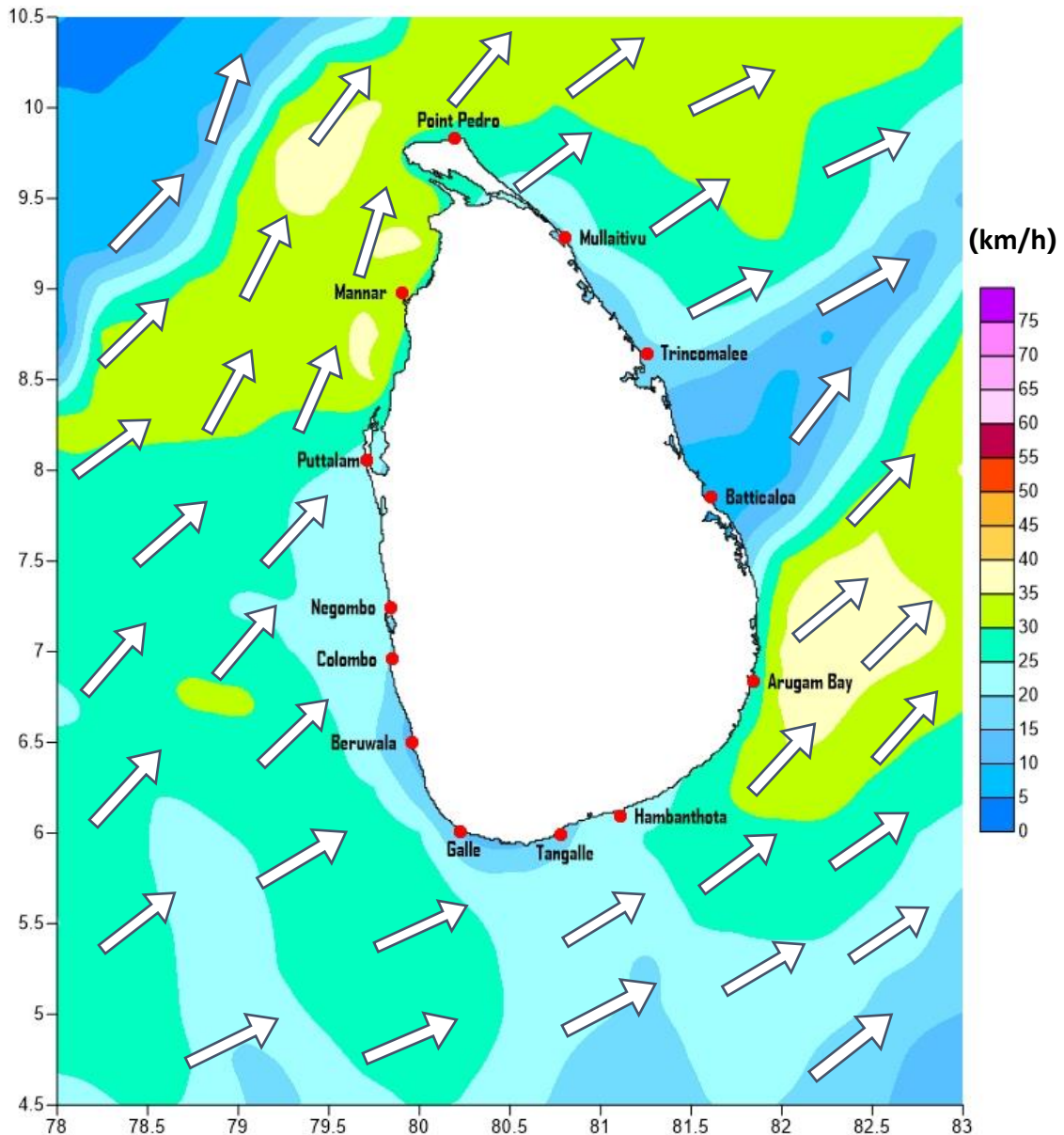


Weather Forecast For Fishery and Naval Community

Marine weather forecast for sea areas around the island

Issued at 04.00 p.m. on 23 May 2019

Marine weather forecast for 05.30 a.m. to 05.30 p.m. on 24/05/2019



Marine Division
Department of Meteorology
Colombo 07, Sri Lanka
+94 112686686

For Safer Shipping



Weather Forecast For Fishery and Naval Community

| Sea Area | Wind Speed | Wave Height | Sea Condition | Weather |
|--------------------------------------|-----------------------------------|---------------------------------|-------------------------------------|--|
| Puttalam to Mannar | 30-40 kmph ; 50 kmph at times. | 1.25-2.5 m ; 3.5m at times. | Moderate; Fairly rough at times. | Mainly fair. |
| Mannar to Kankasanthurai | 30-40 kmph ; 50 kmph at times. | 1.25-2.5 m ; 3.5m at times. | Moderate; Fairly rough at times. | Mainly fair. |
| Kankasanthurai to Trincomalee | 30-40 kmph. | 1.25-2.5 m. | Moderate. | Mainly fair. |
| Trincomalee to Batticaloa | 20-30 kmph. | 0.75-1.25 m. | Slight. | Mainly fair. |
| Batticaloa to Pottuvil | 30-35 kmph ; 50 kmph at times. | 1.25-2.25 m ; 3.5m at times. | Moderate; Rough at times. | Mainly fair. |
| Pottuvil to Hambantota | 30-40 kmph ; 50 kmph at times. | 1.25-2.5 m ; 3.5m at times. | Moderate; Rough at times. | Showers or thundershowers at times; heavy falls at some places |
| Hambantota to Matara | 30-35 kmph. | 1.25-2.25 m. | Moderate. | Showers or thundershowers at times; heavy falls at some places |
| Matara to Colombo | 20-30 kmph. | 0.75-1.25 m. | Slight. | Showers or thundershowers at times; heavy falls at some places |
| Colombo to Puttalam | 30-40 kmph. | 1.25-2.5 m. | Moderate. | Showers or thundershowers at times; heavy falls at some places |

**

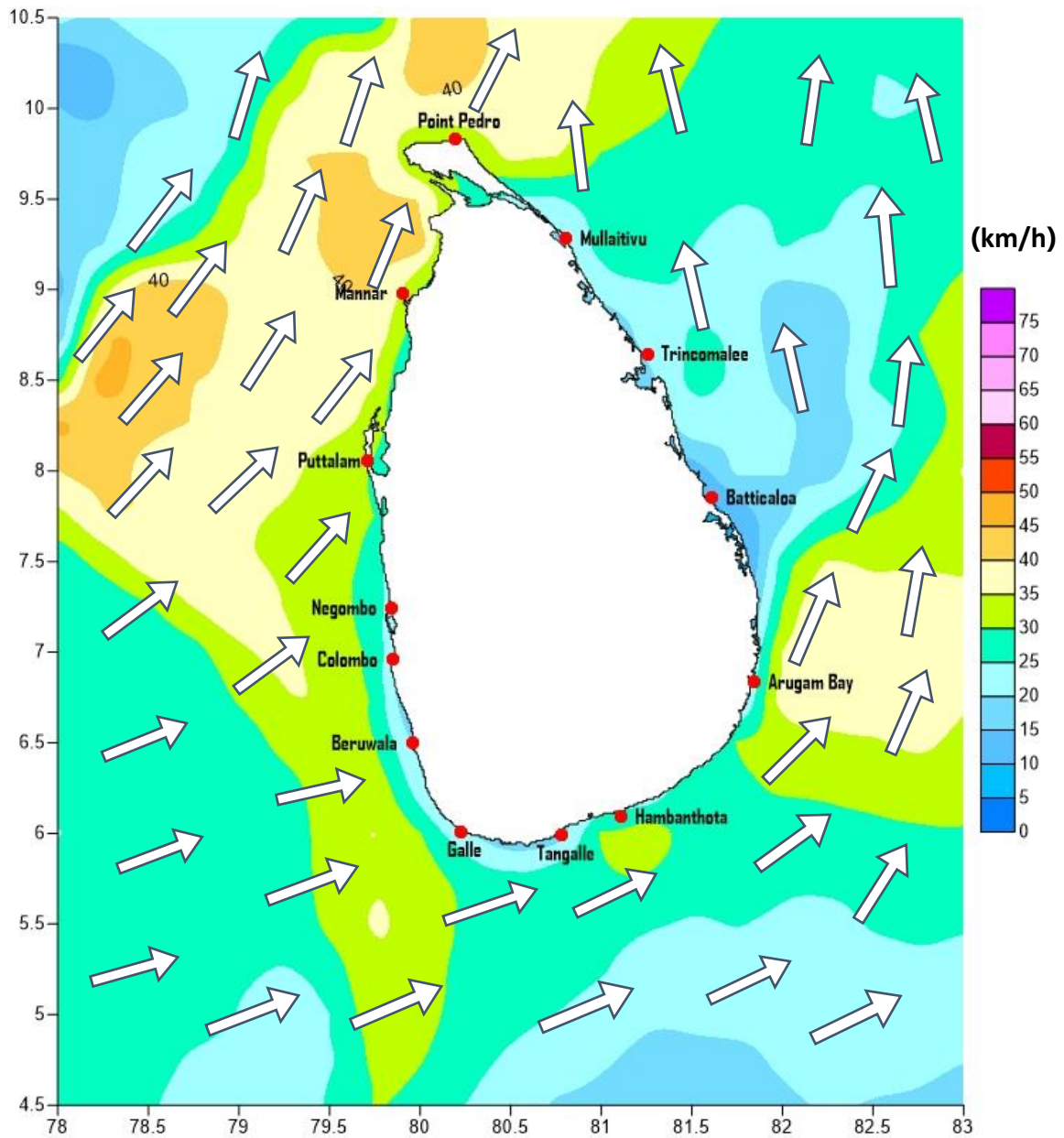
Marine Division
Department of Meteorology
Colombo 07, Sri Lanka
+94 112686686

For Safer Shipping



Weather Forecast For Fishery and Naval Community

Marine weather forecast for 05.30 p.m. on 24/05/2019 to 05.30 a.m. to 25/05/2019



Marine Division
Department of Meteorology
Colombo 07, Sri Lanka
+94 112686686

For Safer Shipping



Weather Forecast For Fishery and Naval Community

| Sea Area | Wind Speed | Wave Height/ | Sea Condition | Weather |
|--------------------------------------|--------------------------------|----------------------------|----------------------------------|--|
| Puttalam to Mannar | 30-40 kmph ; 55 kmph at times. | 1.25-2.5 m; 3.5m at times. | Moderate; Fairly rough at times. | Mainly fair. |
| Mannar to Kankasanthurai | 30-40 kmph ; 55 kmph at times. | 1.25-2.5 m; 3.5m at times. | Moderate; Fairly rough at times. | Mainly fair. |
| Kankasanthurai to Trincomalee | 30-40 kmph. | 1.5-2.5 m. | Moderate. | Mainly fair. |
| Trincomalee to Batticaloa | 30-35 kmph. | 1.25-2.25 m. | Moderate. | Mainly fair. |
| Batticaloa to Pottuvil | 30-40 kmph ; 50 kmph at times. | 1.25-2.5 m; 3.5m at times. | Moderate; Rough at times. | Mainly fair. |
| Pottuvil to Hambantota | 30-40 kmph ; 50 kmph at times. | 1.25-2.5 m; 3.5m at times. | Moderate; Rough at times. | Showers or thundershowers at times; heavy falls at some places |
| Hambantota to Matara | 25-35 kmph; 45 kmph at times. | 1.0-2.25 m; 3.0m at times. | Moderate; Fairly rough at times. | Showers or thundershowers at times; heavy falls at some places |
| Matara to Colombo | 20-30 kmph. | 0.75-1.25 m. | Slight. | Showers or thundershowers at times; heavy falls at some places |
| Colombo to Puttalam | 30-40 kmph. | 1.5-2.5 m. | Moderate. | Showers or thundershowers at times; heavy falls at some places |

**

Marine Division
Department of Meteorology
Colombo 07, Sri Lanka
+94 112686686

For Safer Shipping

