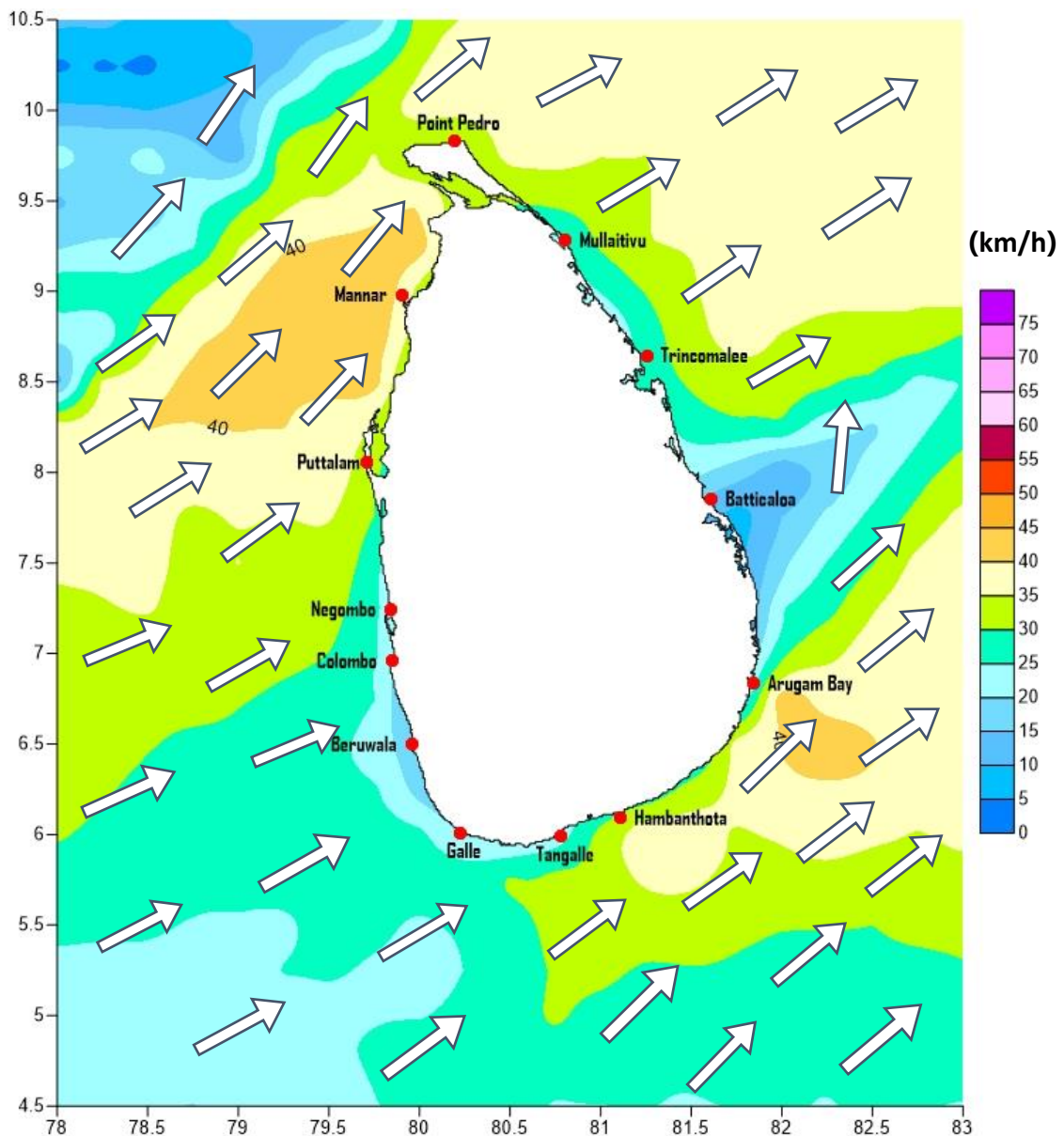


# Weather Forecast For Fishery and Naval Community

Marine weather forecast for sea areas around the island

Issued at 04.00 p.m. on 13 June 2019

Marine weather forecast for 05.30 a.m. to 05.30 p.m. on 14/06/2019



Marine Division  
Department of Meteorology  
Colombo 07, Sri Lanka  
+94 112686686

For Safer Shipping



# Weather Forecast For Fishery and Naval Community

Sea Area	Wind Speed	Wave Height	Sea Condition	Weather
<b>Puttalam to Mannar</b>	30-40 kmph ; 60 kmph at times.	1.25-2.5 m ; 4.5 m at times.	Moderate; Rough at times.	Showers or thunder showers at times
<b>Mannar to Kankasanthurai</b>	30-40 kmph ; 60 kmph at times.	1.25-2.5 m ; 4.5 m at times.	Moderate; Rough at times.	A few showers are likely.
<b>Kankasanthurai to Trincomalee</b>	30-40 kmph ; 60 kmph at times.	1.25-2.5 m ; 4.5 m at times.	Moderate; Rough at times.	Mainly fair.
<b>Trincomalee to Batticaloa</b>	30-40 kmph: 50 kmph at times.	1.25-2.5 m ; 3.5 m at times.	Moderate: Fairly rough at times.	Showers or thunder showers at several places in the evening.
<b>Batticaloa to Pottuvil</b>	30-40 kmph: 50 kmph at times.	1.25-2.5 m ; 3.5 m at times.	Moderate: Fairly rough at times.	Showers or thunder showers at several places in the evening.
<b>Pottuvil to Hambantota</b>	30-40 kmph ; 60 kmph at times.	1.25-2.5 m ; 4.5 m at times.	Moderate; Rough at times.	A few showers are likely.
<b>Hambantota to Matara</b>	30-40 kmph ; 60 kmph at times.	1.25-2.5 m ; 4.5 m at times.	Moderate; Rough at times.	Showers or thunder showers at times
<b>Matara to Colombo</b>	30-40 kmph: 50 kmph at times.	1.25-2.5 m ; 3.5 m at times.	Moderate: Fairly rough at times.	Showers or thunder showers at times
<b>Colombo to Puttalam</b>	30-40 kmph: 50 kmph at times.	1.25-2.5 m ; 3.5 m at times.	Moderate: Fairly rough at times.	Showers or thunder showers at times

\*\*

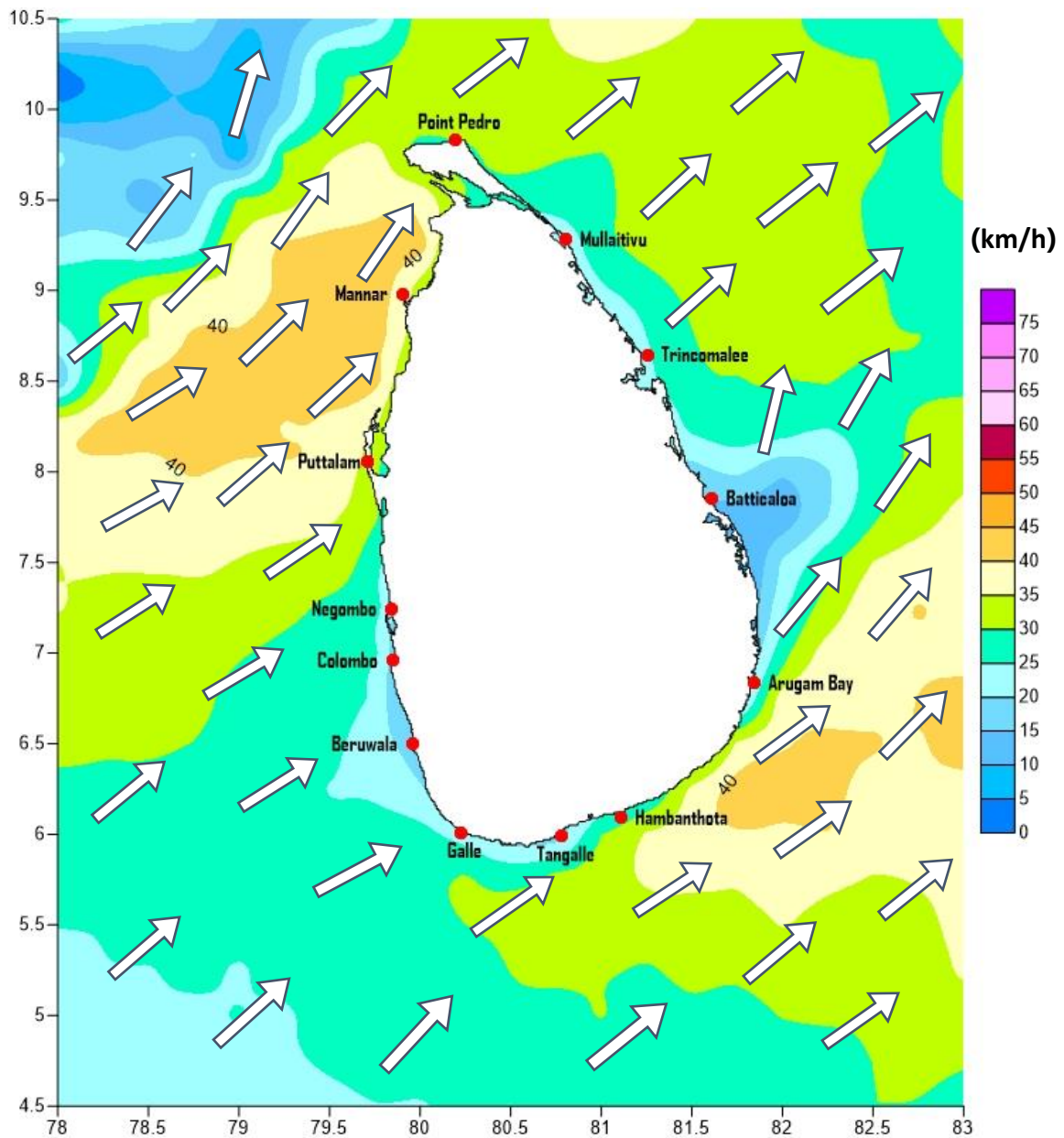
Marine Division  
Department of Meteorology  
Colombo 07, Sri Lanka  
+94 112686686

**For Safer Shipping**



# Weather Forecast For Fishery and Naval Community

Marine weather forecast for 05.30 p.m. on 14/06/2019 to 05.30 a.m. to 15/06/2019



Marine Division  
Department of Meteorology  
Colombo 07, Sri Lanka  
+94 112686686

For Safer Shipping



# Weather Forecast For Fishery and Naval Community

Sea Area	Wind Speed	Wave Height/	Sea Condition	Weather
<b>Puttalam to Mannar</b>	30-40 kmph ; 60 kmph at times.	1.25-2.5 m; 4.5 m at times.	Moderate; Rough at times.	Showers or thunder showers at times
<b>Mannar to Kankasanthurai</b>	30-40 kmph ; 60 kmph at times.	1.25-2.5 m; 4.5 m at times.	Moderate; Rough at times.	A few showers are likely.
<b>Kankasanthurai to Trincomalee</b>	30-40 kmph ; 60 kmph at times.	1.25-2.5 m; 4.5 m at times.	Moderate; Rough at times.	Mainly fair.
<b>Trincomalee to Batticaloa</b>	30-40 kmph: 50 kmph at times.	1.25-2.5 m; 3.5 m at times.	Moderate: Fairly rough at times.	Showers or thunder showers at several places in the night.
<b>Batticaloa to Pottuvil</b>	30-40 kmph: 50 kmph at times.	1.25-2.5 m; 3.5 m at times.	Moderate: Fairly rough at times.	Showers or thunder showers at several places in the night.
<b>Pottuvil to Hambantota</b>	30-40 kmph ; 60 kmph at times.	1.25-2.5 m; 4.5 m at times.	Moderate; Rough at times.	A few showers are likely.
<b>Hambantota to Matara</b>	30-40 kmph ; 60 kmph at times.	1.25-2.5 m; 4.5 m at times.	Moderate; Rough at times.	Showers or thunder showers at times
<b>Matara to Colombo</b>	30-40 kmph: 50 kmph at times.	1.25-2.5 m; 3.5 m at times.	Moderate: Fairly rough at times.	Showers or thunder showers at times
<b>Colombo to Puttalam</b>	30-40 kmph: 50 kmph at times.	1.25-2.5 m; 3.5 m at times.	Moderate: Fairly rough at times.	Showers or thunder showers at times

\*\*

Marine Division  
Department of Meteorology  
Colombo 07, Sri Lanka  
+94 112686686

**For Safer Shipping**

