



කාලගුණ විද්‍යා දෙපාර්තමේන්තුව
வளிமண்டலவியல் திணைக்களம்
Department of Meteorology

TP : 011 2686686
Fax : 011 2691443
E-mail : metnmc@gmail.com
Web : www.meteo.gov.lk

Bulletin No: 06
COLOR: Amber

WW/T/19/04/15/06

Severe Thunderstorm and Heavy Rainfall Advisory

Issued by the natural hazards early warning center

At 04.00 p.m. 15 April 2019 for the period until 04.00 p.m. 15 April 2019

For Central, Sabaragamuwa, Southern, Western and Uva provinces

PLEASE BE AWARE:

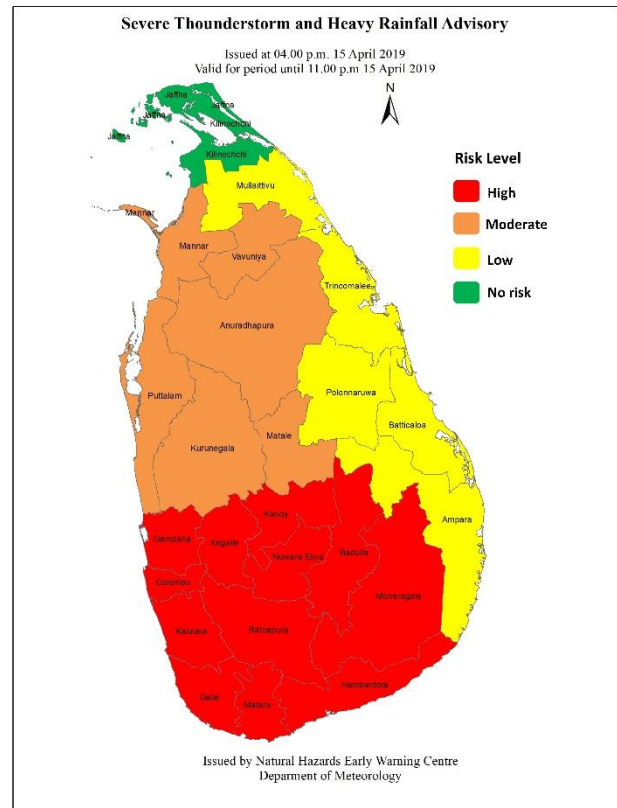
Showers accompanied by severe lightning and thunder are likely to occur in Central, Sabaragamuwa, Southern, Western and Uva provinces.

Temporarily strong gusty winds up to 70-80 kmph are also possible during thundershowers.

ACTION REQUIRED:

The Department of Meteorology advises that people should:

- Seek shelter, preferably indoors and never under trees.
- Avoid open areas such as paddy fields, tea plantations and open water bodies during thunderstorms.
- Avoid using wired telephones and connected electric appliances during thunderstorms.
- Avoid using open vehicles, such as bicycles, tractors and boats etc.
- Beware of fallen trees and power lines.
- For emergency assistance contact the local disaster management authorities.



Spatial rainfall distribution: Isolated: <25%, A few: 26-50%, Many: 51-75%, Most: 76-100%
Rainfall amount (mm): Fairly Heavy rain: 50 -100, Heavy rain: 100 – 150, Very heavy rain: 150 or more.