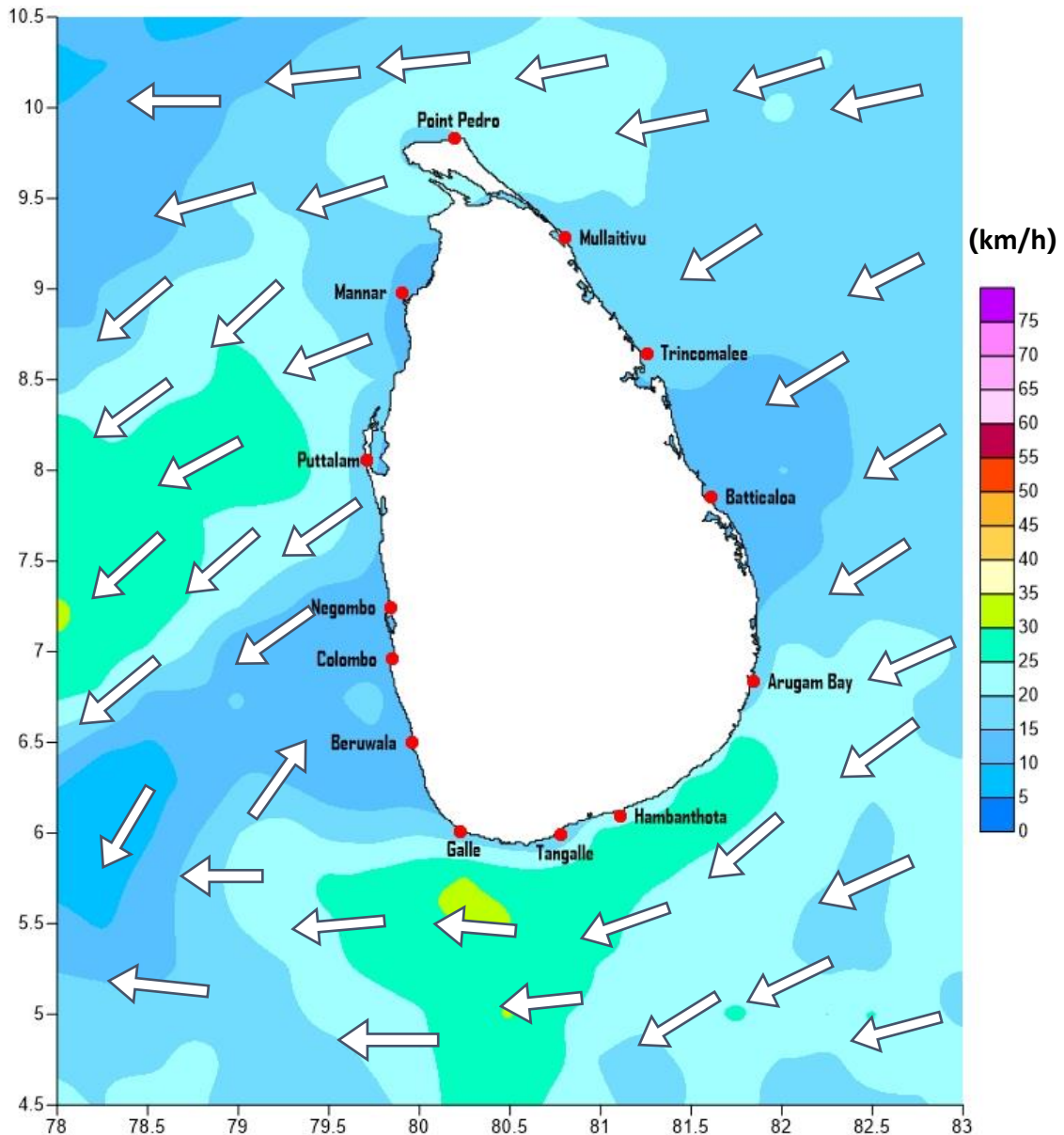


Weather Forecast For Fishery and Naval Community

Marine weather forecast for sea areas around the island
Issued at 04.00 p.m. on 15 March 2019

Marine weather forecast for 05.30 a.m. to 05.30 p.m. on 16/03/2019



Marine Division
Department of Meteorology
Colombo 07, Sri Lanka
+94 112686686

For Safer Shipping



Weather Forecast For Fishery and Naval Community

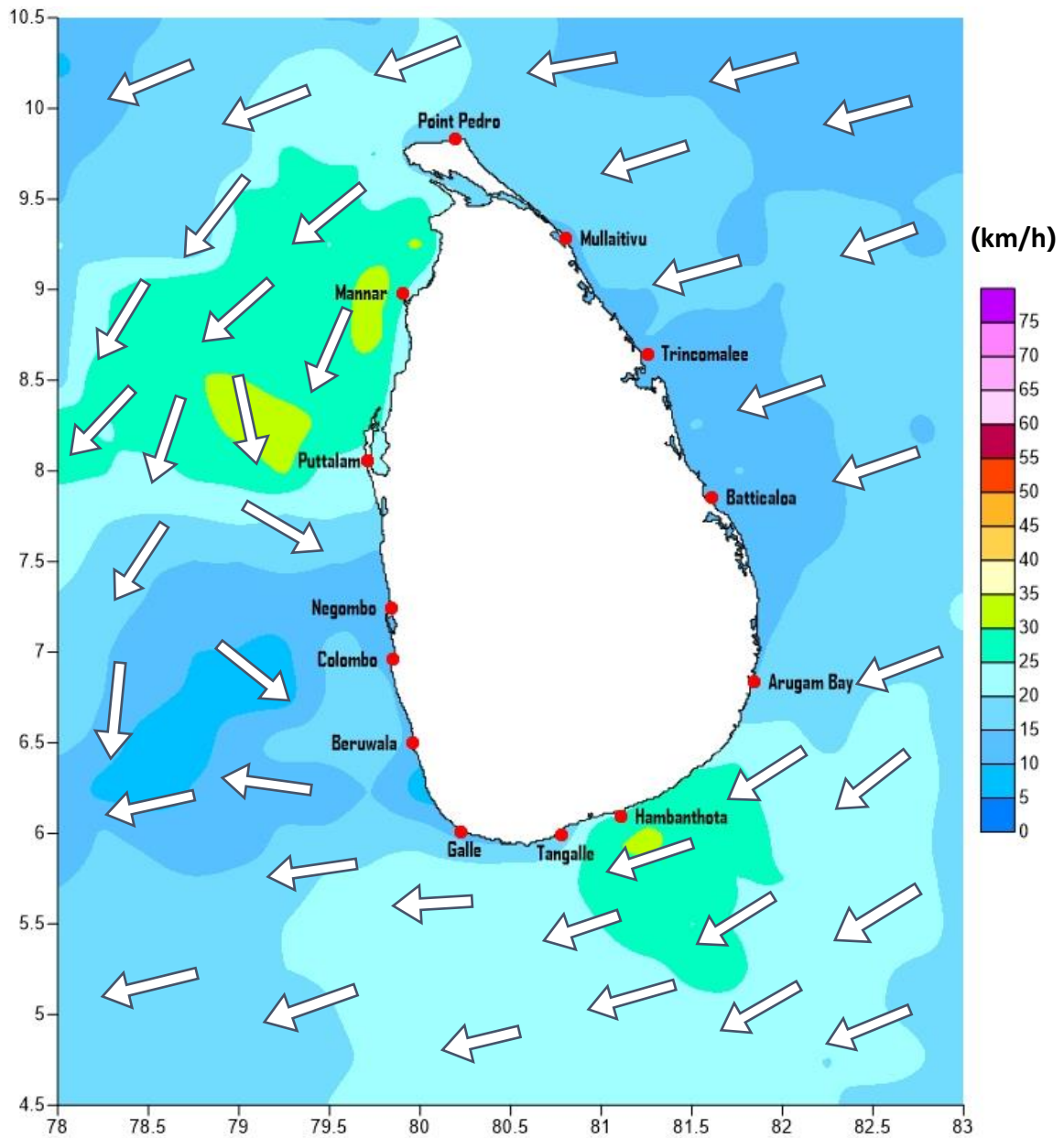
Sea Area	Wind Speed	Wave Height	Sea Condition	Weather
Puttalam to Mannar	20-30 kmph; 40 kmph at times	1.0-2.25 m; 2.5m at times.	Slight to moderate	Mainly fair.
Mannar to Kankasanthurai	20-30 kmph.	0.75-1.25 m.	Slight.	Mainly fair.
Kankasanthurai to Trincomalee	20-30 kmph.	0.75-1.25 m.	Slight.	Mainly fair.
Trincomalee to Batticaloa	15-25 kmph.	0.5-1.0 m.	Slight.	Mainly fair.
Batticaloa to Pottuvil	15-25 kmph.	0.5-1.0 m.	Slight.	A few showers are likely.
Pottuvil to Hambantota	20-30 kmph.	0.75-1.25 m.	Slight.	A few showers are likely.
Hambantota to Galle	20-30 kmph; 40 kmph at times	1.0-2.25 m; 2.5m at times.	Slight to moderate	Showers or thundershowers may occur at a few places in the evening.
Galle to Colombo	15-25 kmph.	0.5-1.0 m.	Slight.	Mainly fair.
Colombo to Puttalam	20-30 kmph.	0.75-1.25 m.	Slight.	Mainly fair.

****Temporarily strong gusty winds and rough seas can be expected during thundershowers.**



Weather Forecast For Fishery and Naval Community

Marine weather forecast for 05.30 p.m. on 16/03/2019 to 05.30 a.m. to 17/03/2019



Marine Division
Department of Meteorology
Colombo 07, Sri Lanka
+94 112686686

For Safer Shipping



Weather Forecast For Fishery and Naval Community

Sea Area	Wind Speed	Wave Height/	Sea Condition	Weather
Puttalam to Mannar	20-30 kmph; 40-45 kmph at times	1.0-2.25 m; 3.0m at times.	Slight to moderate; Fairly rough at times.	Mainly fair.
Mannar to Kankasanthurai	20-30 kmph; 40-45 kmph at times	1.0-2.25 m; 3.0m at times.	Slight to moderate; Fairly rough at times.	Mainly fair.
Kankasanthurai to Trincomalee	20-30 kmph.	0.75-1.25 m.	Slight.	Mainly fair.
Trincomalee to Batticaloa	15-25 kmph.	0.5-1.0 m.	Slight.	Mainly fair.
Batticaloa to Pottuvil	15-25 kmph.	0.5-1.0 m.	Slight.	A few showers are likely.
Pottuvil to Hambantota	20-30 kmph; 40 kmph at times	1.0-2.25 m; 2.5m at times.	Slight to moderate	A few showers are likely.
Hambantota to Galle	20-30 kmph; 40 kmph at times	1.0-2.25 m; 2.5m at times.	Slight to moderate	Showers or thundershowers may occur at a few places
Galle to Colombo	15-25 kmph.	0.5-1.0 m.	Slight.	Showers or thundershowers may occur at a few places in the evening.
Colombo to Puttalam	20-30 kmph; 40 kmph at times	1.0-2.25 m; 2.5m at times.	Slight to moderate	Mainly fair.

****Temporarily strong gusty winds and rough seas can be expected during thundershowers.**

Marine Division
Department of Meteorology
Colombo 07, Sri Lanka
+94 112686686

For Safer Shipping

