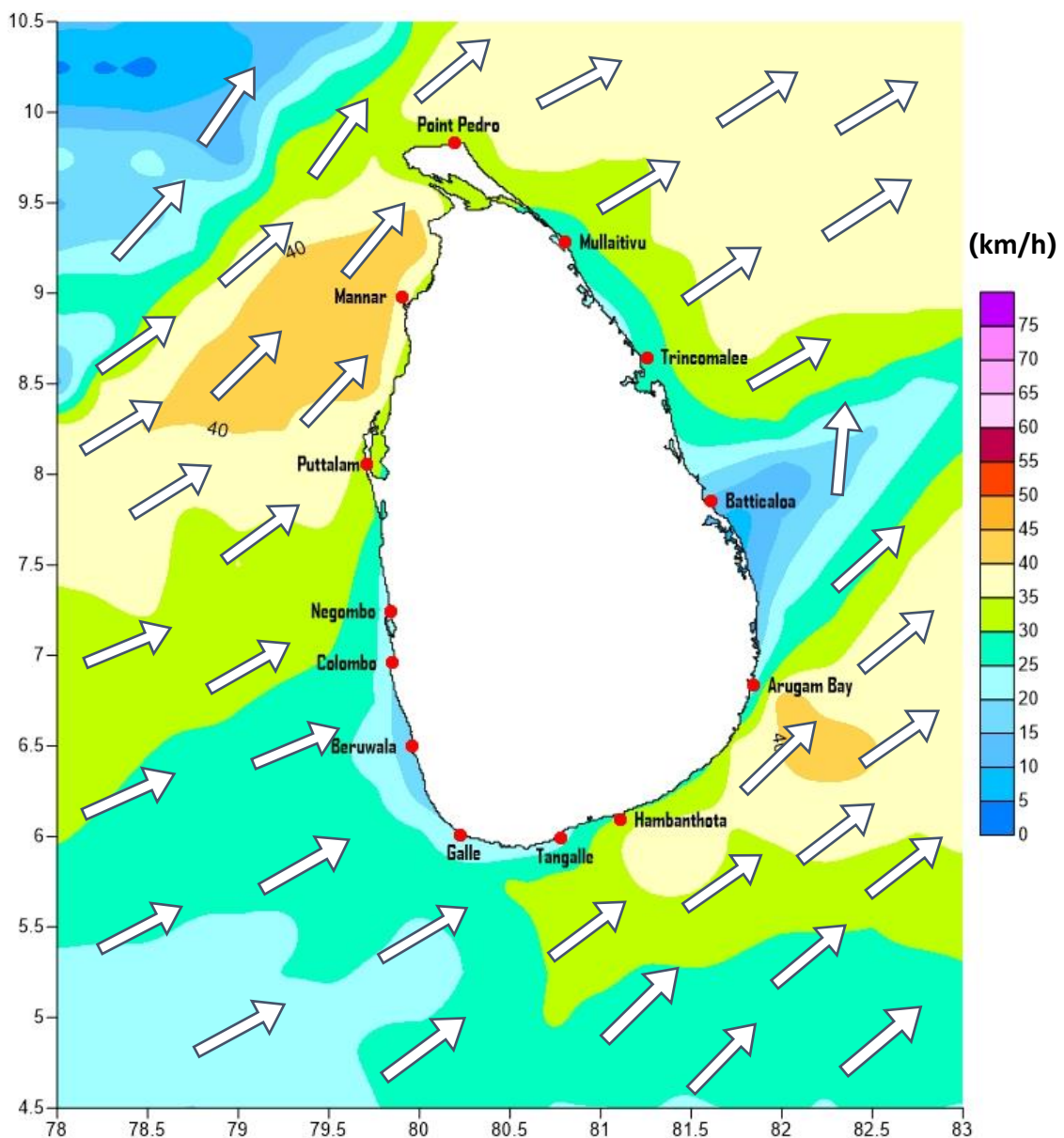


Weather Forecast For Fishery and Naval Community

Marine weather forecast for sea areas around the island

Issued at 07.00 p.m. on 12 June 2019

Marine weather forecast for 05.30 a.m. to 05.30 p.m. on 13/06/2019



Marine Division
Department of Meteorology
Colombo 07, Sri Lanka
+94 112686686

For Safer Shipping



Weather Forecast For Fishery and Naval Community

Sea Area	Wind Speed	Wave Height	Sea Condition	Weather
Puttalam to Mannar	35-45 kmph ; 60 kmph at times.	2.25-3.0 m ; 4.5 m at times.	Fairly rough; Rough at times.	A few showers are likely.
Mannar to Kankasanthurai	35-45 kmph ; 60 kmph at times.	2.25-3.0 m ; 4.5 m at times.	Fairly rough; Rough at times.	Mainly fair.
Kankasanthurai to Trincomalee	30-40 kmph ; 60 kmph at times.	1.25-2.5 m ; 4.5 m at times.	Moderate; Rough at times.	Mainly fair.
Trincomalee to Batticaloa	30-40 kmph; 50 kmph at times.	1.25-2.5 m ; 3.5 m at times.	Moderate: Fairly rough at times.	Mainly fair.
Batticaloa to Pottuvil	30-40 kmph; 50 kmph at times.	1.25-2.5 m ; 3.5 m at times.	Moderate: Fairly rough at times.	Mainly fair.
Pottuvil to Hambantota	30-40 kmph ; 60 kmph at times.	1.25-2.5 m ; 4.5 m at times.	Moderate; Rough at times.	A few showers are likely.
Hambantota to Matara	30-40 kmph ; 60 kmph at times.	1.25-2.5 m ; 4.5 m at times.	Moderate; Rough at times.	Several spells of showers.
Matara to Colombo	30-40 kmph; 50 kmph at times.	1.25-2.5 m ; 3.5 m at times.	Moderate: Fairly rough at times.	Several spells of showers.
Colombo to Puttalam	30-40 kmph; 50 kmph at times.	1.25-2.5 m ; 3.5 m at times.	Moderate: Fairly rough at times.	Several spells of showers.

**

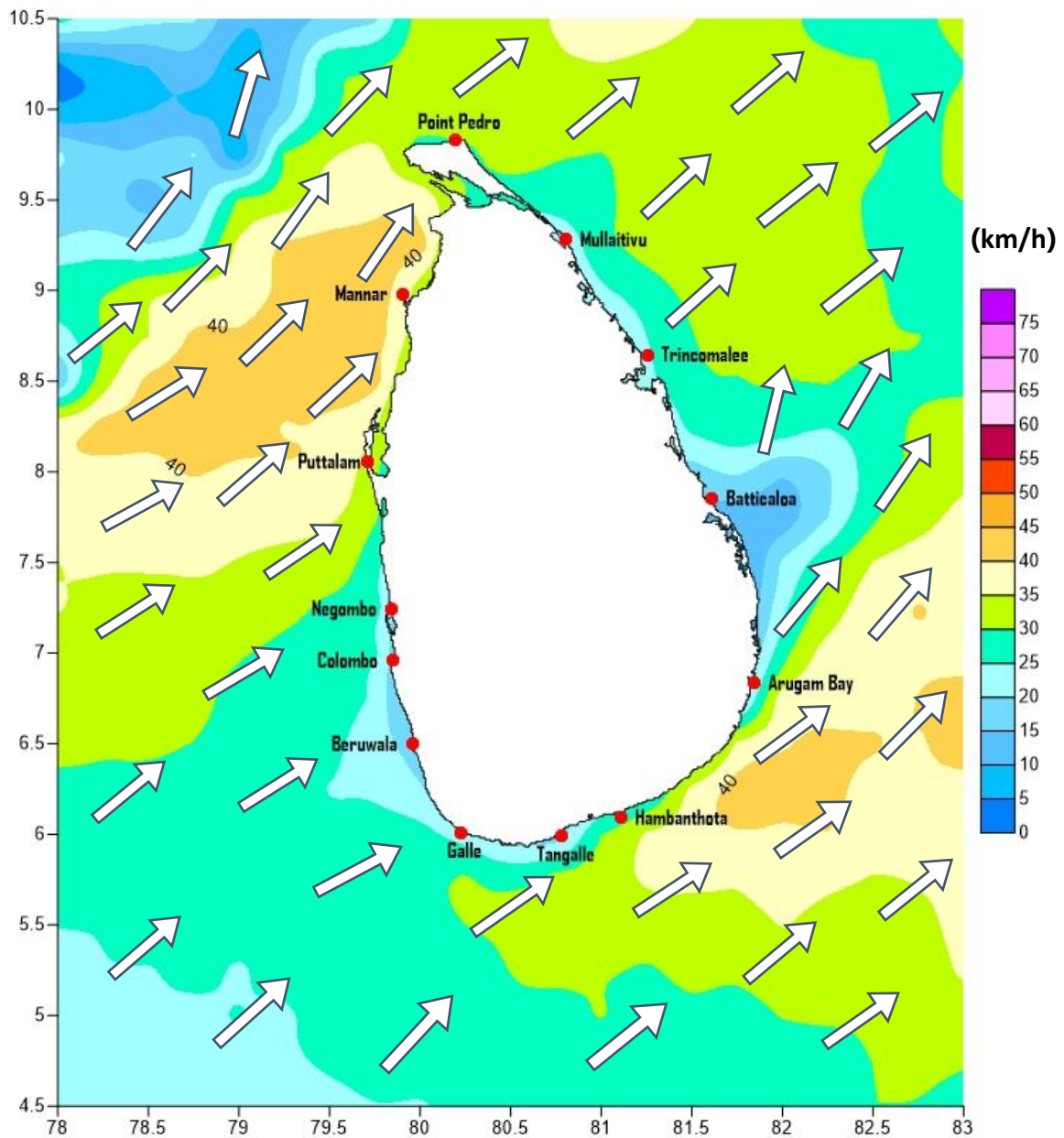
Marine Division
Department of Meteorology
Colombo 07, Sri Lanka
+94 112686686

For Safer Shipping



Weather Forecast For Fishery and Naval Community

Marine weather forecast for 05.30 p.m. on 13/06/2019 to 05.30 a.m. to 14/06/2019



Marine Division
Department of Meteorology
Colombo 07, Sri Lanka
+94 112686686

For Safer Shipping



Weather Forecast For Fishery and Naval Community

Sea Area	Wind Speed	Wave Height/	Sea Condition	Weather
Puttalam to Mannar	35-45 kmph ; 60 kmph at times.	2.25-3.0 m; 4.5 m at times.	Fairly rough; Rough at times.	A few showers are likely.
Mannar to Kankasanthurai	35-45 kmph ; 60 kmph at times.	2.25-3.0 m; 4.5 m at times.	Fairly rough; Rough at times.	Mainly fair.
Kankasanthurai to Trincomalee	30-40 kmph ; 60 kmph at times.	1.25-2.5 m; 4.5 m at times.	Moderate; Rough at times.	Mainly fair.
Trincomalee to Batticaloa	30-40 kmph: 50 kmph at times.	1.25-2.5 m; 3.5 m at times.	Moderate: Fairly rough at times.	Mainly fair.
Batticaloa to Pottuvil	30-40 kmph: 50 kmph at times.	1.25-2.5 m; 3.5 m at times.	Moderate: Fairly rough at times.	Mainly fair.
Pottuvil to Hambantota	30-40 kmph ; 60 kmph at times.	1.25-2.5 m; 4.5 m at times.	Moderate; Rough at times.	A few showers are likely.
Hambantota to Matara	30-40 kmph ; 60 kmph at times.	1.25-2.5 m; 4.5 m at times.	Moderate; Rough at times.	Several spells of showers.
Matara to Colombo	30-40 kmph: 50 kmph at times.	1.25-2.5 m; 3.5 m at times.	Moderate: Fairly rough at times.	Several spells of showers.
Colombo to Puttalam	30-40 kmph: 50 kmph at times.	1.25-2.5 m; 3.5 m at times.	Moderate: Fairly rough at times.	Several spells of showers.

**

Marine Division
Department of Meteorology
Colombo 07, Sri Lanka
+94 112686686

For Safer Shipping

