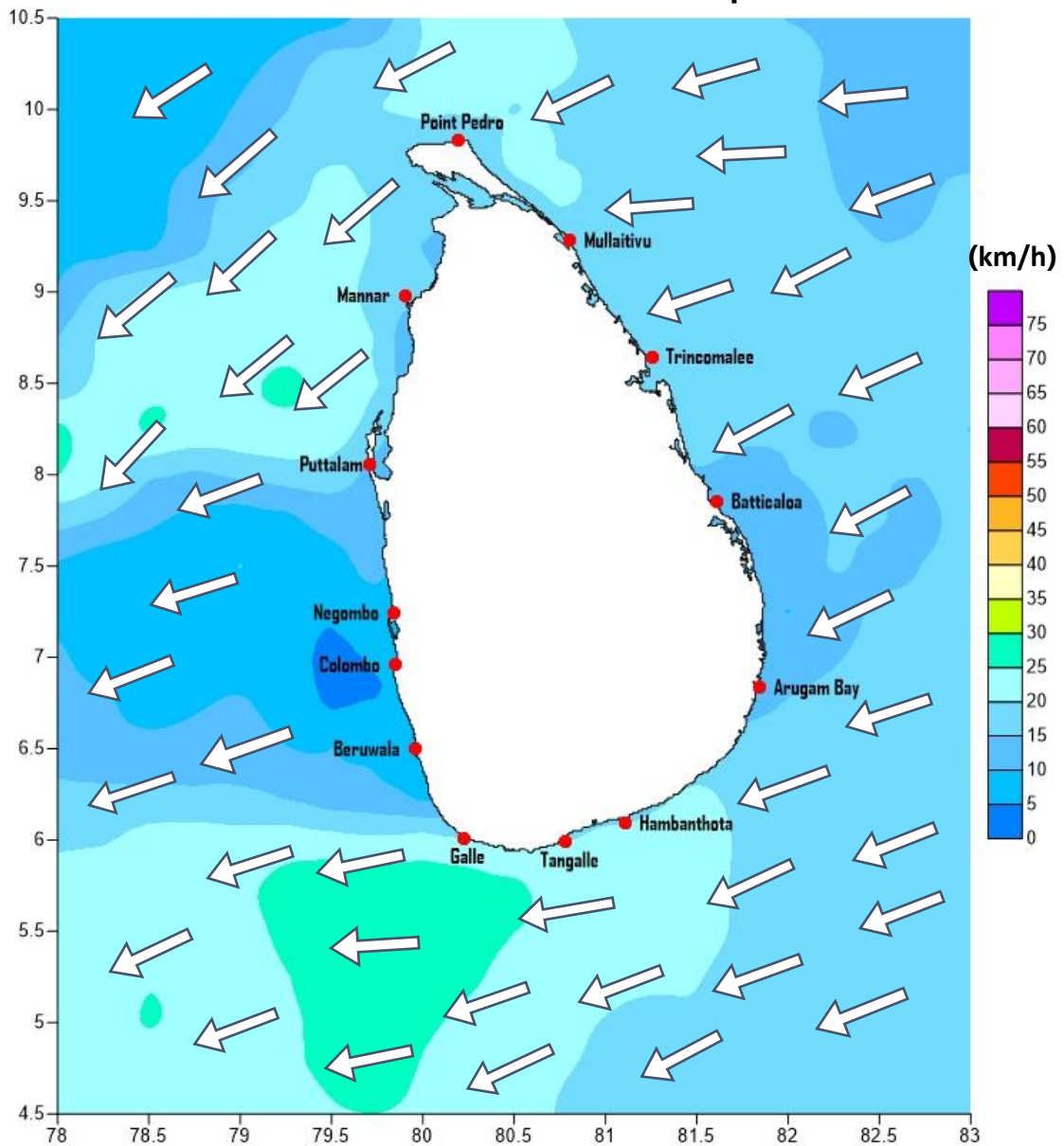


Weather Forecast For Fishery and Naval Community

Marine weather forecast for sea areas around the island

Issued at 04.00 p.m. on 24 March 2020

Marine weather forecast for 05.30 a.m. to 05.30 p.m. on 25/03/2020



Marine Division
Department of Meteorology
Colombo 07, Sri Lanka
+94 112686686

For Safer Shipping



Weather Forecast For Fishery and Naval Community

Sea Area	Wind Speed	Wave Height	Sea Condition	Weather
Puttalam to Mannar	20-30 kmph; 40 kmph at times.	0.75-1.25 m; 2.5 m at times	Slight; moderate at times.	Mainly fair.
Mannar to Kankasanthurai	20-30 kmph.	0.75-1.25 m.	Slight.	Mainly fair.
Kankasanthurai to Trincomalee	20-30 kmph.	0.75-1.25 m.	Slight.	Mainly fair.
Trincomalee to Batticaloa	20-30 kmph.	0.75-1.25 m.	Slight.	Mainly fair.
Batticaloa to Pottuvil	20-30 kmph.	0.75-1.25 m.	Slight.	Mainly fair.
Pottuvil to Hambantota	20-30 kmph.	0.75-1.25 m.	Slight.	Mainly fair.
Hambantota to Galle	20-30 kmph; 40 kmph at times.	0.75-1.25 m; 2.5 m at times	Slight; moderate at times.	Mainly fair.
Galle to Colombo	20-30 kmph.	0.75-1.25 m.	Slight.	Mainly fair.
Colombo to Puttalam	20-30 kmph.	0.75-1.25 m.	Slight.	Mainly fair.

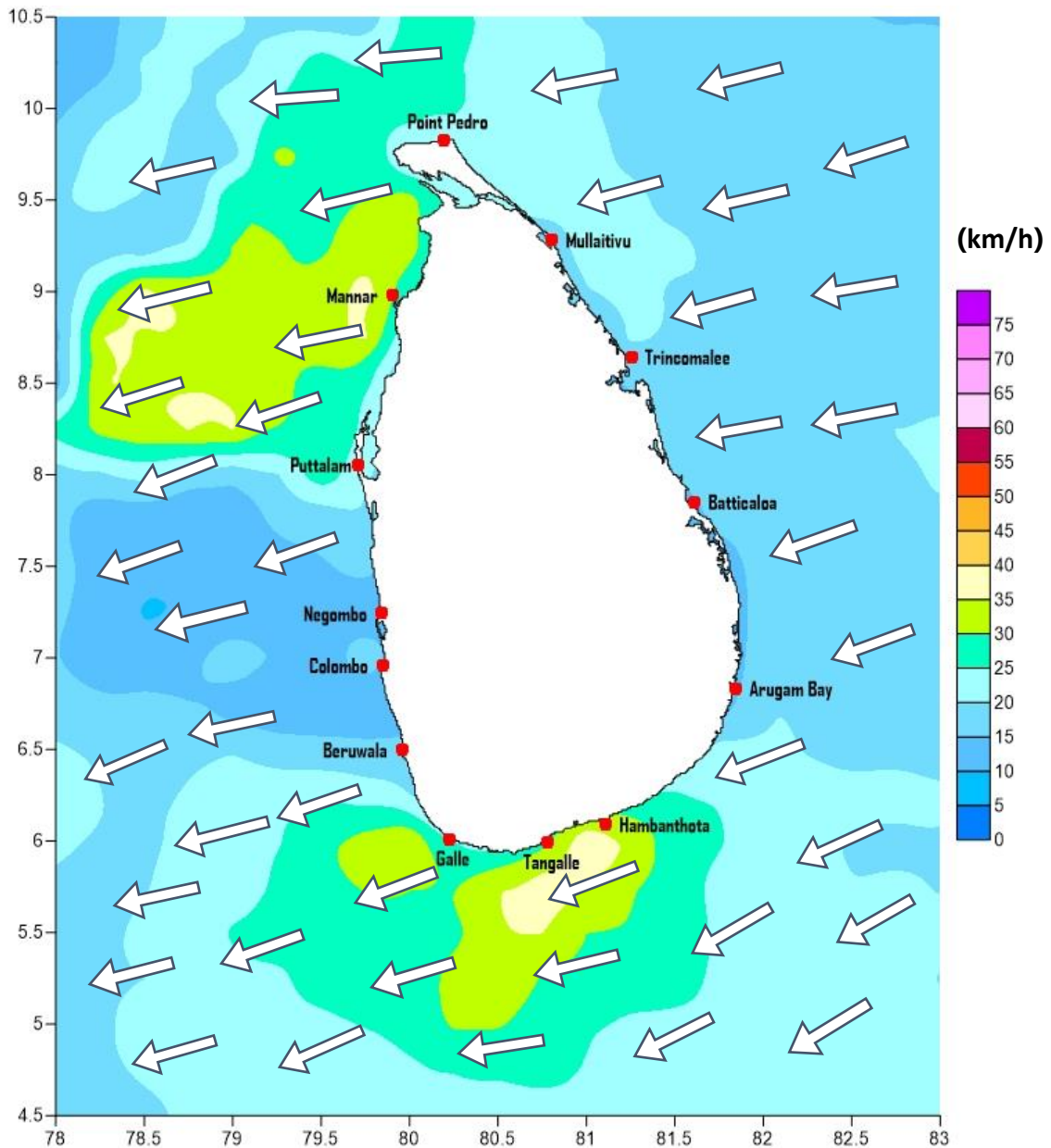
Marine Division
Department of Meteorology
Colombo 07, Sri Lanka
+94 112686686

For Safer Shipping



Weather Forecast For Fishery and Naval Community

Marine weather forecast for 05.30 p.m. on 25/03/2020 to 05.30 a.m. on 26/03/2020



Marine Division
Department of Meteorology
Colombo 07, Sri Lanka
+94 112686686

For Safer Shipping



Weather Forecast For Fishery and Naval Community

Sea Area	Wind Speed	Wave Height	Sea Condition	Weather
Puttalam to Mannar	25-35 kmph; 40-45 kmph at times.	1.0-2.25 m; 2.5-3.0 m at times	Moderate: fairly rough at times.	Mainly fair.
Mannar to Kankasanthurai	25-35 kmph; 40-45 kmph at times.	1.0-2.25 m; 2.5-3.0 m at times	Moderate: fairly rough at times.	Mainly fair.
Kankasanthurai to Trincomalee	20-30 kmph.	0.75-1.25 m.	Slight.	Mainly fair.
Trincomalee to Batticaloa	20-30 kmph.	0.75-1.25 m.	Slight.	Mainly fair.
Batticaloa to Pottuvil	20-30 kmph.	0.75-1.25 m.	Slight.	Mainly fair.
Pottuvil to Hambantota	20-30 kmph; 40 kmph at times.	0.75-1.25 m; 2.5 m at times	Slight; moderate at times.	Mainly fair.
Hambantota to Galle	25-35 kmph; 40-45 kmph at times.	1.0-2.25 m; 2.5-3.0 m at times	Moderate: fairly rough at times.	Mainly fair.
Galle to Colombo	20-30 kmph.	0.75-1.25 m.	Slight.	Mainly fair.
Colombo to Puttalam	20-30 kmph.	0.75-1.25 m.	Slight.	Mainly fair.

*

Marine Division
Department of Meteorology
Colombo 07, Sri Lanka
+94 112686686

For Safer Shipping

