

Weather Forecast For Fishery and Naval Community

Marine weather forecast for sea areas around the island

Issued at 04.30 p.m. on 30 November 2020

Bulletin No: **04.**

WW/TC/20/11/30/04

COLOR: **Red**

Warning for the depression in the south-east Bay of Bengal sea area

Issued by the Natural Hazards Early Warning Centre

Issued at 01.00 p.m. 30th November 2020

For the sea areas around the island

PLEASE BE AWARE!

The low pressure area in the south-east Bay of Bengal has concentrated into a depression lay centred 750 km southeast to Trincomalee. The system is very likely to intensified into a deep depression during next 12 hours and likely to intensify further into a cyclonic storm during the subsequent 12 hours. This system is very likely to move west-northwestwards and cross eastern coast of Sri Lanka between Batticaloa and Mullativ around Wednesday (02) evening.



Forecast position and approximate distance to the center location from Trincomalee		
Date/Time (SLST) (Hrs)	Position (Lat/Lon)	Distance to Trincomalee (km)
2020.11.30/0530	7.5N/88.0E	750
2020.11.30/1730	7.7N/87.0E	640
2020.12.01/0530	7.9N/86.1E	539
2020.12.01/1730	8.1N/84.8E	394
2020.12.02/0530	8.3N/83.1E	206
2020.12.02/1730	8.5N/81.5	30

Source: RSMC India

WARNINGS:

For Sea Area

- Under the influence of aforementioned system, from 01st December to 03rd December;
- Intermittent showers or thundershowers and sudden roughness, associated with sudden increase of wind speed up to **(80-100)kmph** are expected over Eastern and Northern deep and shallow sea areas.
 - The shore off the coast extending from Kankasanturai to Pottuvil via Trincomalee and Batticaloa may experience surges due to the effect of swell waves, having (2.0-3.0) m height.

Marine Division
Department of Meteorology
Colombo 07, Sri Lanka
+94 112686686

For Safer Shipping



Weather Forecast For Fishery and Naval Community

→ From 02nd December to 03rd December;

- The sea area around the island will be very rough to high as the wind speed can be increased up to **(80-100) kmph** at times.
- The shore off the coast extending from Batticaloa to Mullativ may experience surges due to the effect of swell waves, having (2.0-3.0) m height.

ACTION SUGGESTED:

For the Sea area:

- **Naval and fishing communities are warned not to venture to the sea areas extending from Kankasanturai to Hambantota via Trincomalee and Batticaloa from tomorrow (01st December).**
- **Those who are out at aforementioned sea regions are advised to return to coasts or moved safer areas by 01st December.**
- **Naval and fishing communities are warned not to venture to the sea areas around the island from 02nd December until further notice.**
- **Naval and fishing communities in northern and eastern parts of the island are requested to be vigilant in this regards.**

The next bulletin will be issued at 08.00 a.m. at 01st December 2020.

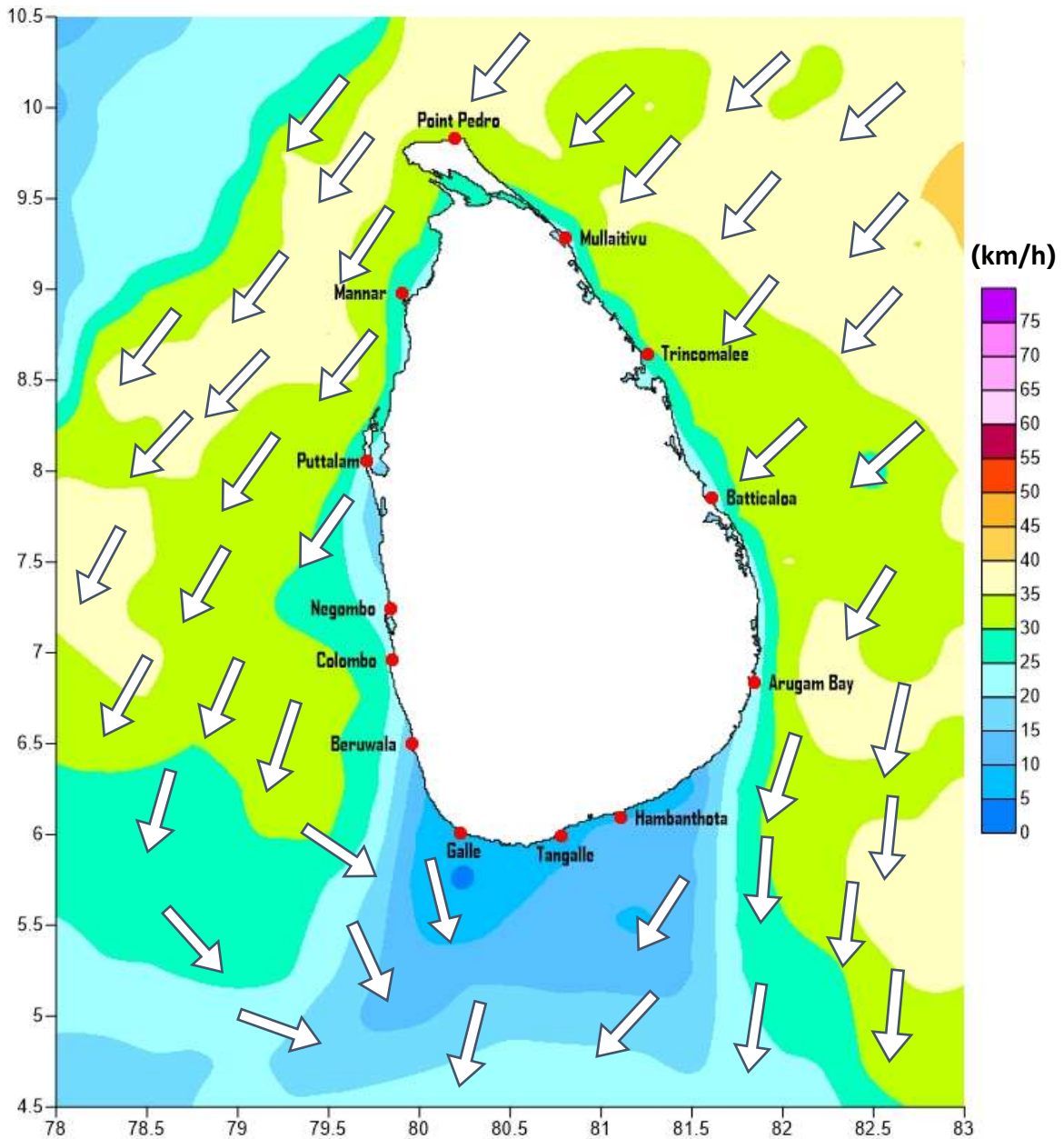
Marine Division
Department of Meteorology
Colombo 07, Sri Lanka
+94 112686686

For Safer Shipping



Weather Forecast For Fishery and Naval Community

Marine weather forecast for 05.30 a.m. to 05.30 p.m. on 01/12/2020



Marine Division
Department of Meteorology
Colombo 07, Sri Lanka
+94 112686686

For Safer Shipping



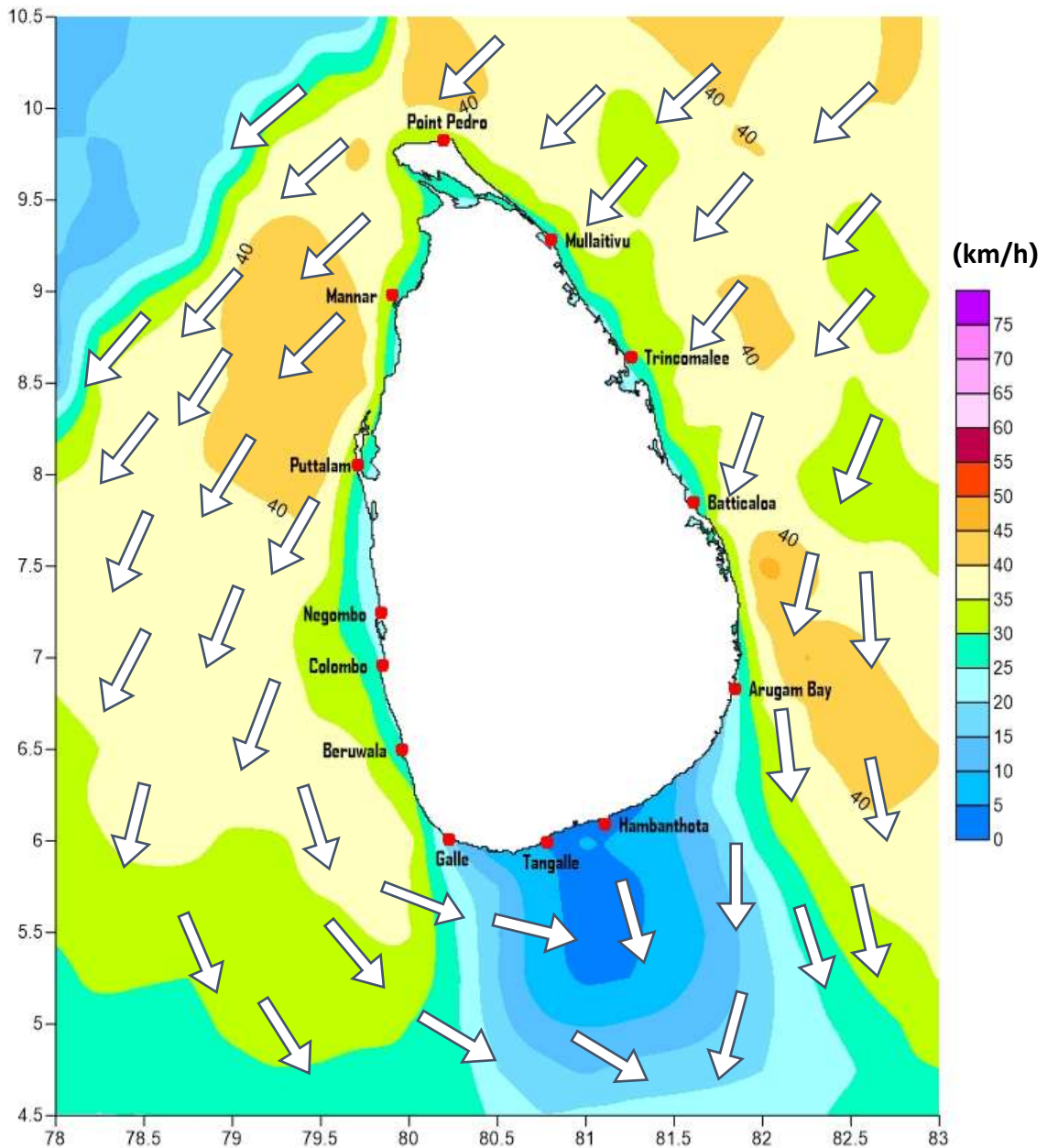
Weather Forecast For Fishery and Naval Community

Sea Area	Wind Speed	Wave Height	Sea Condition	Weather
Puttalam to Mannar	30-40 kmph; 50-55 kmph at times.	1.25-2.5 m; 4.0m at times.	Moderate; Rough at times.	A few showers are likely.
Mannar to Kankasanthurai	30-40 kmph; 50-55 kmph at times.	1.25-2.5 m; 4.0m at times.	Moderate; Rough at times.	A few showers.
Kankasanthurai to Trincomalee	30-40 kmph; 50-55 kmph at times.	1.25-2.5 m; 4.0m at times.	Moderate; Rough at times.	Showers or thundershowers may occur at several places in deep sea.
Trincomalee to Batticaloa	30-40 kmph; 50-55 kmph at times.	1.25-2.5 m; 4.0m at times.	Moderate; Rough at times.	Showers or thundershowers will occur at several places in deep sea.
Batticaloa to Pottuvil	30-40 kmph; 50-55 kmph at times.	1.25-2.5 m; 4.0m at times.	Moderate; Rough at times.	Showers or thundershowers will occur at several places in deep sea.
Pottuvil to Hambantota	25-35 kmph; 45 kmph at times.	1.0-2.25 m; 3.0 m at times.	Slight to moderate; Fairly rough at times.	Showers or thundershowers may occur at several places in deep sea.
Hambantota to Galle	20-30 kmph.	0.75-1.25 m.	Slight.	Mainly fair.
Galle to Colombo	25-35 kmph; 45 kmph at times.	1.0-2.25 m; 3.0 m at times.	Slight to moderate; Fairly rough at times.	Mainly fair.
Colombo to Puttalam	30-40 kmph; 50 kmph at times.	1.25-2.5 m; 3.5m at times.	Moderate; Fairly rough at times.	Mainly fair.



Weather Forecast For Fishery and Naval Community

Marine weather forecast for 05.30 p.m. on 01/12/2020 to 05.30 a.m. on 02/12/2020



Marine Division
Department of Meteorology
Colombo 07, Sri Lanka
+94 112686686

For Safer Shipping



Weather Forecast For Fishery and Naval Community

Sea Area	Wind Speed	Wave Height	Sea Condition	Weather
Puttalam to Mannar	35-45 kmph; 55-60 kmph at times.	2.25-3.0 m; 4.5m at times.	Moderate to fairly rough; Rough at times.	A few showers are likely.
Mannar to Kankasanthurai	35-45 kmph; 55-60 kmph at times.	2.25-3.0 m; 4.5m at times.	Moderate to fairly rough; Rough at times.	A few showers are likely.
Kankasanthurai to Trincomalee	35-45 kmph; 55-60 kmph at times.	2.25-3.0 m; 4.5m at times.	Moderate to fairly rough; Rough at times.	Showers or thundershowers will occur at times.
Trincomalee to Batticaloa	35-45 kmph; 55-60 kmph at times.	2.25-3.0 m; 4.5m at times.	Moderate to fairly rough; Rough at times.	Showers or thundershowers will occur at times.
Batticaloa to Pottuvil	35-45 kmph; 55-60 kmph at times.	2.25-3.0 m; 4.5m at times.	Moderate to fairly rough; Rough at times.	Showers or thundershowers will occur at times.
Pottuvil to Hambantota	30-40 kmph; 50 kmph at times.	1.25-2.5 m; 3.5m at times.	Moderate; Fairly rough at times.	Showers or thundershowers may occur at several places.
Hambantota to Galle	25-35 kmph; 45 kmph at times.	1.0-2.25 m; 3.0 m at times.	Slight to moderate; Fairly rough at times.	Showers or thundershowers are likely at several places in the evening or night.
Galle to Colombo	25-35 kmph.	1.0-2.25 m.	Slight to moderate;	Showers or thundershowers are likely at a few places in the evening or night.
Colombo to Puttalam	25-35 kmph; 45 kmph at times.	1.0-2.25 m; 3.0 m at times.	Slight to moderate; Fairly rough at times.	Showers or thundershowers are likely at a few places in the evening or night.

****Temporarily strong gusty winds (up to 60 -70 kmph) and very rough seas can be expected during Thundershowers.**

Marine Division
Department of Meteorology
Colombo 07, Sri Lanka
+94 112686686

For Safer Shipping

