

# Weather Forecast For Fishery and Naval Community

## Marine weather forecast for sea areas around the island

Issued at 04.30 p.m. on 01 December 2020

Bulletin No: 07.

WW/TC/20/12/01/07

COLOR: **Red**

## **Warning for the deep depression in the south-east Bay of Bengal sea area**

Issued by the Natural Hazards Early Warning Centre

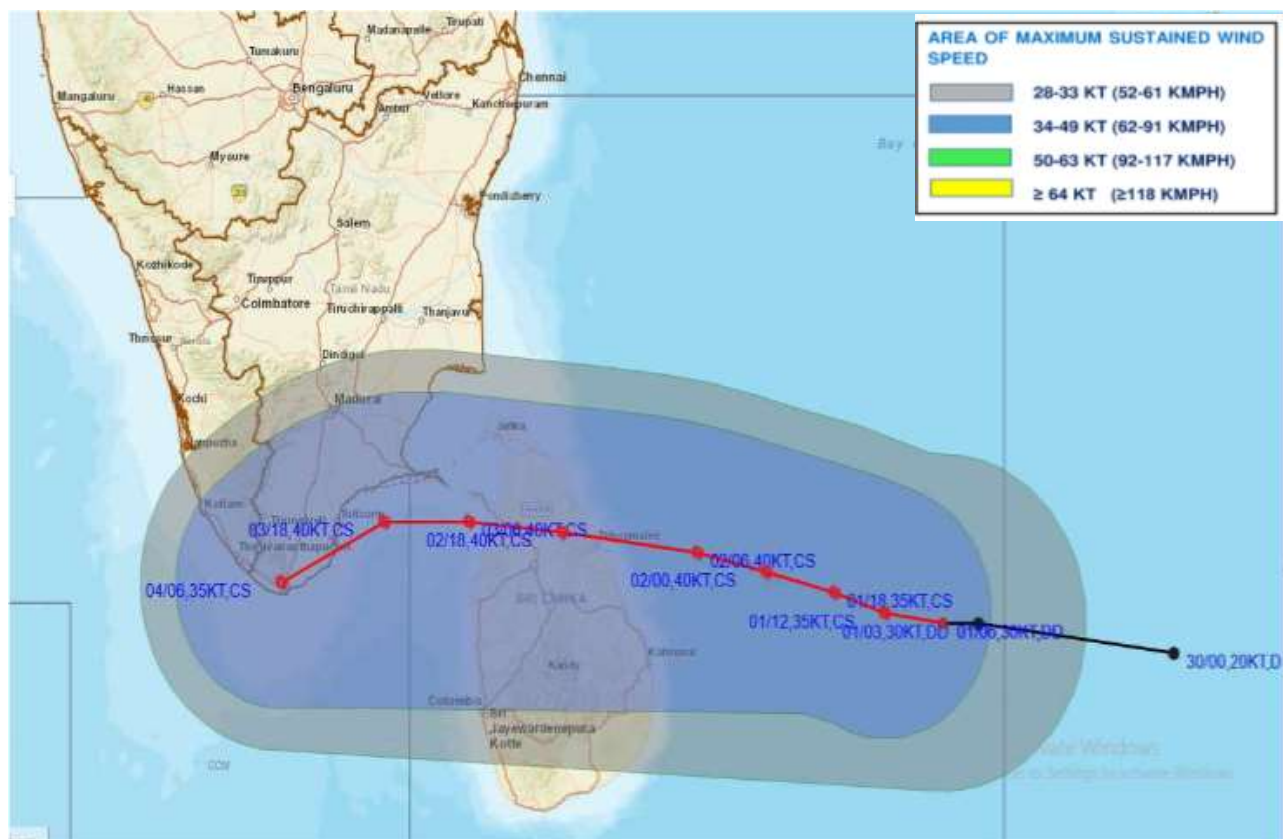
Issued at 04.00 p.m. 01<sup>st</sup> December 2020

### For the sea areas around the island

### **PLEASE BE AWARE!**

The depression area in the south-east Bay of Bengal has concentrated into a deep depression and lay centered 460 km southeast to Trincomalee at 1130hrs today (01<sup>st</sup> December). The system is very likely to intensify into a cyclonic storm during the next 24 hours.

The system is very likely to move west-northwestwards and cross eastern coast of Sri Lanka between Batticaloa and Point-Pedro around Wednesday (02<sup>nd</sup> December) evening/night.



Source: RSMC India

Marine Division  
Department of Meteorology  
Colombo 07, Sri Lanka  
+94 112686686

For Safer Shipping



# Weather Forecast For Fishery and Naval Community

Forecast position and approximate distance to the center location from Trincomalee			
Date/Time (SLST) (Hrs)	Position (Lat/Lon)	Category	Distance (km)
2020.12.01/1730	7.9N/84.6E	Cyclonic Storm	380
2020.12.01/2330	8.1N/84.0E	Cyclonic Storm	310
2020.12.02/0530	8.3N/83.2E	Cyclonic Storm	220
2020.12.02/1130	8.5N/82.4E	Cyclonic Storm	130
2020.12.02/2330	8.7N/80.8E	Cyclonic Storm	40

## **WARNINGS:**

### **For Sea Area**

Under the influence of aforementioned system, from 01<sup>st</sup> December to 03<sup>rd</sup> December;

- The sea area around the island will be very rough to high as the wind speed can be increased up to **(80-100) kmph** at times.
- Storm surge of about 1 meter height above the astronomical tide is likely to inundate low lying areas of east Sri Lanka coast during landfall.

## **ACTION SUGGESTED:**

### **For the Sea area:**

- Naval and fishing communities are are warned not to venture to the sea areas around the island until further notice.
- Those who are out at aforementioned sea regions are advised to return to coasts or moved safer areas as soon as possible.

The next bulletin will be issued at 10.00 p.m. at 01<sup>st</sup> December 2020.

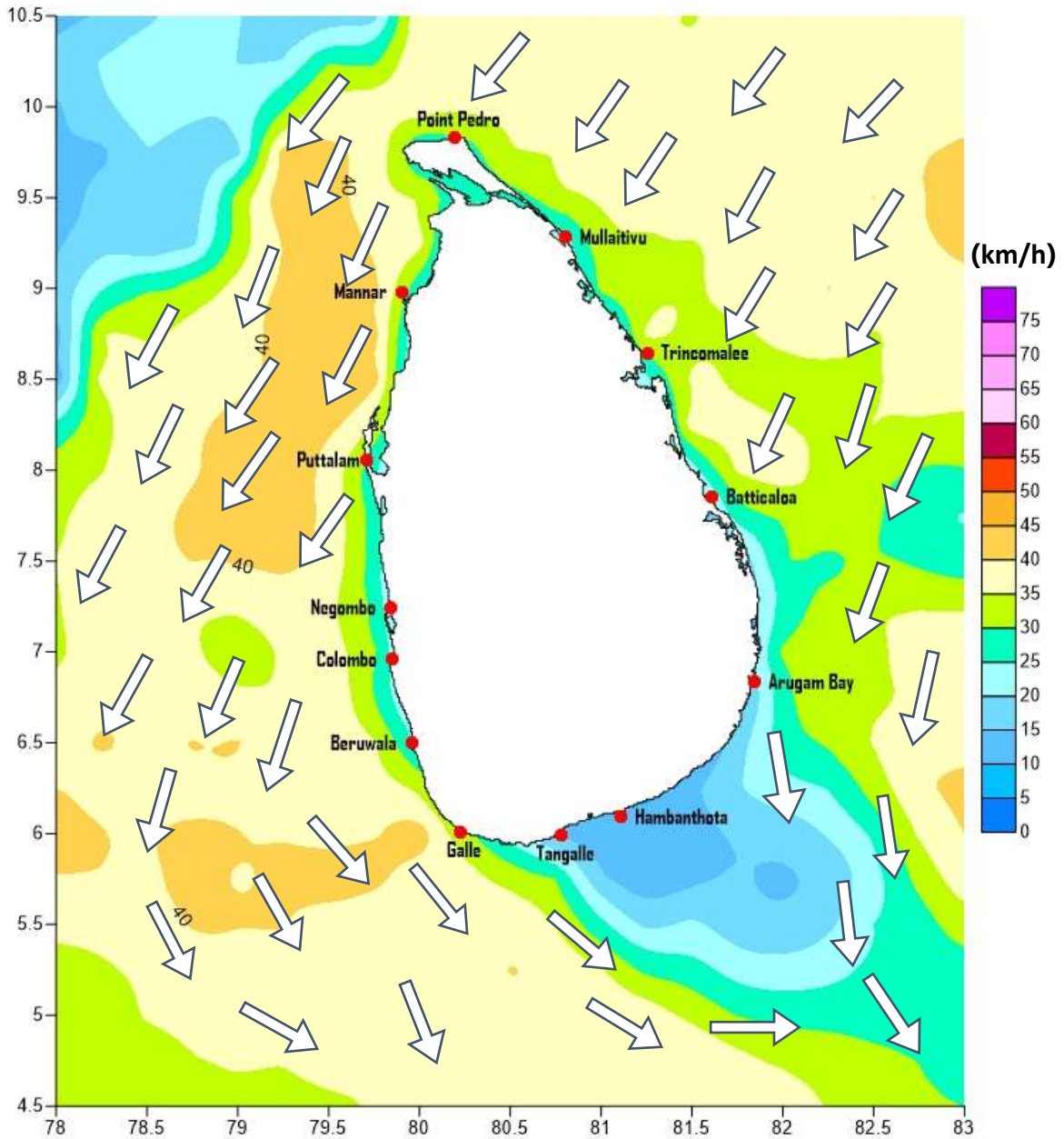
Marine Division  
Department of Meteorology  
Colombo 07, Sri Lanka  
+94 112686686

**For Safer Shipping**



# Weather Forecast For Fishery and Naval Community

Marine weather forecast for 05.30 a.m. to 05.30 p.m. on 02/12/2020



Marine Division  
Department of Meteorology  
Colombo 07, Sri Lanka  
+94 112686686

For Safer Shipping



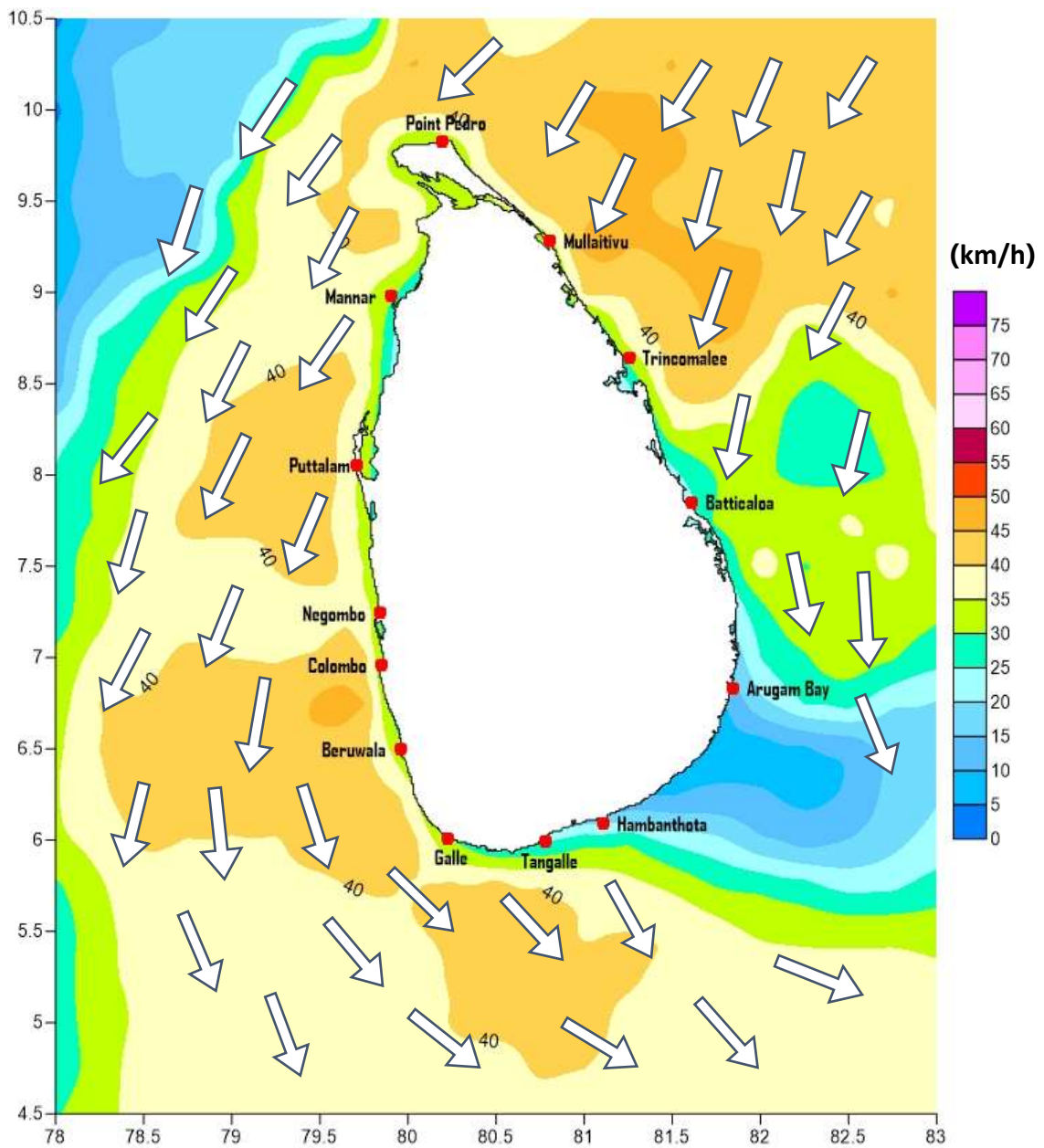
## Weather Forecast For Fishery and Naval Community

Sea Area	Wind Speed	Wave Height	Sea Condition	Weather
<b>Puttalam to Mannar</b>	35-45 kmph; 60-65 kmph at times.	2.25-3.0 m; 5.0m at times.	Fairly rough; Rough to very rough at times.	Several spells of showers
<b>Mannar to Kankasanthurai</b>	35-45 kmph; 60-65 kmph at times.	2.25-3.0 m; 5.0m at times.	Fairly rough; Rough to very rough at times.	Showers at times.
<b>Kankasanthurai to Trincomalee</b>	35-45 kmph; 60-65 kmph at times.	2.25-3.0 m; 5.0m at times.	Fairly rough; Rough to very rough at times.	Showers or thundershowers will occur at several places. Heavy falls are likely at some places.
<b>Trincomalee to Batticaloa</b>	35-45 kmph; 55-60 kmph at times.	2.25-3.0 m; 4.5m at times.	Moderate to fairly rough; Rough at times.	Showers or thundershowers will occur at several places. Heavy falls are likely at some places.
<b>Batticaloa to Pottuvil</b>	35-45 kmph; 55-60 kmph at times.	2.25-3.0 m; 4.5m at times.	Moderate to fairly rough; Rough at times.	Showers or thundershowers will occur at several places.
<b>Pottuvil to Hambantota</b>	30-40 kmph; 50 kmph at times.	1.25-2.5 m; 3.5m at times.	Moderate; Fairly rough at times.	Showers or thundershowers may occur at several places.
<b>Hambantota to Galle</b>	30-40 kmph; 50 kmph at times.	1.25-2.5 m; 3.5m at times.	Moderate; Fairly rough at times.	A few showers are likely.
<b>Galle to Colombo</b>	35-45 kmph; 55-60 kmph at times.	2.25-3.0 m; 4.5m at times.	Moderate to fairly rough; Rough at times.	A few showers are likely.
<b>Colombo to Puttalam</b>	35-45 kmph; 55-60 kmph at times.	2.25-3.0 m; 4.5m at times.	Moderate to fairly rough; Rough at times.	Several spells of showers



# Weather Forecast For Fishery and Naval Community

Marine weather forecast for 05.30 p.m. on 02/12/2020 to 05.30 a.m. on 03/12/2020



Marine Division  
Department of Meteorology  
Colombo 07, Sri Lanka  
+94 112686686

For Safer Shipping



## Weather Forecast For Fishery and Naval Community

Sea Area	Wind Speed	Wave Height	Sea Condition	Weather
<b>Puttalam to Mannar</b>	35-45 kmph; 60-70 kmph at times.	2.25-3.0 m; 4.5-5.5m at times.	Fairly rough; Rough to very rough at times.	Showers or thundershowers will occur at several places. Heavy falls are likely at some places.
<b>Mannar to Kankasanthurai</b>	35-45 kmph; 60-70 kmph at times.	2.25-3.0 m; 4.5-5.5m at times.	Fairly rough; Rough to very rough at times.	Showers or thundershowers will occur at several places. Heavy falls are likely at some places.
<b>Kankasanthurai to Trincomalee</b>	35-45 kmph; 60-70 kmph at times.	2.25-3.0 m; 4.5-5.5m at times.	Fairly rough; Rough to very rough at times.	Showers or thundershowers will occur at several places. Heavy falls are likely at some places.
<b>Trincomalee to Batticaloa</b>	35-45 kmph; 60-65 kmph at times.	2.25-3.0 m; 5.0m at times.	Fairly rough; Rough to very rough at times.	Showers or thundershowers will occur at several places. Heavy falls are likely at some places.
<b>Batticaloa to Pottuvil</b>	35-45 kmph; 55-60 kmph at times.	2.25-3.0 m; 4.5m at times.	Moderate to fairly rough; Rough at times.	Showers or thundershowers occur at times.
<b>Pottuvil to Hambantota</b>	30-40 kmph; 50 kmph at times.	1.25-2.5 m; 3.5m at times.	Moderate; Fairly rough at times.	Showers or thundershowers may occur at times.
<b>Hambantota to Galle</b>	30-40 kmph; 50 kmph at times.	1.25-2.5 m; 3.5m at times.	Moderate; Fairly rough at times.	Showers or thundershowers are likely at a few places.
<b>Galle to Colombo</b>	35-45 kmph; 55-60 kmph at times.	2.25-3.0 m; 4.5m at times.	Moderate to fairly rough; Rough at times.	Showers or thunder showers may occur at several places.
<b>Colombo to Puttalam</b>	35-45 kmph; 55-60 kmph at times.	2.25-3.0 m; 4.5m at times.	Moderate to fairly rough; Rough at times.	Showers or thundershowers are likely at a few places.

**\*\*Temporarily strong gusty winds (up to 60 -70 kmph) and very rough seas can be expected during Thundershowers.**

Marine Division  
Department of Meteorology  
Colombo 07, Sri Lanka  
+94 112686686

**For Safer Shipping**

