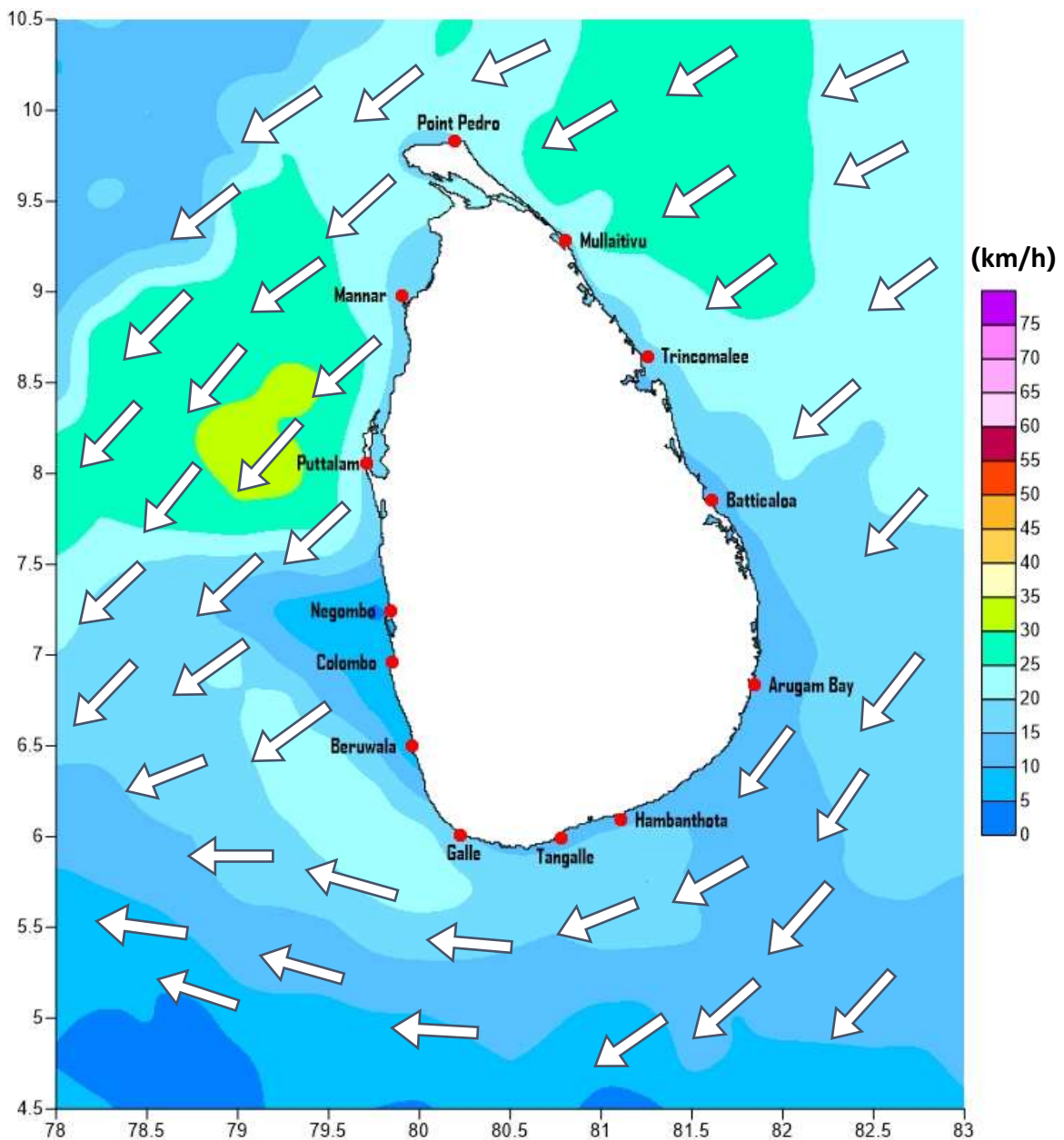


# Weather Forecast For Fishery and Naval Community

Marine weather forecast for sea areas around the island  
Issued at 04.00 p.m. on 14 January 2021

Marine weather forecast for 05.30 a.m. to 05.30 p.m. on 15/01/2021



Marine Division  
Department of Meteorology  
Colombo 07, Sri Lanka  
+94 112686686

For Safer Shipping



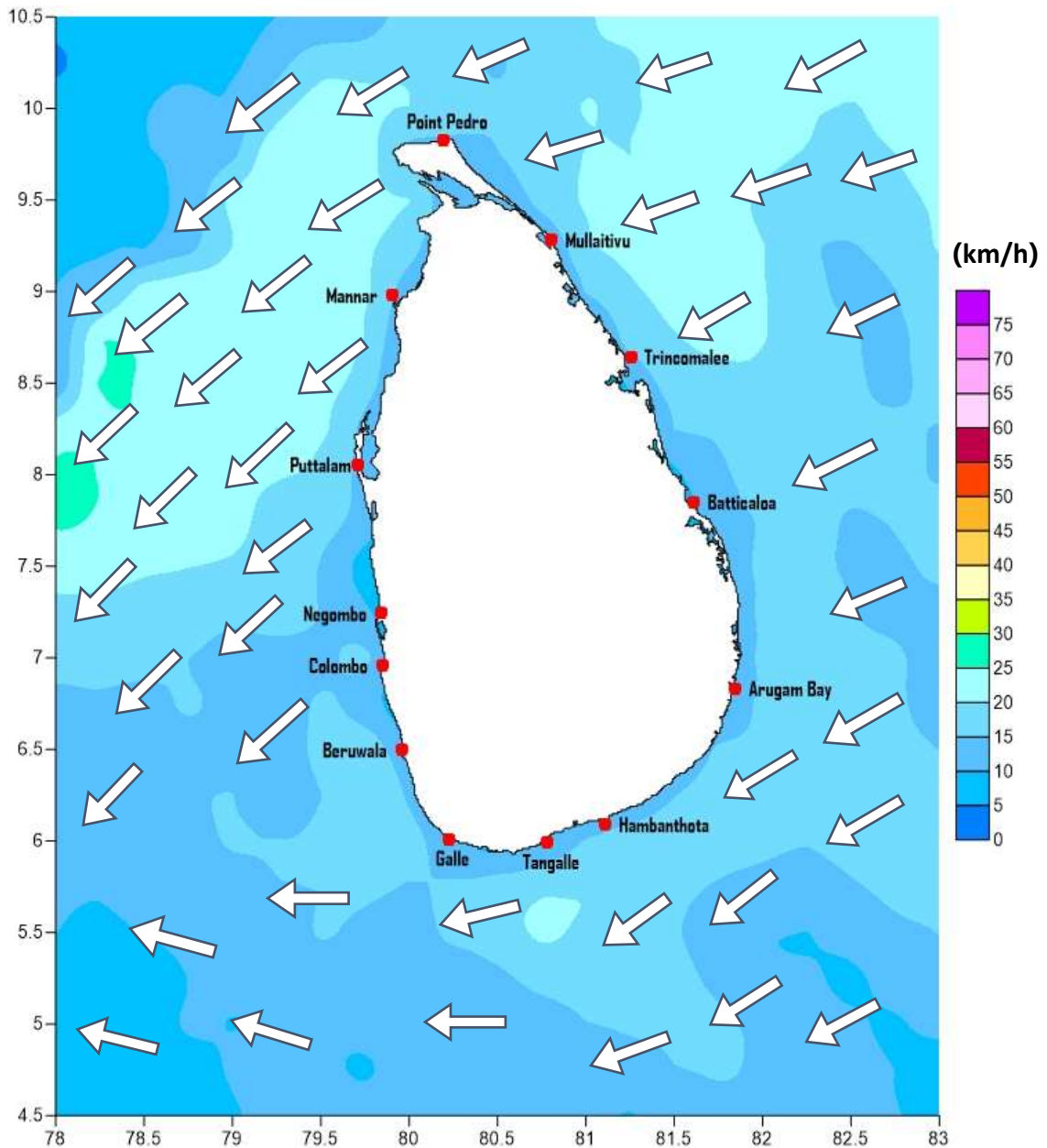
## Weather Forecast For Fishery and Naval Community

Sea Area	Wind Speed	Wave Height	Sea Condition	Weather
<b>Puttalam to Mannar</b>	30-40 kmph; 50 kmph at times.	1.25-2.5 m; 3.5m at times.	Moderate; Fairly rough at times.	Showers or thundershowers will occur at several places.
<b>Mannar to Kankasanthurai</b>	30-40 kmph; 50 kmph at times.	1.25-2.5 m; 3.5m at times.	Moderate; Fairly rough at times.	Showers or thundershowers will occur at several places.
<b>Kankasanthurai to Trincomalee</b>	30-40 kmph; 50 kmph at times.	1.25-2.5 m; 3.5m at times.	Moderate; Fairly rough at times.	Showers or thundershowers will occur at several places.
<b>Trincomalee to Batticaloa</b>	30-40 kmph.	1.25 - 2.5 m.	Moderate.	Showers or thundershowers will occur at several places.
<b>Batticaloa to Pottuvil</b>	30-40 kmph.	1.25 - 2.5 m.	Moderate.	Showers or thundershowers will occur at several places.
<b>Pottuvil to Hambantota</b>	30-40 kmph.	1.25 - 2.5 m.	Moderate.	Showers or thundershowers will occur at several places.
<b>Hambantota to Galle</b>	15-25 kmph.	0.5-1.0 m.	Slight.	Showers or thundershowers will occur at several places.
<b>Galle to Colombo</b>	15-25 kmph.	0.5-1.0 m.	Slight.	Showers or thundershowers will occur at several places.
<b>Colombo to Puttalam</b>	30-40 kmph.	1.25 - 2.5 m.	Moderate.	Showers or thundershowers will occur at several places.



# Weather Forecast For Fishery and Naval Community

Marine weather forecast for 05.30 p.m. on 15/01/2021 to 05.30 a.m. on 16/01/2021



Marine Division  
Department of Meteorology  
Colombo 07, Sri Lanka  
+94 112686686

For Safer Shipping



## Weather Forecast For Fishery and Naval Community

Sea Area	Wind Speed	Wave Height	Sea Condition	Weather
<b>Puttalam to Mannar</b>	30-40 kmph; 50 kmph at times.	1.25-2.5 m; 3.5m at times.	Moderate; Fairly rough at times.	Showers or thundershowers will occur at several places.
<b>Mannar to Kankasanthurai</b>	30-40 kmph; 50 kmph at times.	1.25-2.5 m; 3.5m at times.	Moderate; Fairly rough at times.	Showers or thundershowers will occur at several places.
<b>Kankasanthurai to Trincomalee</b>	30-40 kmph; 50 kmph at times.	1.25-2.5 m; 3.5m at times.	Moderate; Fairly rough at times.	Showers or thundershowers will occur at several places.
<b>Trincomalee to Batticaloa</b>	30-40 kmph.	1.25 - 2.5 m.	Moderate.	Showers or thundershowers will occur at several places.
<b>Batticaloa to Pottuvil</b>	30-40 kmph.	1.25 - 2.5 m.	Moderate.	Showers or thundershowers will occur at several places.
<b>Pottuvil to Hambantota</b>	30-40 kmph.	1.25 - 2.5 m.	Moderate.	Showers or thundershowers will occur at several places.
<b>Hambantota to Galle</b>	15-25 kmph.	0.5-1.0 m.	Slight.	Showers or thundershowers will occur at several places.
<b>Galle to Colombo</b>	15-25 kmph.	0.5-1.0 m.	Slight.	Showers or thundershowers will occur at several places.
<b>Colombo to Puttalam</b>	30-40 kmph.	1.25 - 2.5 m.	Moderate.	Showers or thundershowers will occur at several places.

**\*\*Temporarily strong gusty winds (up to 60 -70 kmph) and very rough seas can be expected during Thundershowers**

Marine Division  
Department of Meteorology  
Colombo 07, Sri Lanka  
+94 112686686

**For Safer Shipping**

