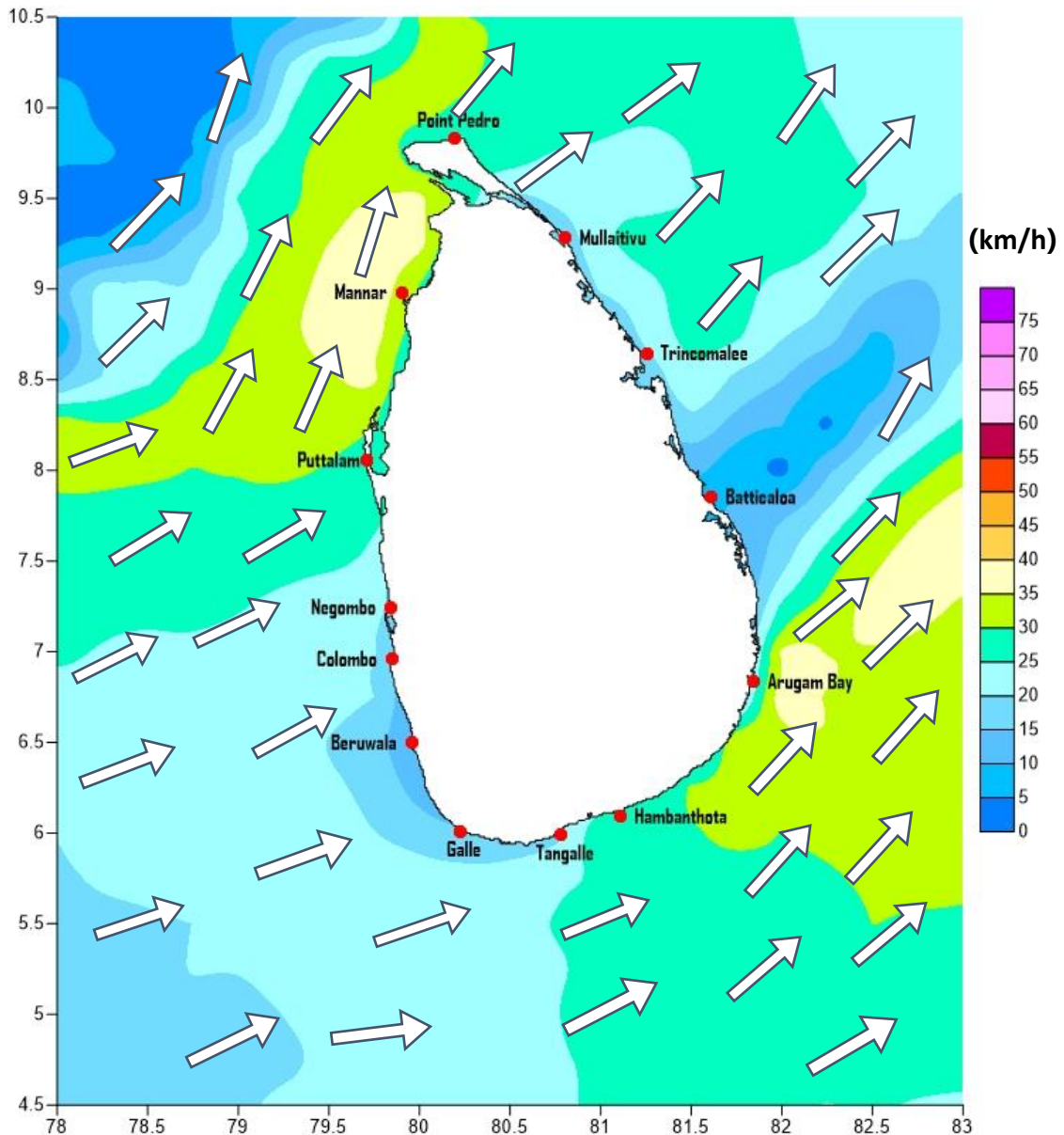


# Weather Forecast For Fishery and Naval Community

Marine weather forecast for sea areas around the island  
Issued at 04.00 p.m. on 16 May 2019

Marine weather forecast for 05.30 a.m. to 05.30 p.m. on 17/05/2019



Marine Division  
Department of Meteorology  
Colombo 07, Sri Lanka  
+94 112686686

For Safer Shipping



# Weather Forecast For Fishery and Naval Community

Sea Area	Wind Speed	Wave Height	Sea Condition	Weather
Puttalam to Mannar	30-40 kmph ; 50 kmph at times.	1.25-2.5 m ; 3.5m at times.	Moderate; Rough at times.	Mainly fair.
Mannar to Kankasanthurai	30-40 kmph ; 50 kmph at times.	1.25-2.5 m ; 3.5m at times.	Moderate; Rough at times.	Mainly fair.
Kankasanthurai to Trincomalee	30-35 kmph.	1.25-2.25 m.	Moderate.	Mainly fair.
Trincomalee to Batticaloa	20-30 kmph.	0.75-1.25 m.	Slight.	Mainly fair.
Batticaloa to Pottuvil	30-35 kmph ; 45 kmph at times.	1.25-2.25 m ; 3.0m at times.	Moderate; Rough at times.	Mainly fair.
Pottuvil to Hambantota	30-40 kmph ; 50 kmph at times.	1.25-2.5 m ; 3.5m at times.	Moderate; Rough at times.	Few showers in the morning.
Hambantota to Matara	30-35 kmph.	1.25-2.25 m.	Moderate.	Few showers in the morning.
Matara to Colombo	20-30 kmph.	0.75-1.25 m.	Slight.	Few showers in the morning.
Colombo to Puttalam	30-40 kmph.	1.25-2.5 m.	Moderate.	Few showers in the morning.

\*\*

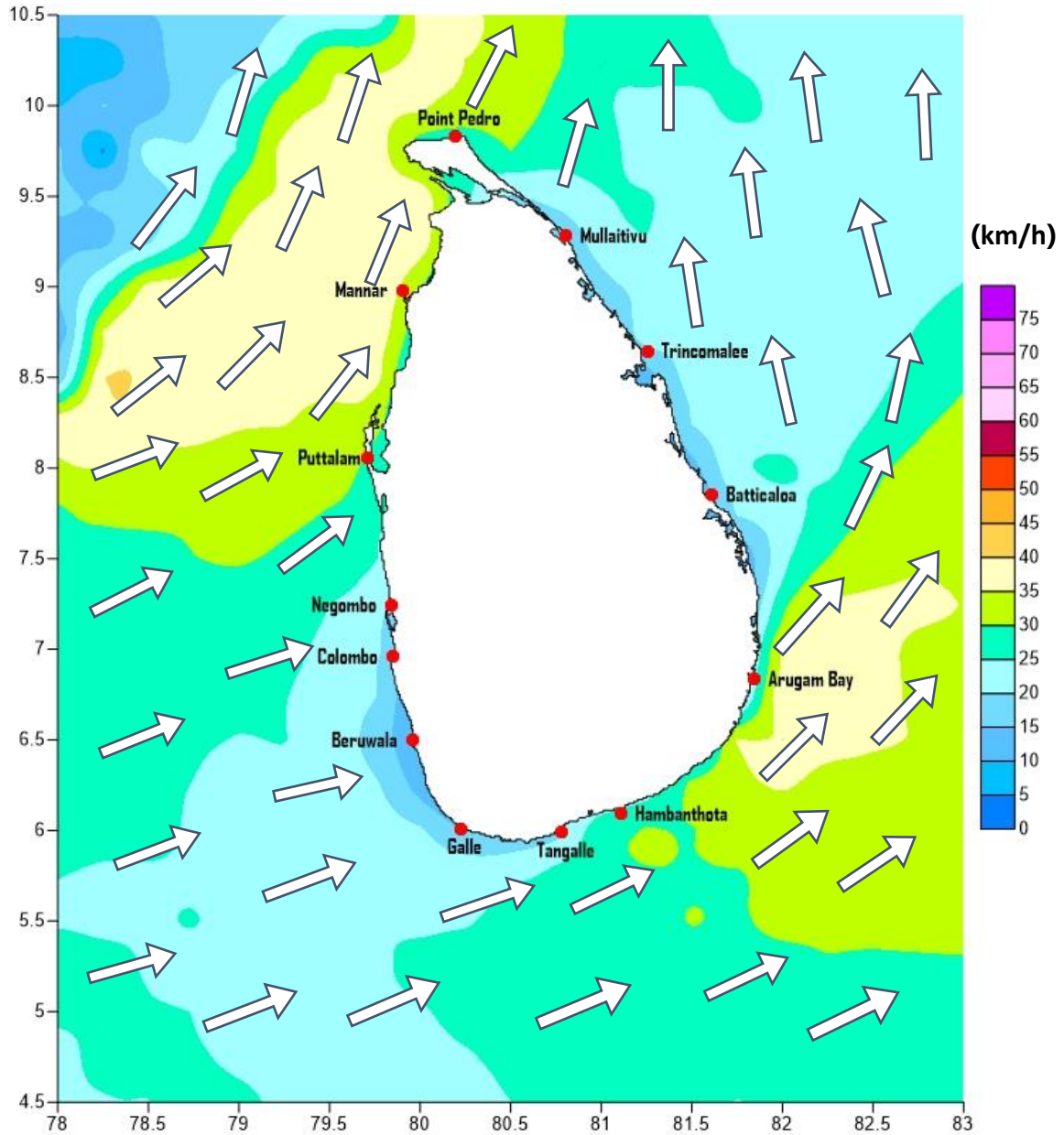
Marine Division  
Department of Meteorology  
Colombo 07, Sri Lanka  
+94 112686686

For Safer Shipping



# Weather Forecast For Fishery and Naval Community

Marine weather forecast for 05.30 p.m. on 17/05/2019 to 05.30 a.m. to 18/05/2019



Marine Division  
Department of Meteorology  
Colombo 07, Sri Lanka  
+94 112686686

For Safer Shipping



# Weather Forecast For Fishery and Naval Community

Sea Area	Wind Speed	Wave Height/	Sea Condition	Weather
Puttalam to Mannar	30-40 kmph ; 50 kmph at times.	1.25-2.5 m; 3.5m at times.	Moderate; Rough at times.	Mainly fair.
Mannar to Kankasanthurai	30-40 kmph ; 50 kmph at times.	1.25-2.5 m; 3.5m at times.	Moderate; Rough at times.	Mainly fair.
Kankasanthurai to Trincomalee	30-40 kmph.	1.5-2.5 m.	Moderate.	Mainly fair.
Trincomalee to Batticaloa	30-35 kmph.	1.25-2.25 m.	Moderate.	Mainly fair.
Batticaloa to Pottuvil	30-40 kmph ; 50 kmph at times.	1.25-2.5 m; 3.5m at times.	Moderate; Rough at times.	Mainly fair.
Pottuvil to Hambantota	30-40 kmph ; 50 kmph at times.	1.25-2.5 m; 3.5m at times.	Moderate; Rough at times.	Mainly fair.
Hambantota to Matara	30-35 kmph.	1.25-2.25 m.	Moderate.	Some spells of showers at Several places in the dawn.
Matara to Colombo	20-30 kmph.	0.75-1.25 m.	Slight.	Some spells of showers at Several places in the dawn.
Colombo to Puttalam	30-40 kmph.	1.5-2.5 m.	Moderate.	Some spells of showers at Several places in the dawn.

\*\*

Marine Division  
Department of Meteorology  
Colombo 07, Sri Lanka  
+94 112686686

**For Safer Shipping**

