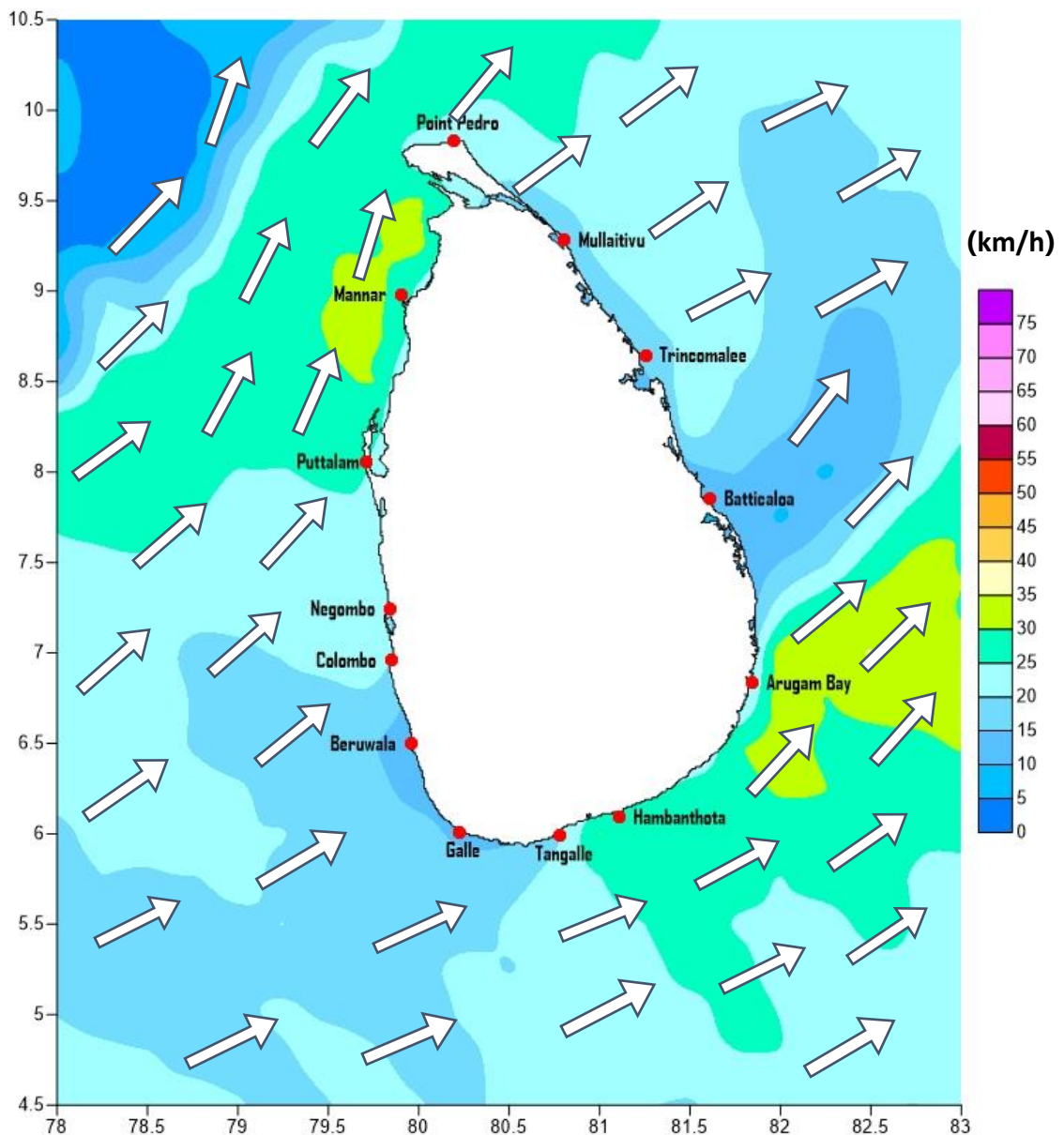


Weather Forecast For Fishery and Naval Community

Marine weather forecast for sea areas around the island

Issued at 04.00 p.m. on 20 May 2019

Marine weather forecast for 05.30 a.m. to 05.30 p.m. on 21/05/2019



Marine Division
Department of Meteorology
Colombo 07, Sri Lanka
+94 112686686

For Safer Shipping



Weather Forecast For Fishery and Naval Community

Sea Area	Wind Speed	Wave Height	Sea Condition	Weather
Puttalam to Mannar	30-40 kmph ; 50 kmph at times.	1.25-2.5 m ; 3.5m at times.	Moderate; Rough at times.	Mainly fair.
Mannar to Kankasanthurai	30-40 kmph ; 50 kmph at times.	1.25-2.5 m ; 3.5m at times.	Moderate; Rough at times.	Mainly fair.
Kankasanthurai to Trincomalee	20-30 kmph.	0.75-1.25 m.	Slight.	Mainly fair.
Trincomalee to Batticaloa	20-30 kmph.	0.75-1.25 m.	Slight.	Mainly fair.
Batticaloa to Pottuvil	30-35 kmph ; 50 kmph at times.	1.25-2.25 m ; 3.5m at times.	Moderate; Rough at times.	Mainly fair.
Pottuvil to Hambantota	30-40 kmph ; 50 kmph at times.	1.25-2.5 m ; 3.5m at times.	Moderate; Rough at times.	Showers or thundershowers are likely at few places
Hambantota to Matara	30-35 kmph.	1.25-2.25 m.	Moderate.	Showers or thundershowers are likely at few places
Matara to Colombo	20-30 kmph.	0.75-1.25 m.	Slight.	Showers or thundershowers are likely at few places
Colombo to Puttalam	30-40 kmph.	1.25-2.5 m.	Moderate.	Showers or thundershowers are likely at few places

**

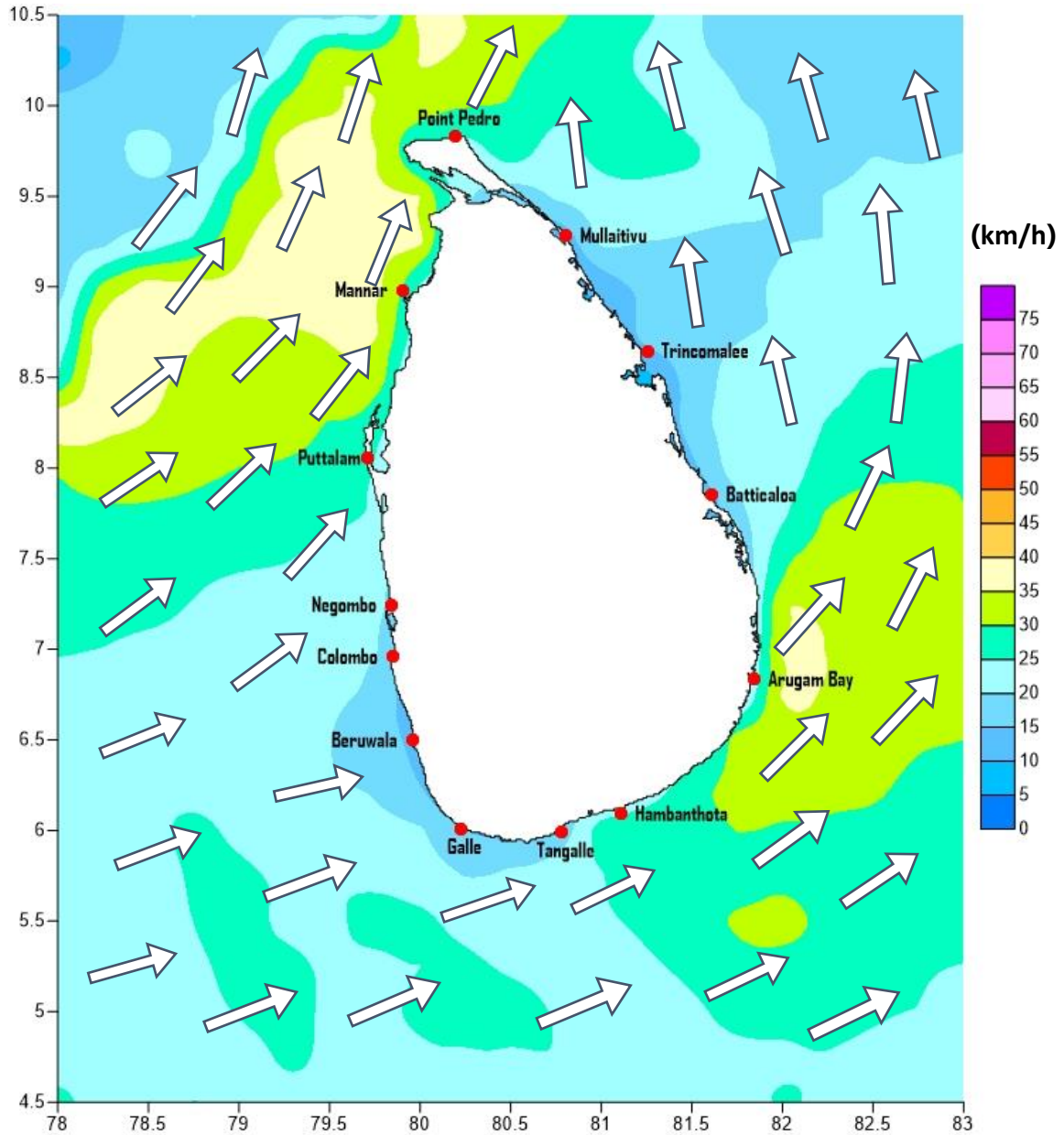
Marine Division
Department of Meteorology
Colombo 07, Sri Lanka
+94 112686686

For Safer Shipping



Weather Forecast For Fishery and Naval Community

Marine weather forecast for 05.30 p.m. on 21/05/2019 to 05.30 a.m. to 22/05/2019



Marine Division
Department of Meteorology
Colombo 07, Sri Lanka
+94 112686686

For Safer Shipping



Weather Forecast For Fishery and Naval Community

Sea Area	Wind Speed	Wave Height/	Sea Condition	Weather
Puttalam to Mannar	30-40 kmph ; 50 kmph at times.	1.25-2.5 m; 3.5m at times.	Moderate; Rough at times.	Mainly fair.
Mannar to Kankasanthurai	30-40 kmph ; 50 kmph at times.	1.25-2.5 m; 3.5m at times.	Moderate; Rough at times.	Mainly fair.
Kankasanthurai to Trincomalee	30-40 kmph.	1.5-2.5 m.	Moderate.	Mainly fair.
Trincomalee to Batticaloa	30-35 kmph.	1.25-2.25 m.	Moderate.	Mainly fair.
Batticaloa to Pottuvil	30-40 kmph ; 50 kmph at times.	1.25-2.5 m; 3.5m at times.	Moderate; Rough at times.	Mainly fair.
Pottuvil to Hambantota	30-40 kmph ; 50 kmph at times.	1.25-2.5 m; 3.5m at times.	Moderate; Rough at times.	Showers or thundershowers are likely at few places
Hambantota to Matara	25-35 kmph; 45 kmph at times.	1.0-2.25 m; 3.0m at times.	Slight to moderate; Fairly rough at times.	Showers or thundershowers are likely at few places
Matara to Colombo	20-30 kmph.	0.75-1.25 m.	Slight.	Showers or thundershowers are likely at few places
Colombo to Puttalam	30-40 kmph.	1.5-2.5 m.	Moderate.	Showers or thundershowers are likely at few places

**

Marine Division
Department of Meteorology
Colombo 07, Sri Lanka
+94 112686686

For Safer Shipping

