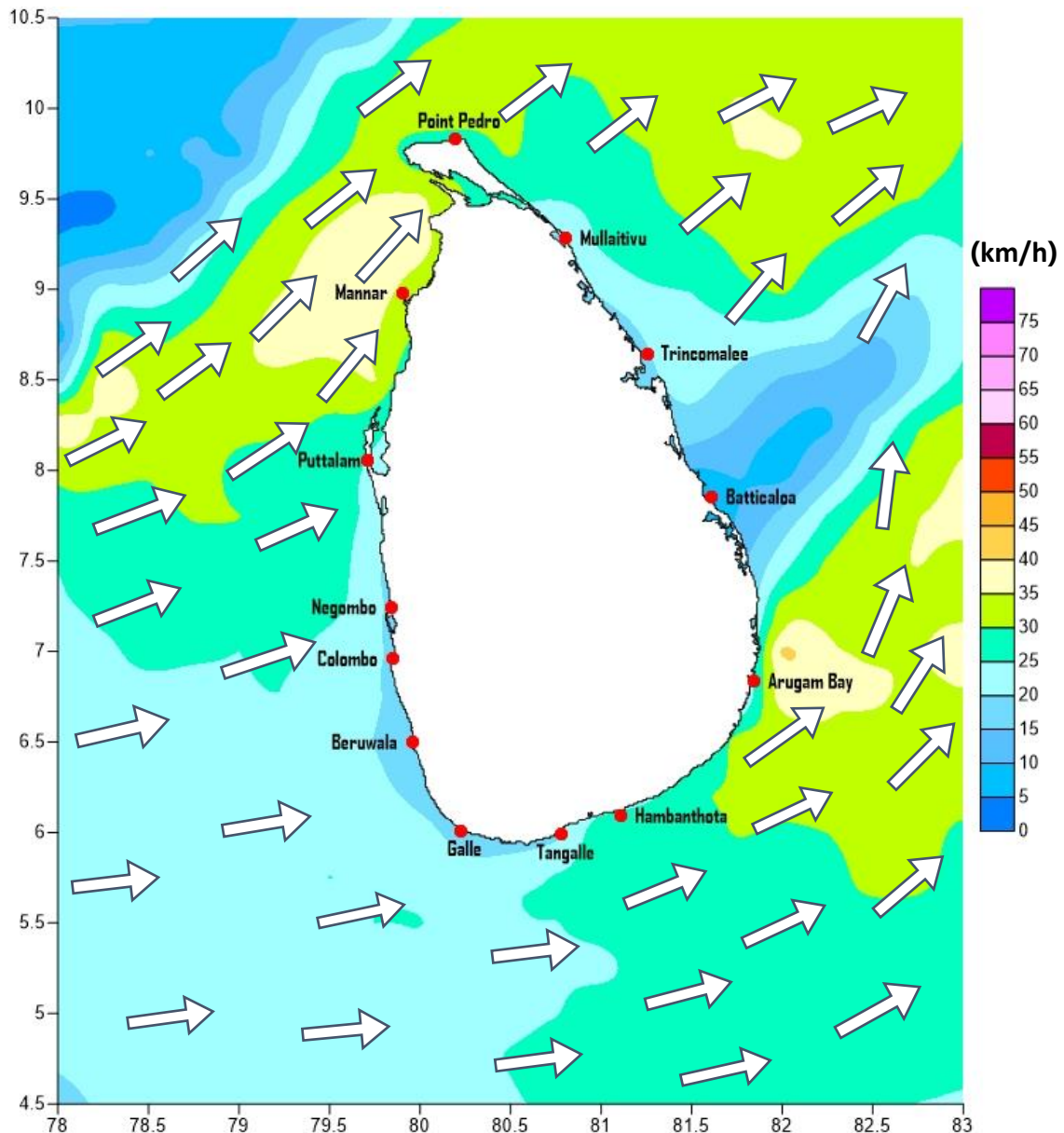


# Weather Forecast For Fishery and Naval Community

Marine weather forecast for sea areas around the island  
Issued at 04.00 p.m. on 25 September 2020

Marine weather forecast for 05.30 a.m. to 05.30 p.m. on 26/09/2020



Marine Division  
Department of Meteorology  
Colombo 07, Sri Lanka  
+94 112686686

For Safer Shipping



## Weather Forecast For Fishery and Naval Community

Sea Area	Wind Speed	Wave Height	Sea Condition	Weather
<b>Puttalam to Mannar</b>	30-40 kmph; 50 kmph at times.	1.25-2.5 m; 3.5m at times.	Moderate; Fairly rough at times.	Showers or thundershowers will occur at several places.
<b>Mannar to Kankasanthurai</b>	30-40 kmph; 50 kmph at times.	1.25-2.5 m; 3.5m at times.	Moderate; Fairly rough at times.	Showers or thundershowers will occur at several places.
<b>Kankasanthurai to Trincomalee</b>	30-40 kmph.	1.25-2.5 m.	Moderate.	Showers or thundershowers will occur at several places.
<b>Trincomalee to Batticaloa</b>	30-40 kmph.	1.25-2.5 m.	Moderate.	Showers or thundershowers will occur at several places.
<b>Batticaloa to Pottuvil</b>	30-40 kmph.	1.25-2.5 m.	Moderate.	Few showers are likely
<b>Pottuvil to Hambantota</b>	30-40 kmph; 50 kmph at times.	1.25-2.5 m; 3.5m at times.	Moderate; Fairly rough at times.	Few showers are likely
<b>Hambantota to Galle</b>	30-40 kmph.	1.25-2.5 m.	Moderate.	Showers or thundershowers will occur at several places.
<b>Galle to Colombo</b>	30-40 kmph.	1.25-2.5 m.	Moderate.	Showers or thundershowers will occur at times.
<b>Colombo to Puttalam</b>	30-40 kmph.	1.25-2.5 m.	Moderate.	Showers or thundershowers will occur at several places.

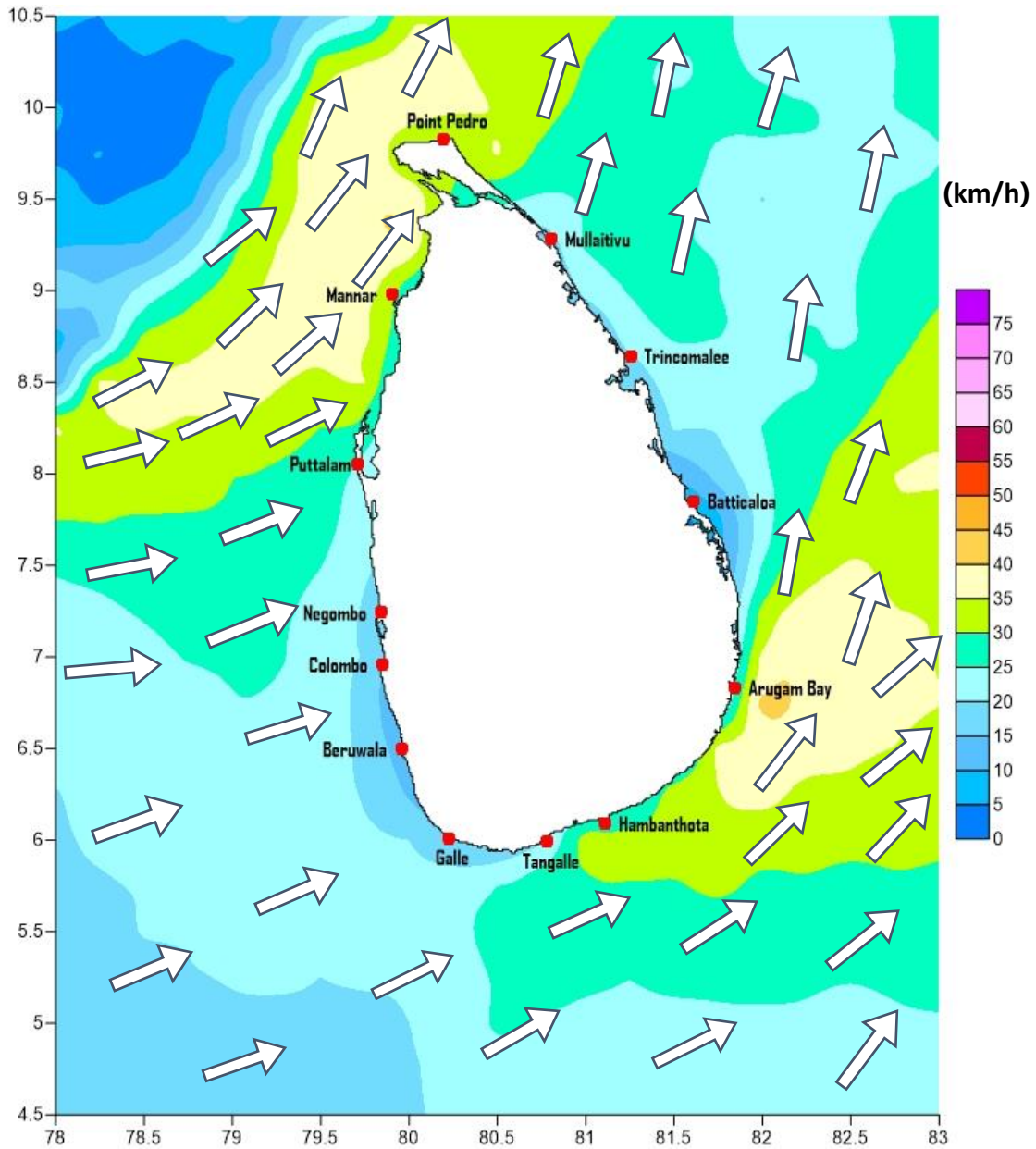
Marine Division  
Department of Meteorology  
Colombo 07, Sri Lanka  
+94 112686686

**For Safer Shipping**



# Weather Forecast For Fishery and Naval Community

Marine weather forecast for 05.30 p.m. on 25/09/2020 to 05.30 a.m. on 26/09/2020



Marine Division  
Department of Meteorology  
Colombo 07, Sri Lanka  
+94 112686686

For Safer Shipping



## Weather Forecast For Fishery and Naval Community

Sea Area	Wind Speed	Wave Height	Sea Condition	Weather
Puttalam to Mannar	30-40 kmph; 50 kmph at times.	1.25-2.5 m; 3.5m at times.	Moderate; Fairly rough at times.	Showers or thundershowers will occur at several places.
Mannar to Kankasanthurai	30-40 kmph; 50 kmph at times.	1.25-2.5 m; 3.5m at times.	Moderate; Fairly rough at times.	Showers or thundershowers will occur at several places.
Kankasanthurai to Trincomalee	30-40 kmph.	1.25-2.5 m.	Moderate.	Showers or thundershowers will occur at several places.
Trincomalee to Batticaloa	30-40 kmph.	1.25-2.5 m.	Moderate.	Showers or thundershowers will occur at several places.
Batticaloa to Pottuvil	30-40 kmph.	1.25-2.5 m.	Moderate.	Few showers are likely
Pottuvil to Hambantota	30-40 kmph; 50 kmph at times.	1.25-2.5 m; 3.5m at times.	Moderate; Fairly rough at times.	Few showers are likely
Hambantota to Galle	30-40 kmph.	1.25-2.5 m.	Moderate.	Showers or thundershowers will occur at several places.
Galle to Colombo	30-40 kmph.	1.25-2.5 m.	Moderate.	Showers or thundershowers will occur at times.
Colombo to Puttalam	30-40 kmph.	1.25-2.5 m.	Moderate.	Showers or thundershowers will occur at several places.

**\*\*Temporarily strong gusty winds (up to 70-80 kmph) and very rough seas can be expected during thundershowers.**

Marine Division  
Department of Meteorology  
Colombo 07, Sri Lanka  
+94 112686686

**For Safer Shipping**

