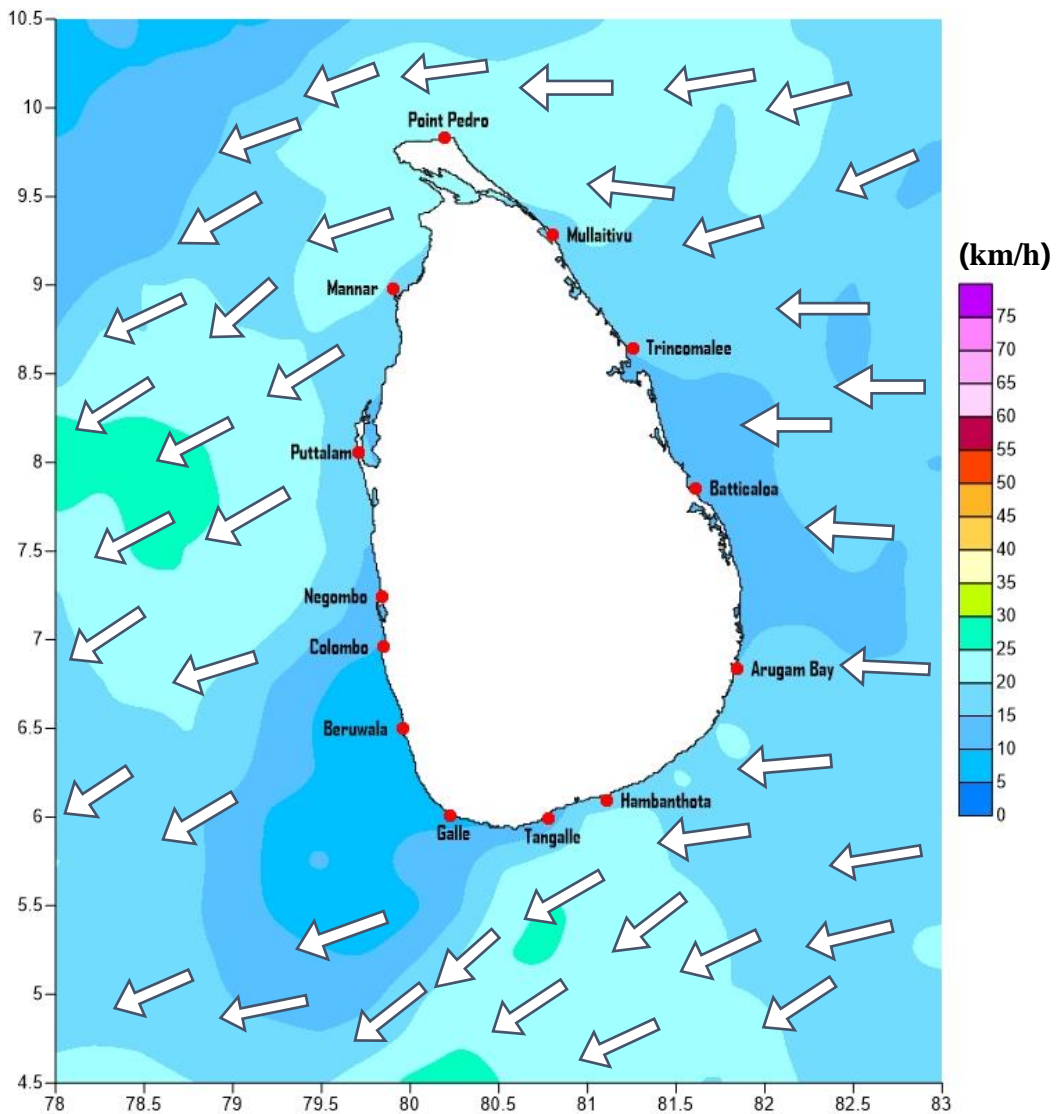


# Weather Forecast For Fishery and Naval Community

Marine weather forecast for sea areas around the island

Issued at 04.00 p.m. on 26 January 2022

Marine weather forecast for 05.30 a.m. to 05.30 p.m. on 26/01/2022



Marine Division  
Department of Meteorology  
Colombo 07, Sri Lanka  
+94 112686686

For Safer Shipping



## Weather Forecast For Fishery and Naval Community

Sea Area	Wind Speed	Wave Height	Sea Condition	Weather
Puttalam to Mannar	20-30 kmph.	0.75-1.25 m.	Slight.	Mainly fair.
Mannar to Kankasanthurai	20-30 kmph.	0.75-1.25 m.	Slight.	Mainly fair.
Kankasanthurai to Trincomalee	20-30 kmph.	0.75-1.25 m.	Slight.	Mainly fair.
Trincomalee to Batticaloa	20-30 kmph.	0.75-1.25 m.	Slight.	A few showers are likely.
Batticaloa to Pottuvil	20-30 kmph.	0.75-1.25 m.	Slight.	A few showers are likely.
Pottuvil to Hambantota	20-30 kmph; 35 kmph at times.	0.75-1.25 m; 2.25 m at times	Slight; moderate at times.	Mainly fair.
Hambantota to Matara	20-30 kmph.	0.75-1.25 m.	Slight.	Mainly fair.
Matara to Colombo	20-30 kmph.	0.75-1.25 m.	Slight.	Mainly fair.
Colombo to Puttalam	20-30 kmph; 35 kmph at times.	0.75-1.25 m; 2.25 m at times	Slight; moderate at times.	A few showers.

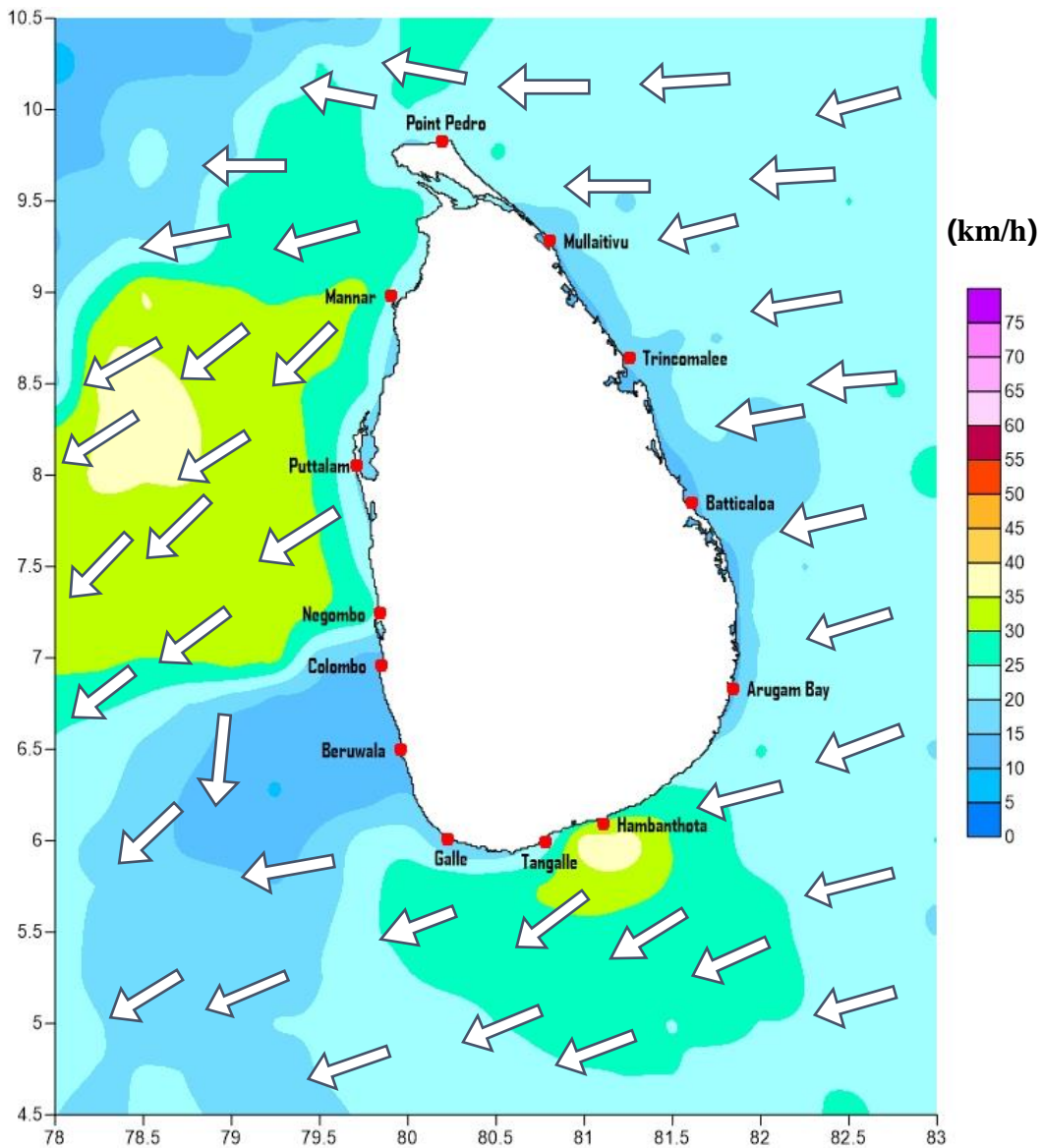
Marine Division  
Department of Meteorology  
Colombo 07, Sri Lanka  
+94 112686686

For Safer Shipping



# Weather Forecast For Fishery and Naval Community

Marine weather forecast for 05.30 p.m. on 27/01/2022 to 05.30 a.m. on 28/01/2022



Marine Division  
Department of Meteorology  
Colombo 07, Sri Lanka  
+94 112686686

For Safer Shipping



## Weather Forecast For Fishery and Naval Community

Sea Area	Wind Speed	Wave Height	Sea Condition	Weather
Puttalam to Mannar	20-30 kmph.	0.75-1.25 m.	Slight.	Mainly fair.
Mannar to Kankasanthurai	20-30 kmph.	0.75-1.25 m.	Slight.	Mainly fair.
Kankasanthurai to Trincomalee	20-30 kmph.	0.75-1.25 m.	Slight.	Mainly fair.
Trincomalee to Batticaloa	20-30 kmph.	0.75-1.25 m.	Slight.	Mainly fair.
Batticaloa to Pottuvil	20-30 kmph.	0.75-1.25 m.	Slight.	Mainly fair.
Pottuvil to Hambantota	20-30 kmph; 40 kmph at times.	0.75-1.25 m; 2.5 m at times	Slight; moderate at times.	Mainly fair.
Hambantota to Matara	20-30 kmph.	0.75-1.25 m.	Slight.	Mainly fair.
Matara to Colombo	20-30 kmph.	0.75-1.25 m.	Slight.	Mainly fair.
Colombo to Puttalam	20-30 kmph; 40 kmph at times.	0.75-1.25 m; 2.5 m at times	Slight; moderate at times.	Mainly fair.

\*Temporarily strong gusty winds (up to 60-70kmph) and very rough seas can be expected during thundershowers.

Marine Division  
Department of Meteorology  
Colombo 07, Sri Lanka  
+94 112686686

**For Safer Shipping**

