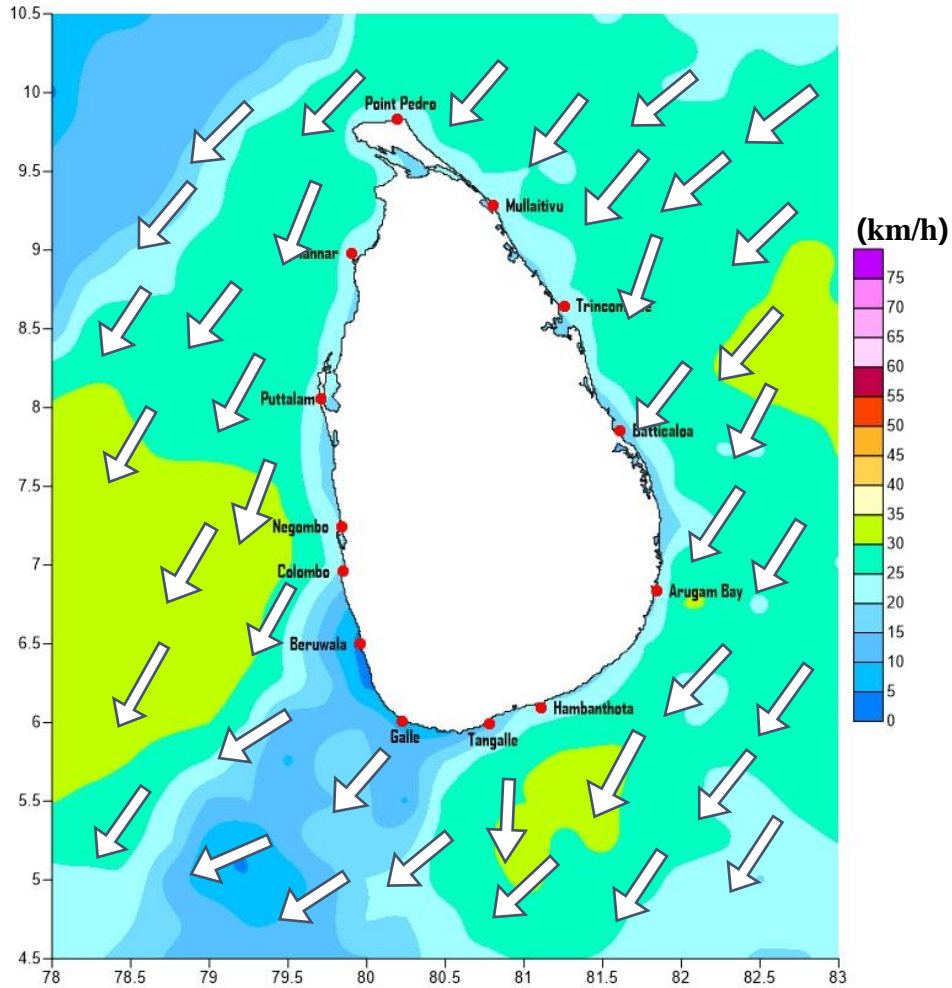


Weather Forecast For Fishery and Naval Community

Marine weather forecast for sea areas around the island
Issued at 04.00 p.m. on 05 February 2023

Marine weather forecast for 05.30 a.m. to 05.30 p.m. on 06/02/2023



Marine Division
Department of Meteorology
Colombo 07, Sri Lanka
+94 112686686

For Safer Shipping



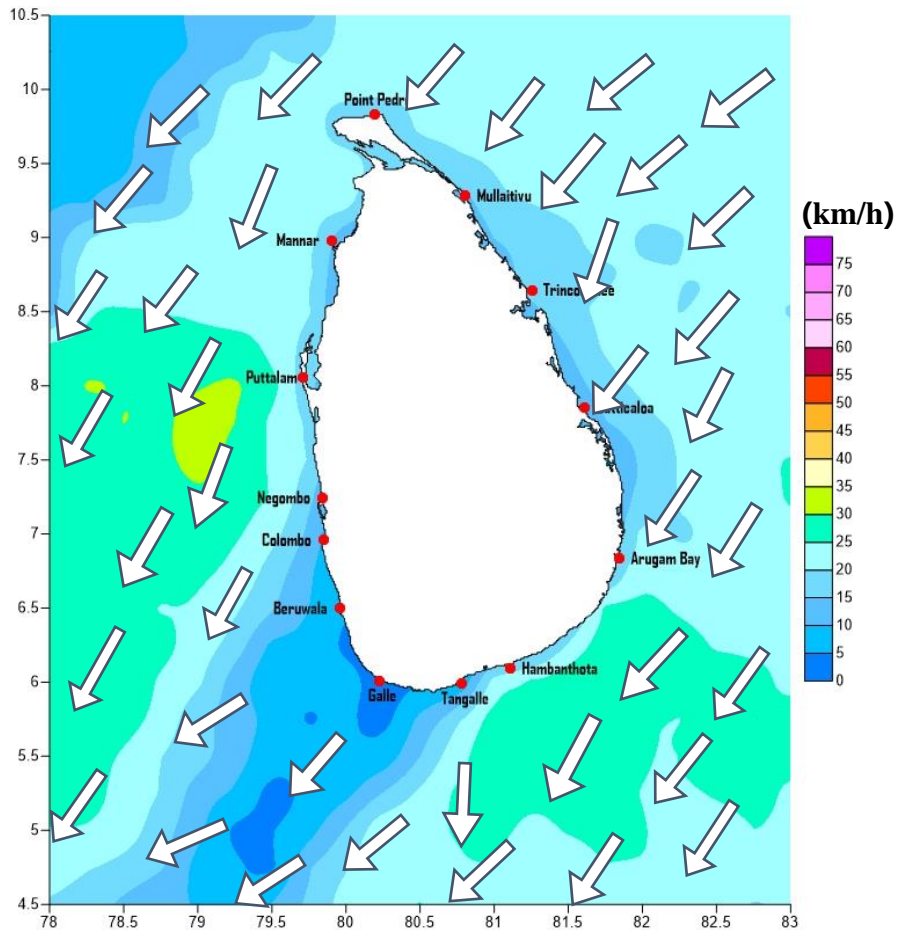
Weather Forecast For Fishery and Naval Community

Sea Area	Wind Speed	Wave Height	Sea Condition	Weather
Puttalam to Mannar	25-35 kmph; 40-45 kmph at times.	1.0-2.25 m; 2.5-3.0 m at times.	Slight to moderate; Fairly rough at times.	A few showers are likely.
Mannar to Kankasanturai	25-35 kmph.	1.0-2.25 m.	Slight to moderate.	A few showers are likely.
Kankasanturai to Trincomalee	25-35 kmph.	1.0-2.25 m.	Slight to moderate.	Showers at times.
Trincomalee to Batticaloa	25-35 kmph.	1.0-2.25 m.	Slight to moderate.	Showers at times.
Batticaloa to Pottuvil	25-35 kmph.	1.0-2.25 m.	Slight to moderate.	Showers at times.
Pottuvil to Hambantota	25-35 kmph; 40-45 kmph at times.	1.0-2.25 m; 2.5-3.0 m at times.	Slight to moderate; Fairly rough at times.	Showers at times.
Hambantota to Galle	25-35 kmph.	1.0-2.25 m.	Slight to moderate.	Showers or thundershowers will occur in the evening
Galle to Colombo	25-35 kmph.	1.0-2.25 m.	Slight to moderate.	Showers or thundershowers will occur in the evening
Colombo to Puttalam	25-35 kmph; 40-45 kmph at times.	1.0-2.25 m; 2.5-3.0 m at times.	Slight to moderate; Fairly rough at times.	Showers or thundershowers will occur in the evening



Weather Forecast For Fishery and Naval Community

Marine weather forecast for 05.30 p.m. on 06/02/2023 to 05.30 a.m. on 07/02/2023



Marine Division
Department of Meteorology
Colombo 07, Sri Lanka
+94 112686686

For Safer Shipping



Weather Forecast For Fishery and Naval Community

Sea Area	Wind Speed	Wave Height	Sea Condition	Weather
Puttalam to Mannar	20-30 kmph; 40 kmph at times.	0.75-1.25 m; 2.5 m at times	Slight; moderate at times.	A few showers are likely.
Mannar to Kankasanturai	20-30 kmph.	0.75-1.25 m.	Slight.	A few showers are likely.
Kankasanturai to Trincomalee	20-30 kmph.	0.75-1.25 m.	Slight.	Showers at times.
Trincomalee to Batticaloa	20-30 kmph.	0.75-1.25 m.	Slight.	Showers at times.
Batticaloa to Pottuvil	20-30 kmph.	0.75-1.25 m.	Slight.	Showers at times.
Pottuvil to Hambantota	20-30 kmph; 40 kmph at times.	0.75-1.25 m; 2.5 m at times	Slight; moderate at times.	Showers at times.
Hambantota to Galle	20-30 kmph.	0.75-1.25 m.	Slight.	Showers or thundershowers will occur in the evening or night.
Galle to Colombo	20-30 kmph.	0.75-1.25 m.	Slight.	Showers or thundershowers will occur in the evening or night.
Colombo to Puttalam	20-30 kmph; 40 kmph at times.	0.75-1.25 m; 2.5 m at times	Slight; moderate at times.	Showers or thundershowers will occur in the evening or night.

****The gusty winds (up to 60-70 kmph) and very rough seas can be expected during thundershowers.**

