

Probabilistic Rainfall Forecast for December 2017

The probabilistic rainfall forecast for December 2017 for Sri Lanka as given below.

The district wise average rainfall is given in the column 2 of the table 1. Chance (probability) of receiving below/about/above average is given in the columns 3, 4, and 5 respectively in the table 1.

There is a higher chance of receiving slightly above average rainfall in all districts for the month of December 2017.

Figure 2 represents the weekly rainfall anomaly forecast for December 2017 from Japanese Meteorological Administration (JMA) model. Above normal rainfall can be expected for first two weeks, and below normal rainfall is predicted for third and near normal rainfall is likely in fourth week of December 2017. According to the monthly rainfall anomaly forecast for December 2017 from Japanese Meteorological Administration (JMA) model (Fig 3), slightly above normal rainfall can be expected for December 2017.

Figure 4 represents the multi-model ensemble probabilistic rainfall forecast for December 2017 from Forecast Customization System (FOCUS) for Sri Lanka, developed by Regional Integrated Multi-Hazard Early Warning System (RIMES). According to the FOCUS, there is a higher probability of receiving slightly above normal rainfall in the intermediate zone. There is no signal in wet zone and dry zone for December 2017.

The probabilistic rainfall forecast for December 2017 for Sri Lanka as given below.

District	Average rainfall (mm) -(December)	Probability %		
		Below	Normal	Above
Colombo	191.7	30	40	30
Kalutara	258.0	25	50	25
Galle	239.6	25	50	25
Matara	219.9	30	40	30
Hambantota	159.2	30	45	25
Ampara	350.5	40	30	30
Batticaloa	388.0	40	30	30
Trincomalee	335.6	50	25	25
Mullaithivu	291.0	50	25	25
Jaffna	257.4	40	30	30
Killinochchi	274.0	40	30	30
Mannar	206.4	50	25	25
Puttalam	126.2	50	25	25
Gampaha	141.1	30	40	30
Kegalle	188.5	25	50	25
Ratnapura	231.5	25	50	25
Monaragala	253.5	40	30	30
Badulla	356.1	40	30	30
Pollonnaruwa	369.5	50	25	25
Vavuniya	256.7	50	25	25
Anuradapura	232.8	60	20	20
Kurunegala	150.2	50	25	25
Matale	357.7	60	20	20
Kandy	308.8	25	50	25
Nuwaraeliya	250.1	30	40	30

Table 1

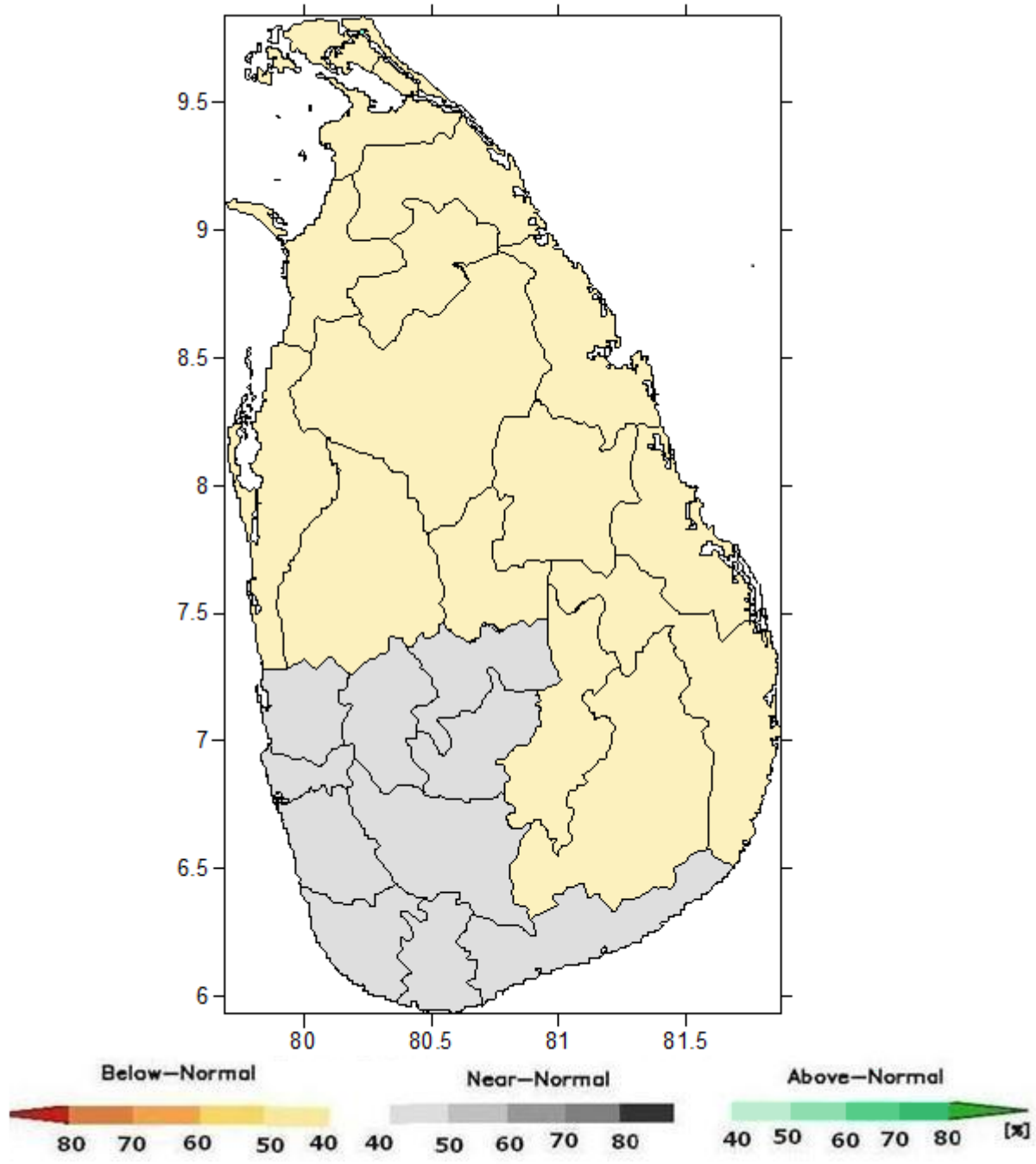


Fig 1. Probabilistic rainfall forecast for December 2017

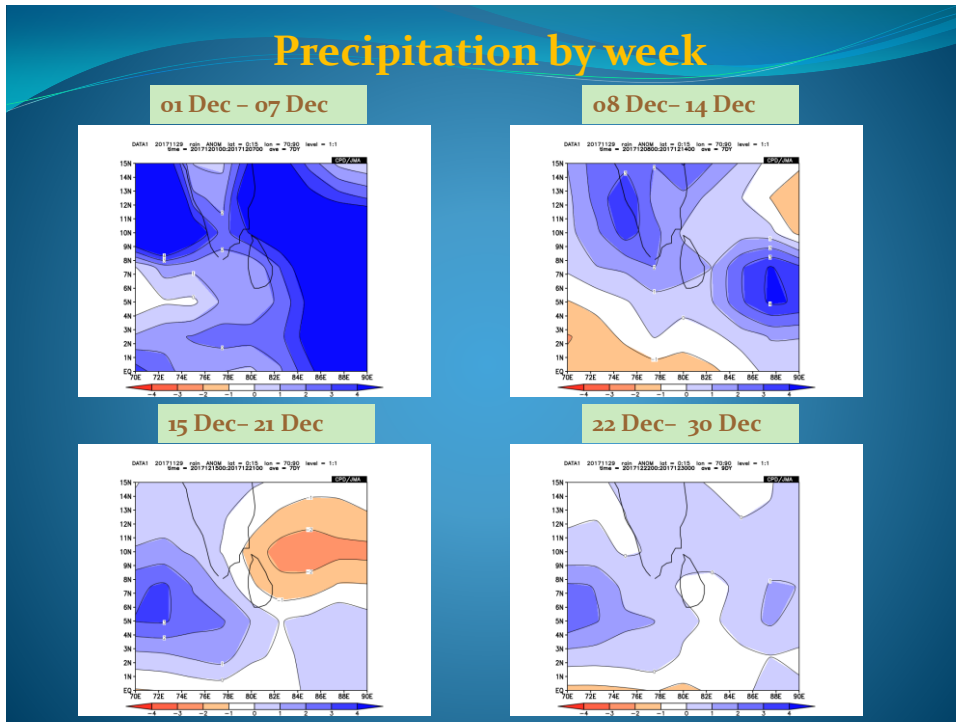


Fig 2. Weekly Rainfall anomaly forecast for December 2017 (01 December – 07 December, Upper left), (08 December –14 December, Upper right), (15 December – 21 December Lower left) and (22 December –30 December, Lower right) from JMA model

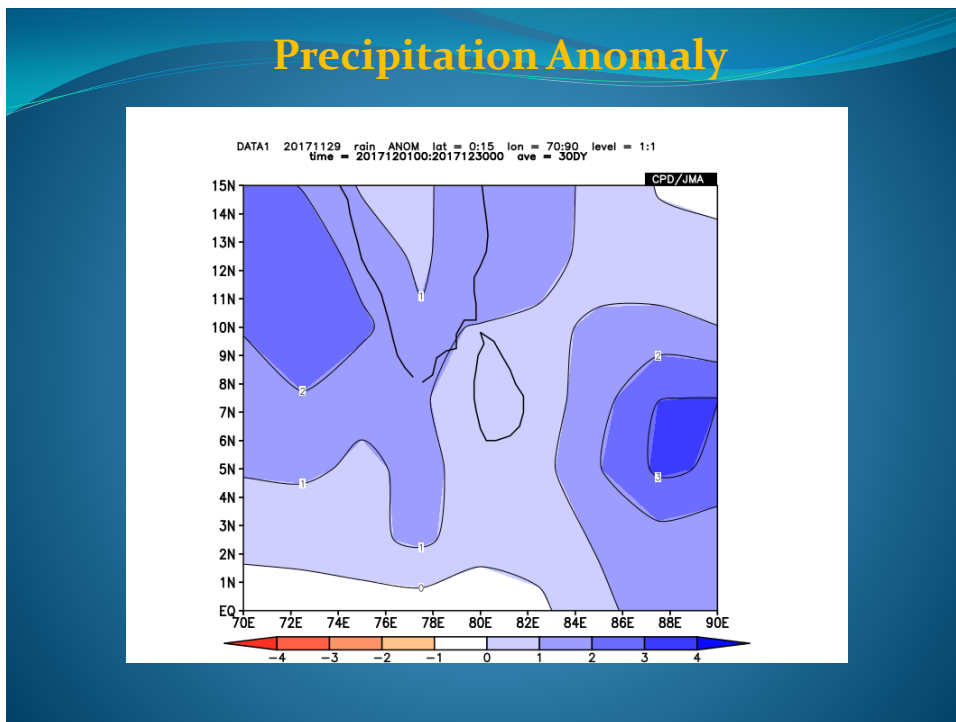


Fig 3. Rainfall anomaly forecast for December 2017 (mm/day) from JMA model

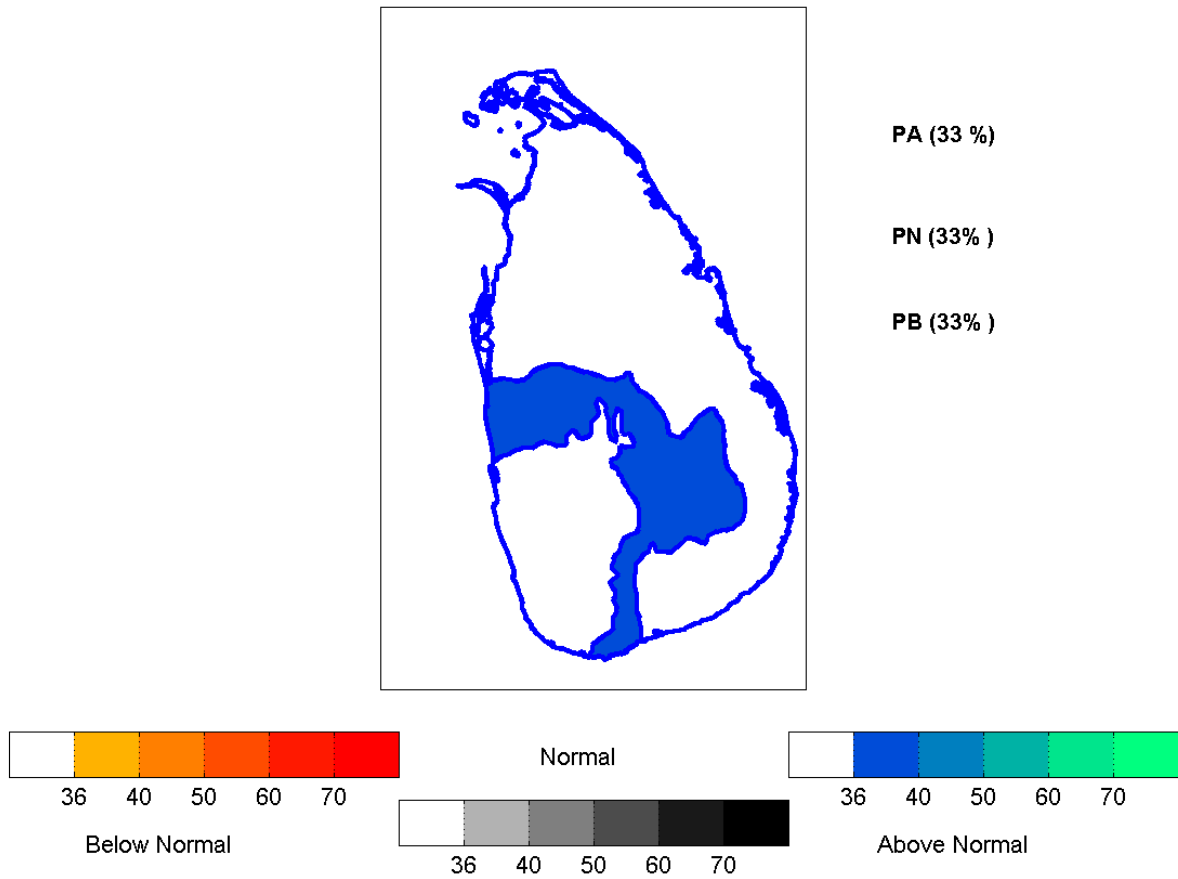


Fig 4. Multi-model ensemble probabilistic forecast for December 2017 from RIMES Forecast Customization System (FOCUS).