

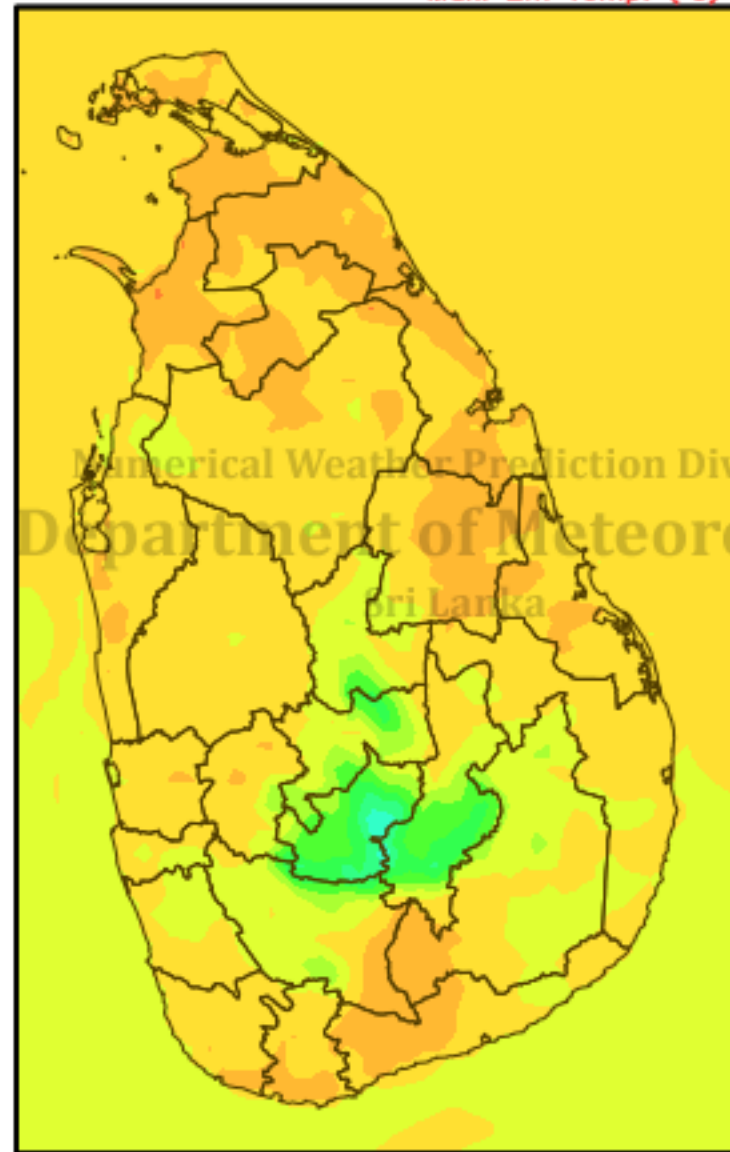
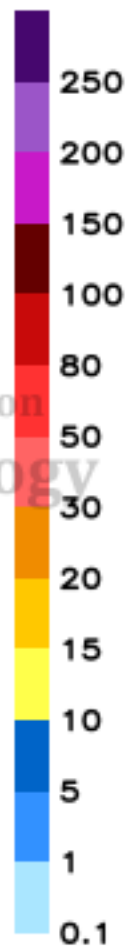
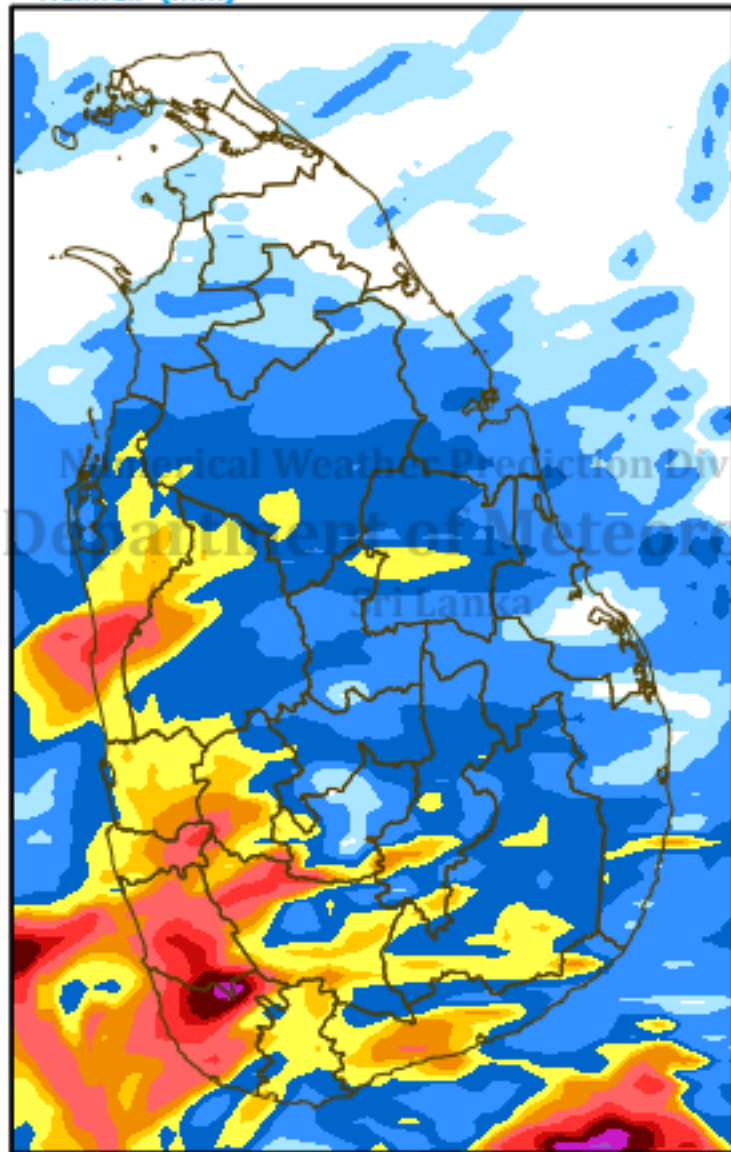
# RAINFALL (mm) & MAX. 2m TEMPERATURE (°C) FORECAST (24h)

Valid for 24 hours ending at 03 UTC of 10 NOV 2018

( Based on model (5km) initialized at 00 UTC 09 NOV 2018 )

Rainfall (mm)

Max. 2m Temp. (°C)



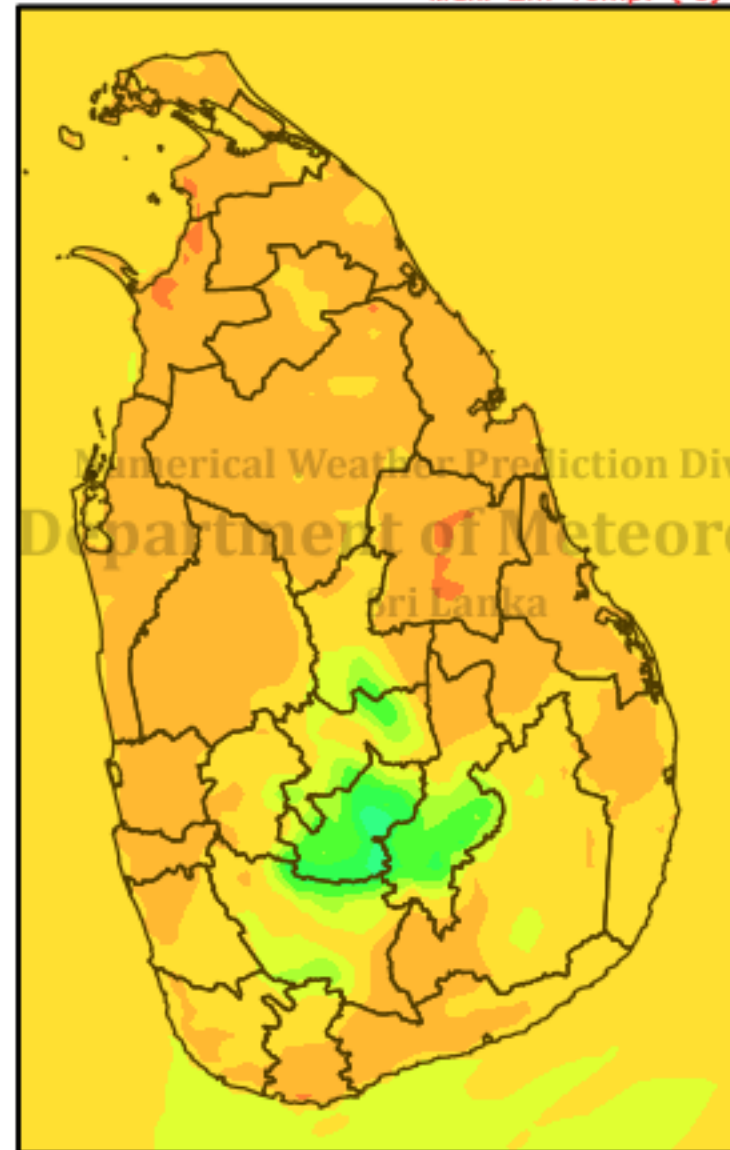
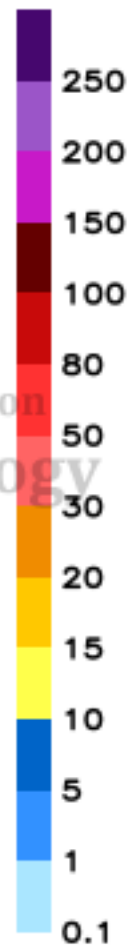
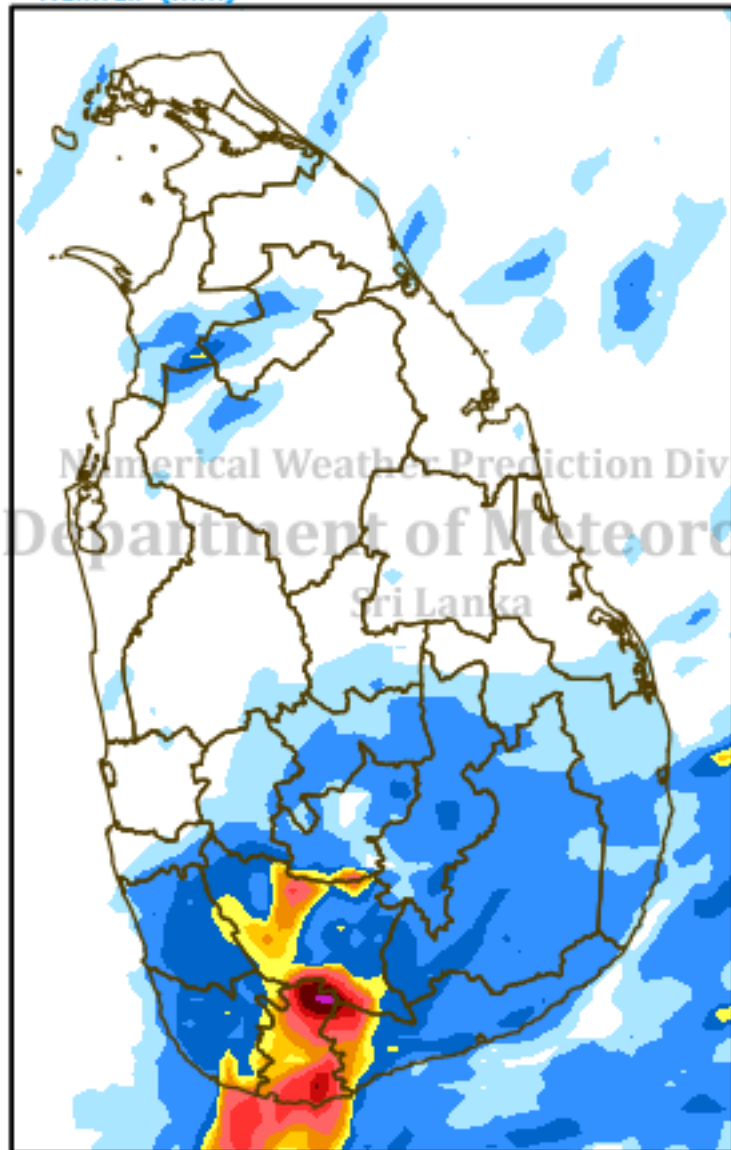
# RAINFALL (mm) & MAX. 2m TEMPERATURE (°C) FORECAST (24h)

Valid for 24 hours ending at 03 UTC of 11 NOV 2018

( Based on model (5km) initialized at 00 UTC 09 NOV 2018 )

Rainfall (mm)

Max. 2m Temp. (°C)



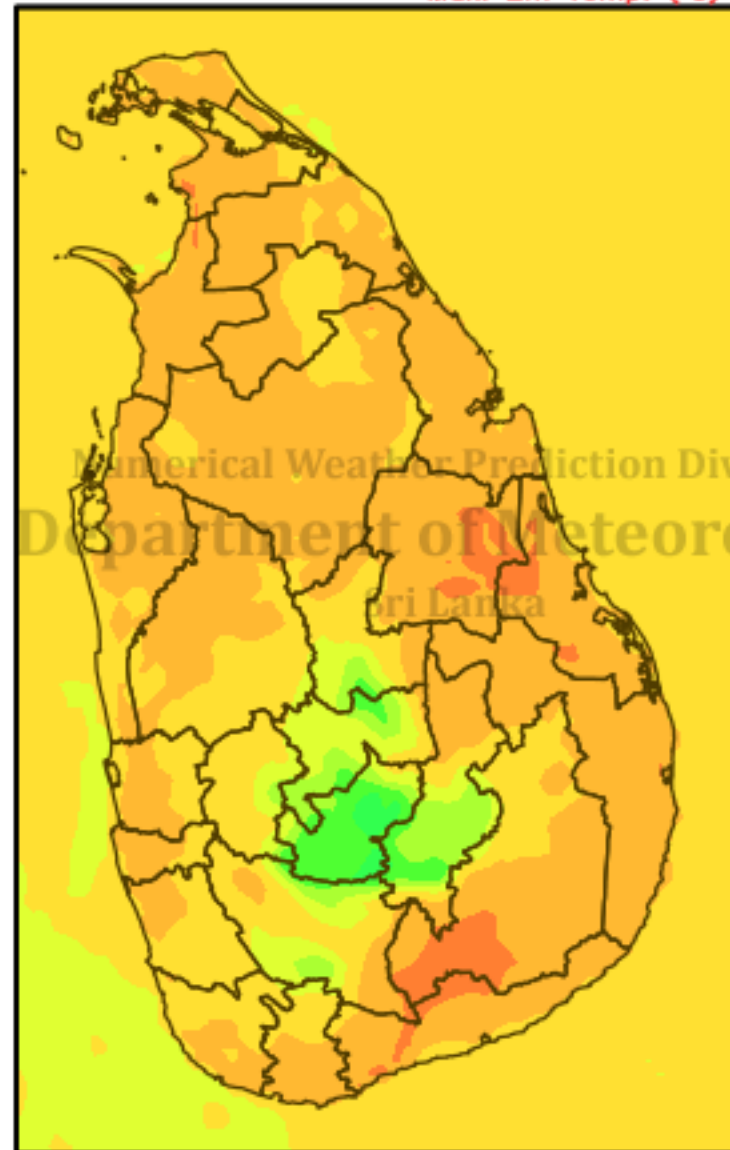
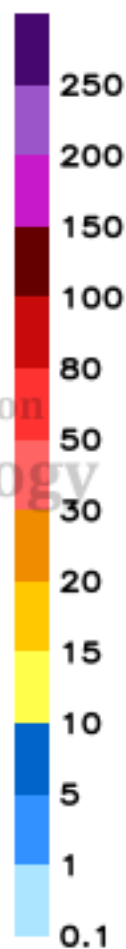
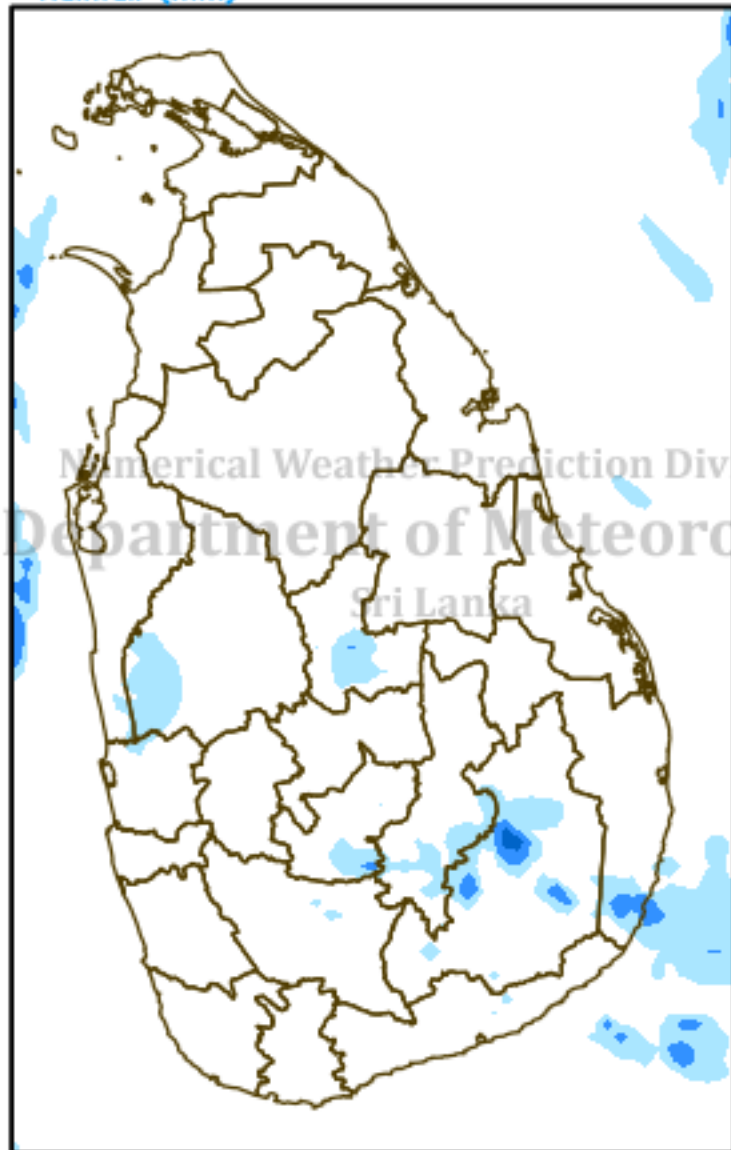
# RAINFALL (mm) & MAX. 2m TEMPERATURE (°C) FORECAST (24h)

Valid for 24 hours ending at 03 UTC of 12 NOV 2018

( Based on model (5km) initialized at 00 UTC 09 NOV 2018 )

Rainfall (mm)

Max. 2m Temp. (°C)



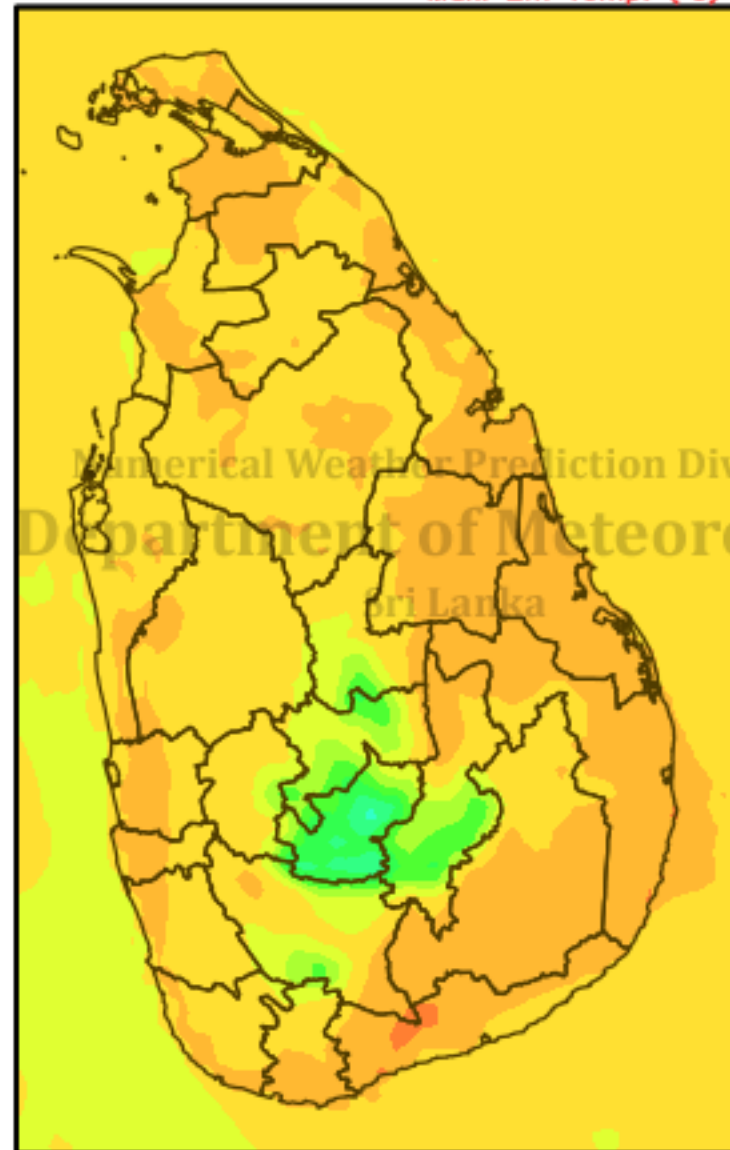
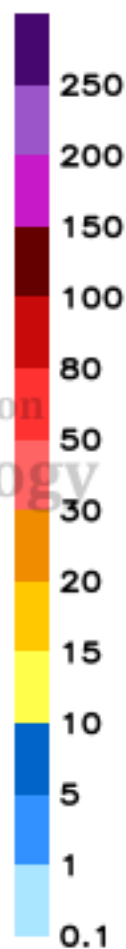
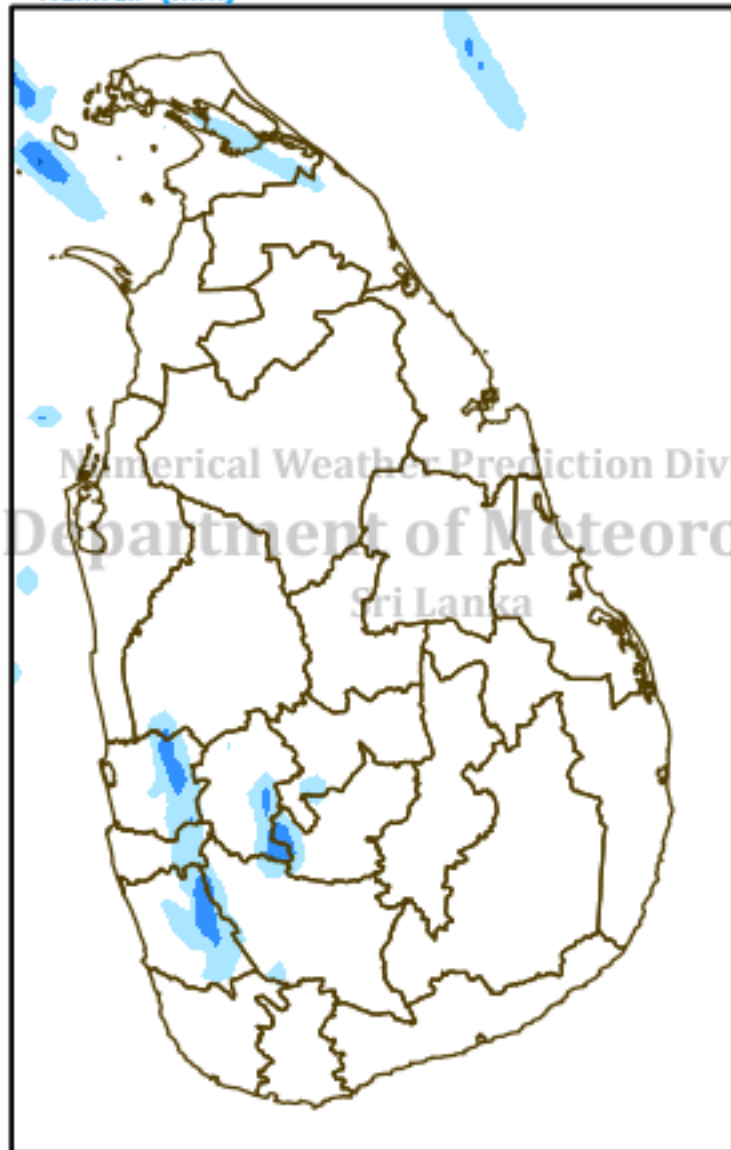
# RAINFALL (mm) & MAX. 2m TEMPERATURE (°C) FORECAST (24h)

Valid for 24 hours ending at 03 UTC of 13 NOV 2018

( Based on model (5km) initialized at 00 UTC 09 NOV 2018 )

Rainfall (mm)

Max. 2m Temp. (°C)





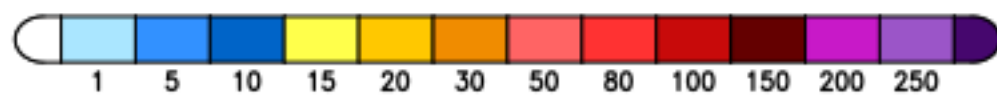
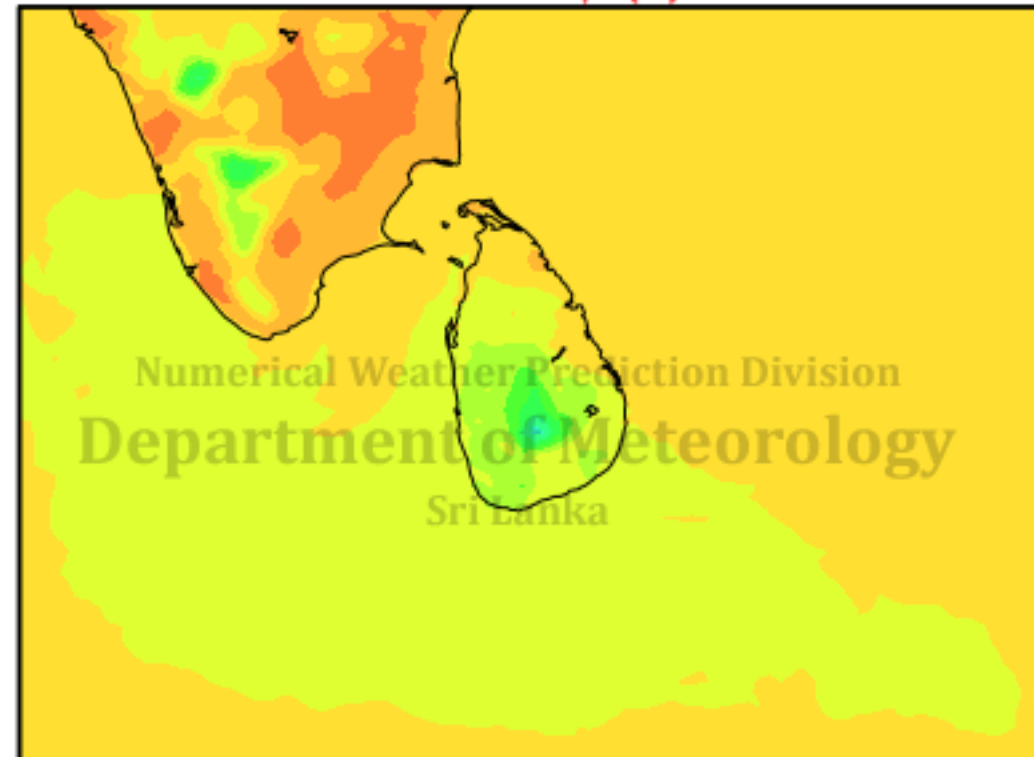
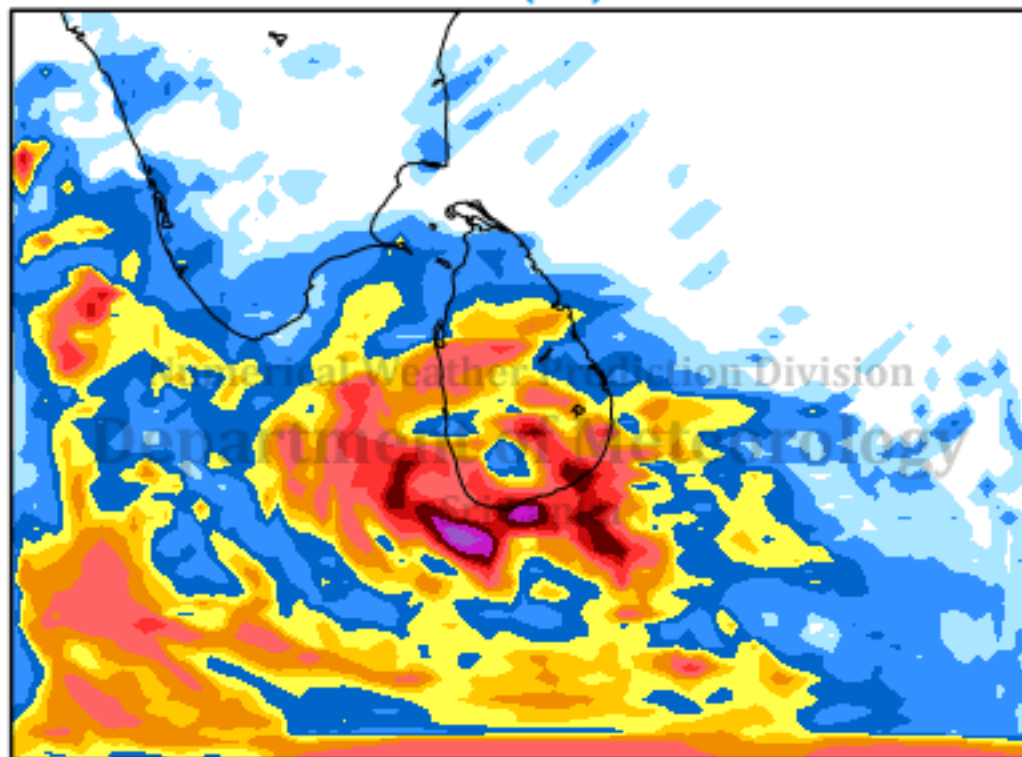
# RAINFALL (mm) & MAX. 2m TEMPERATURE (°C) FORECAST (24h)

Valid for 24 hours ending at 03 UTC of 10 NOV 2018

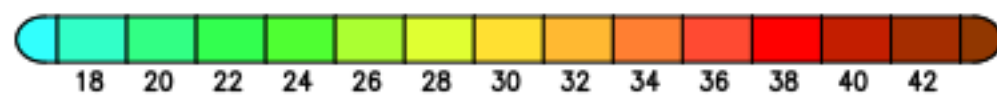
(Based on model (15km) initialized at 00 UTC 09 NOV 2018)

Rainfall (mm)

Max. 2m Temp. (°C)



mm



°C

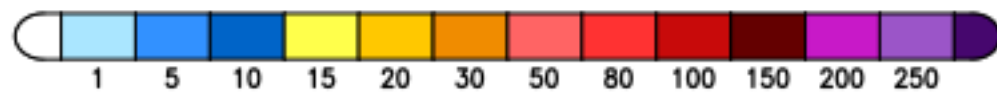
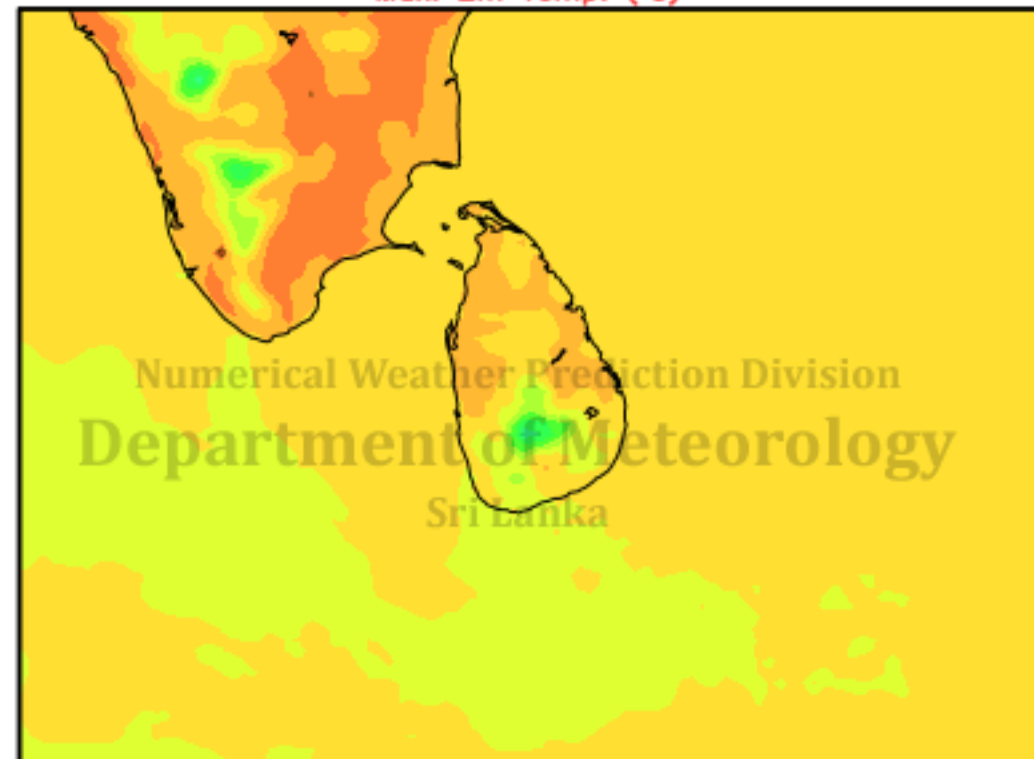
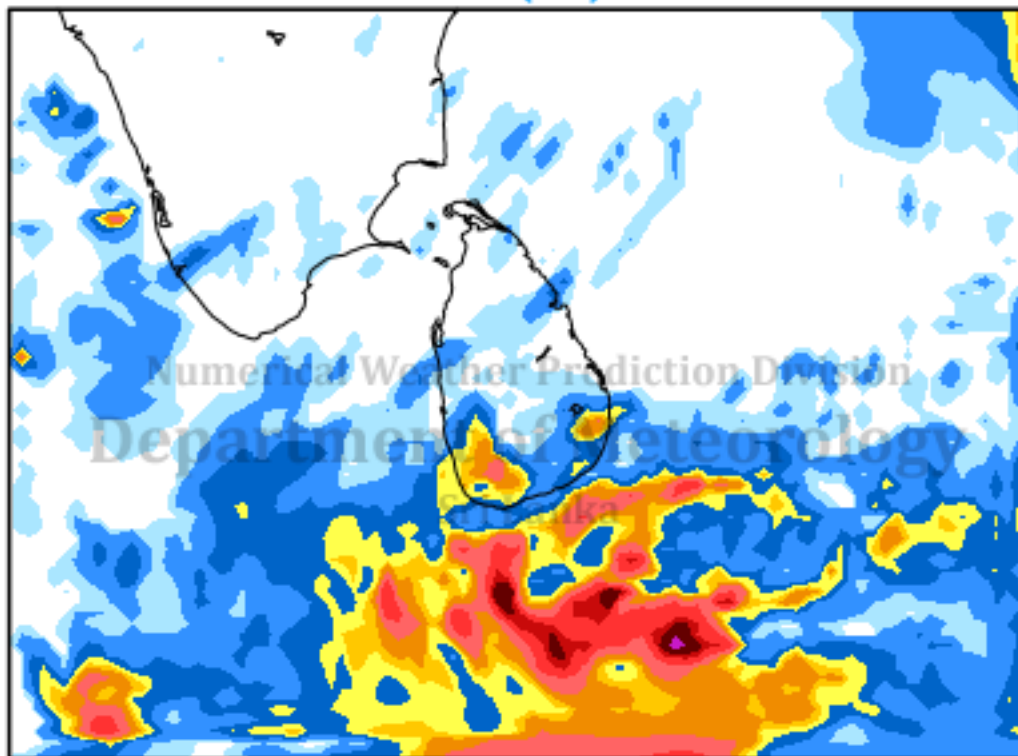
# RAINFALL (mm) & MAX. 2m TEMPERATURE (°C) FORECAST (24h)

Valid for 24 hours ending at 03 UTC of 11 NOV 2018

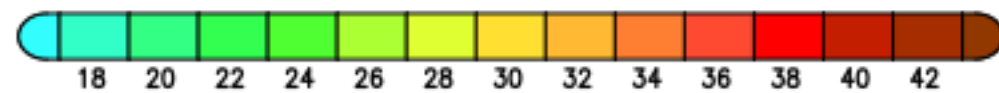
(Based on model (15km) initialized at 00 UTC 09 NOV 2018)

Rainfall (mm)

Max. 2m Temp. (°C)



mm



°C

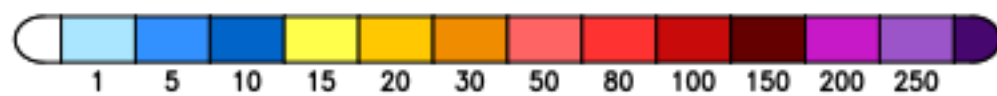
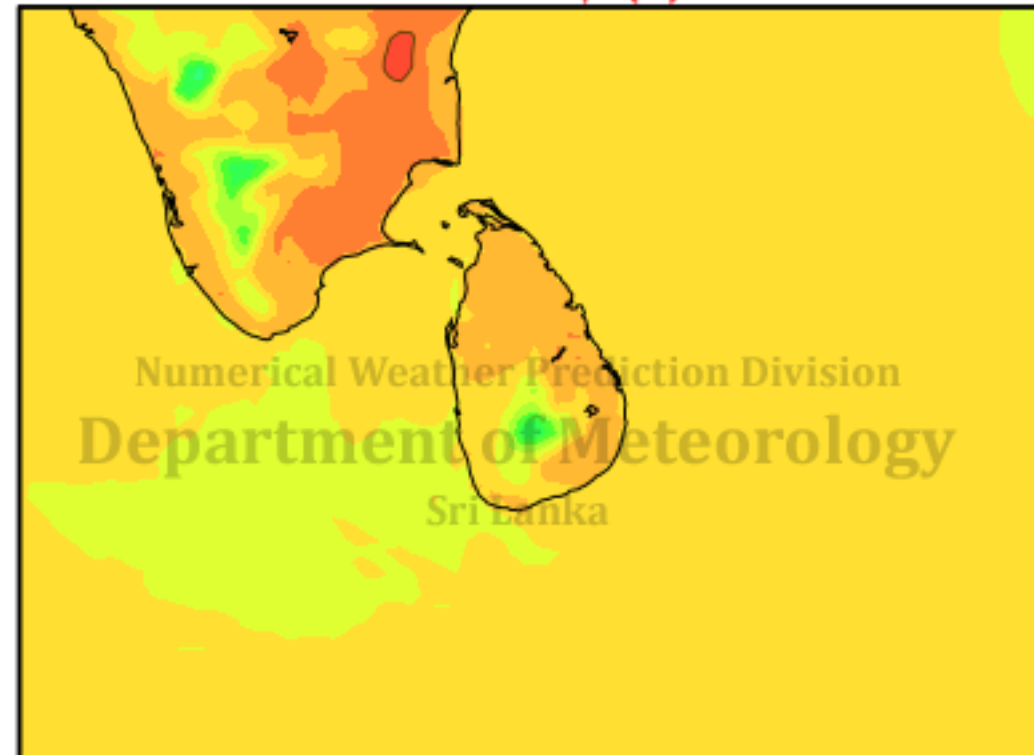
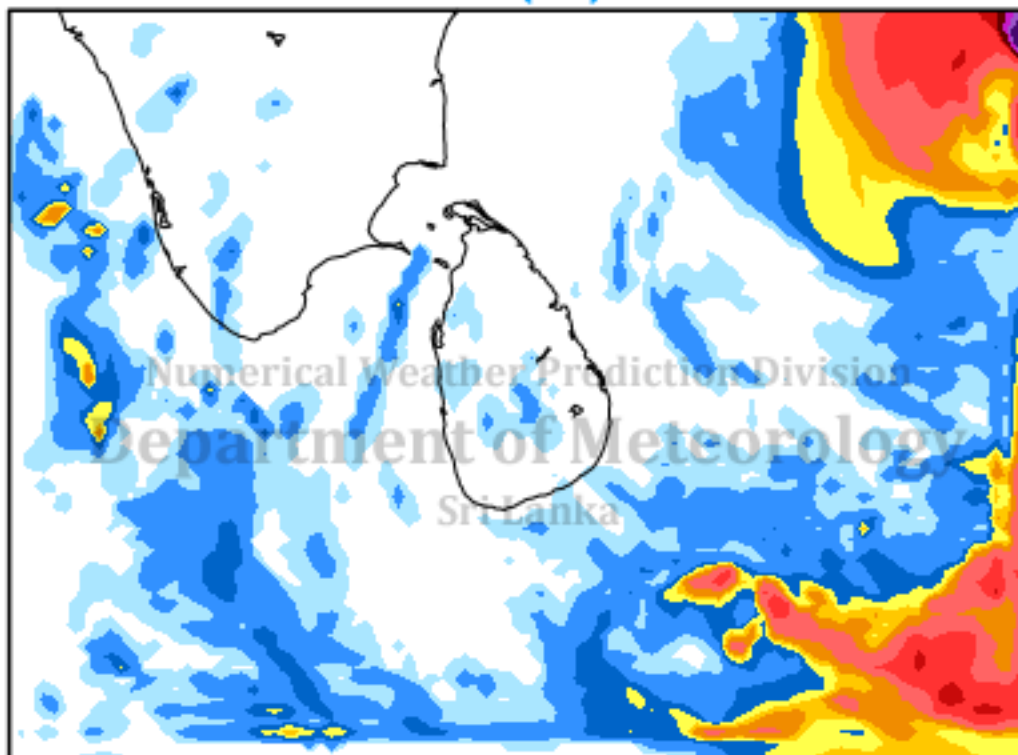
# RAINFALL (mm) & MAX. 2m TEMPERATURE (°C) FORECAST (24h)

Valid for 24 hours ending at 03 UTC of 12 NOV 2018

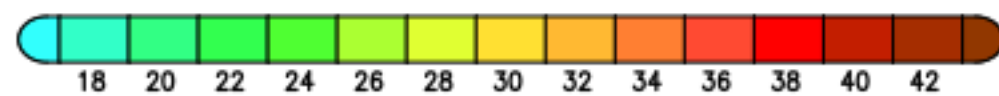
(Based on model (15km) initialized at 00 UTC 09 NOV 2018)

Rainfall (mm)

Max. 2m Temp. (°C)



mm



°C

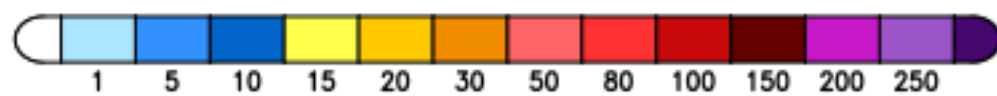
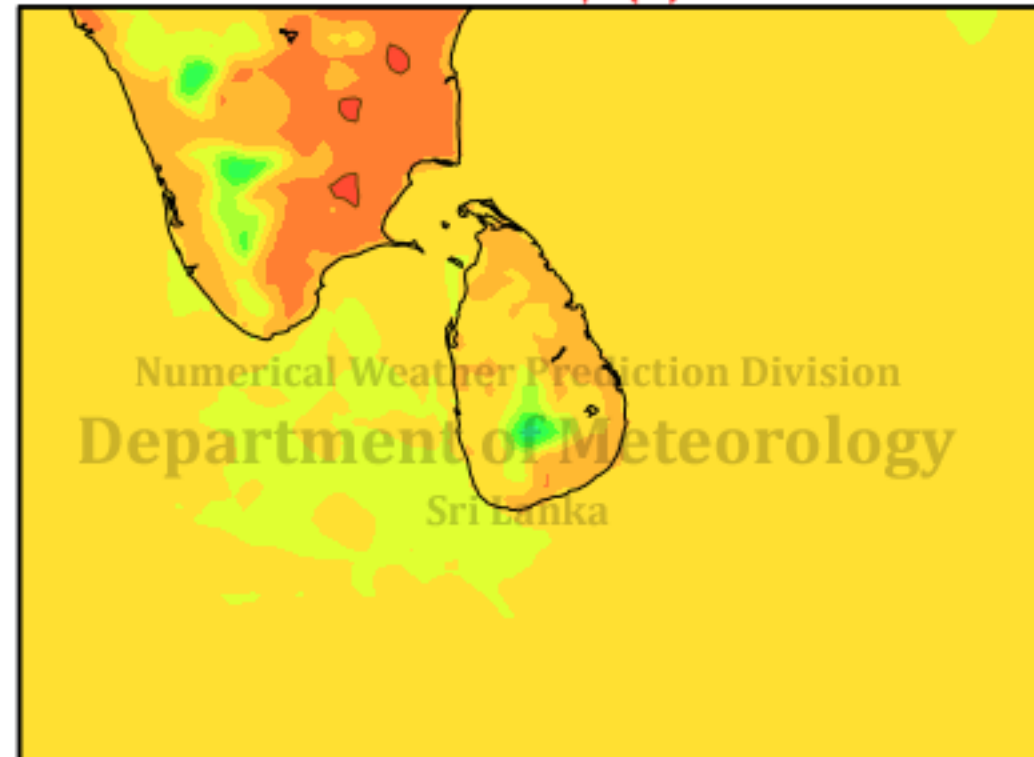
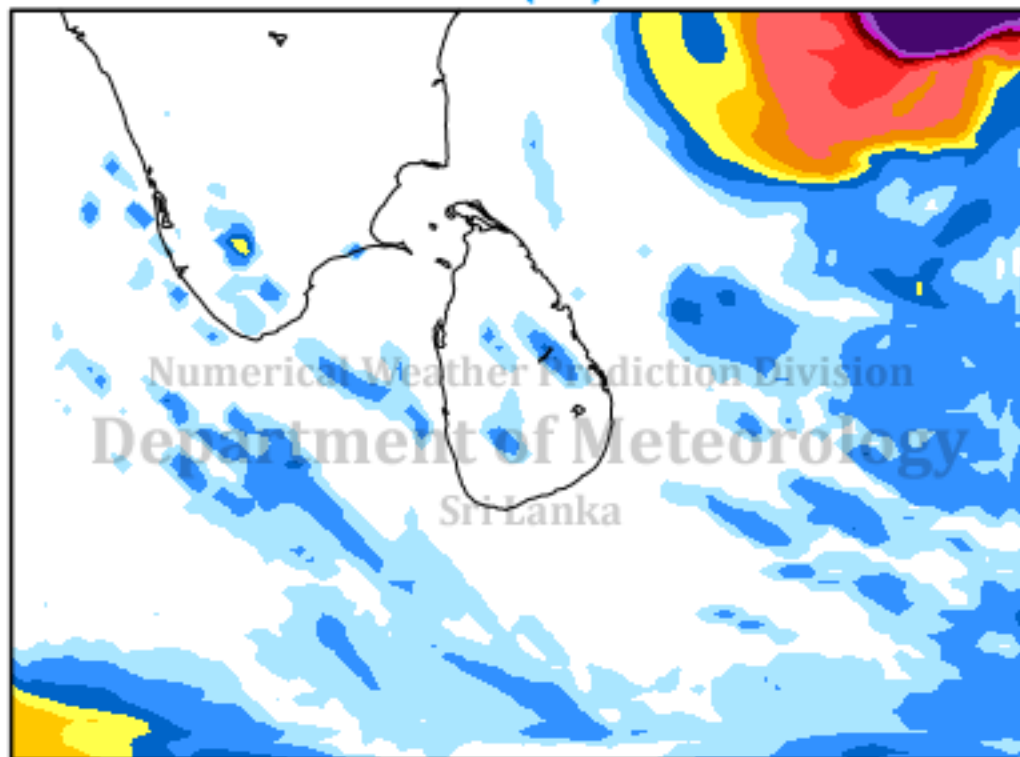
# RAINFALL (mm) & MAX. 2m TEMPERATURE (°C) FORECAST (24h)

Valid for 24 hours ending at 03 UTC of 13 NOV 2018

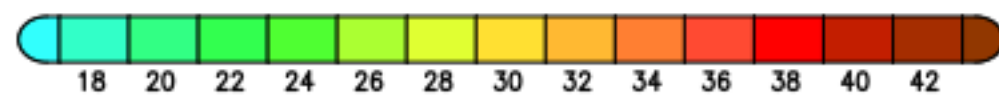
(Based on model (15km) initialized at 00 UTC 09 NOV 2018)

Rainfall (mm)

Max. 2m Temp. (°C)



mm



°C