

15-21 June 2019

1. Rainfall

South-west monsoon conditions prevailed during the week and it caused to occur showers in the south-western part of the country in this week, and also showers or thunder showers were reported from few places in Uva province and in Batticaloa district on 16th June. Generally, mainly fair weather has been reported from elsewhere in this week.

Weekly total rainfall was in the range of 100-250 mm at some areas as Castlereigh, Norton, Canyon, Lakshapana, Kotmale, and Kukuleganaga in Hydro-Catchment areas and Moraliya Oya, Ilubuluwa Estate, Batuwangala, Guruluwana in the other areas.

The highest daily recorded rainfall values were relatively high in last three days of the week and the highest values of daily recorded was 84.0 mm at Canyon area in Nuwara-Eliya district on 20th of June.

Figure 1 illustrates weekly total rainfall distribution while Figure 2 shows daily rainfall distributions.

TOTAL RAINFALL FROM 15TH TO 21ST JUNE 2019

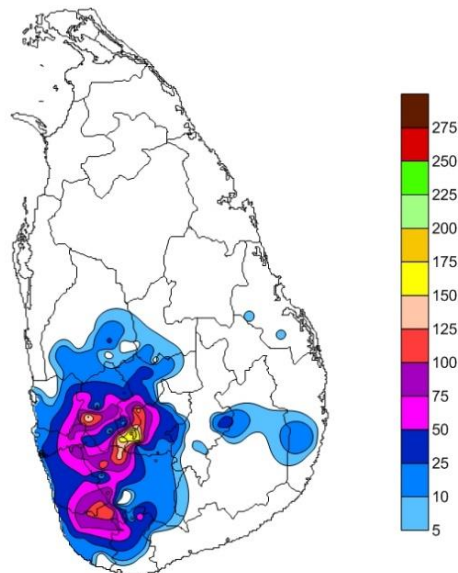


Figure 1: Total rainfall (mm) during the week

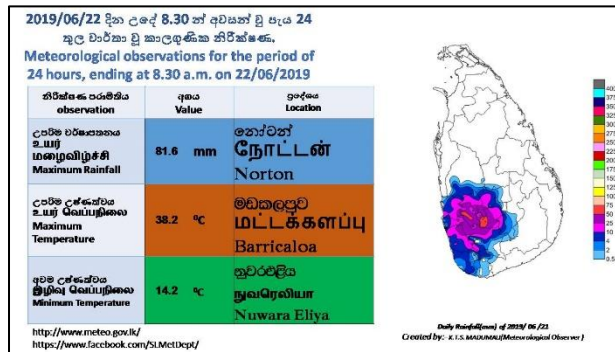
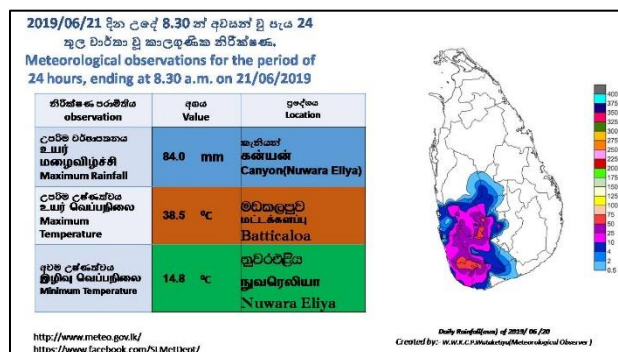
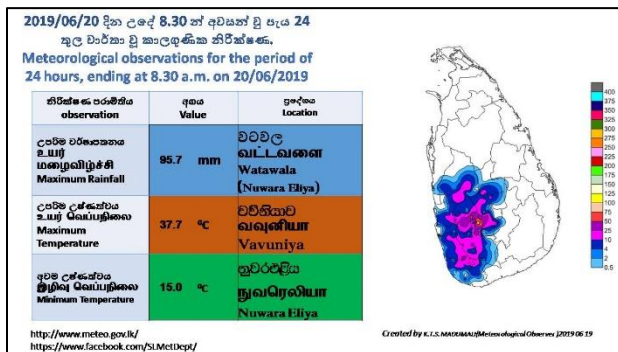
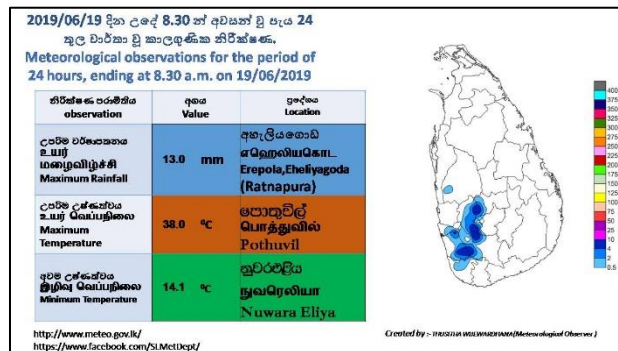
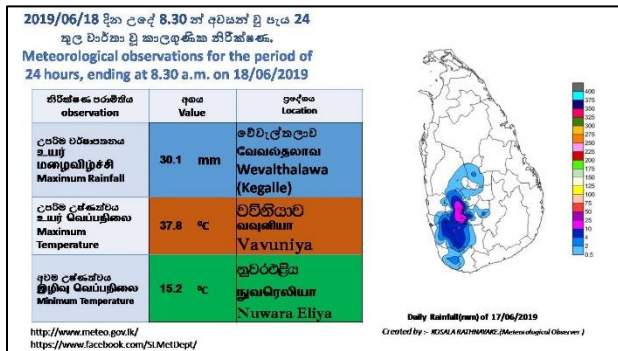
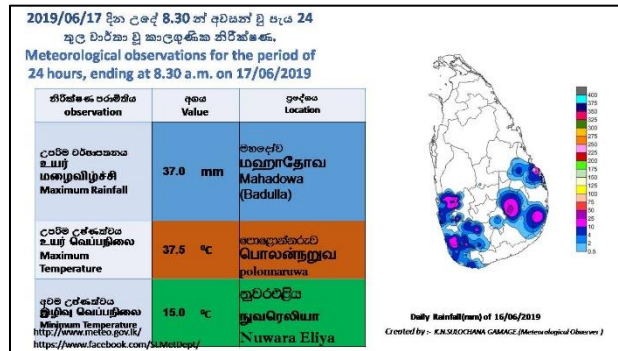
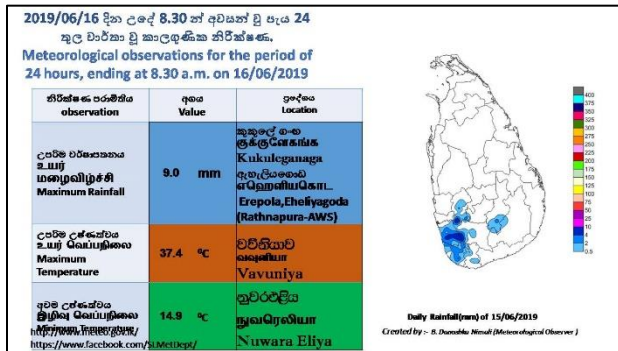


Figure 2. Daily Rainfall (mm) and maximum and minimum temperatures (0C) during the week.

Main Meteorological Stations	Rainfall (mm)
Anuradhapura	0.0
Badulla	2.1
Bandarawela	9.2
Batticaloa	6.5
Colombo	7.3
Galle	13.8
Hambanthota	1.0
Jaffna	0.0
Monaragala	0.0
Katugasthota	40.5
Katunayake	12.1
Kurunagala	2.5
Maha Illuppallama	0.0
Mannar	0.0
Polonnaruwa	0.0
Nuwara Eliya	31.2
Pothuvil	0.0
Puttalam	0.1
Rathmalana	10.4
Rathnapura	95.8
Trincomalee	0.0
Vavuniya	0.0
Mattla	0.4

Hydro-Catchment Areas	
Station	Rainfall (mm)
Castlereigh	155.9
Norton	214.5
Maussakele	98.3
Canyon	184.1
Lakshapana	157.1
Upper Kotmale	62.3
Kotmale	135.8
Victoriya	1.0
Randenigala	0.0
Rantambe	0.0
Bowatenna	4.5
Ukuwela	10.6
Samanala Wawa	4.0
Kukuleganaga	106.0
Maskeliya	11.2

Other Rainfall Stations	
Station	Rainfall (mm)
Moraliya Oya	136.5
Ilubuluwa Estate	121.0
Batuwangala	120.6
Guruluwana	116.4
Kotagala Rosita	98.4
Labugama	92.1
Maliboda	86.7
Padukka	76.7
Kuttapitiya Tea	75.3
Undugoda	71.7

Table-01 Total Rainfall (mm) at Main Meteorological stations, hydro catchment areas and other rainfall stations during the week.

2. Temperature

In this week, the highest day time (maximum) temperatures values were reported at Vavuniya, Batticaloa, Polonnaruwa and Pothuvil meteorological stations.

Highest value of maximum temperature was, 38.2 °C reported at Batticaloa main meteorological station on 21st of June and the lowest minimum temperature was 14.1 °C reported at Nuwara-Eliya station on 18th of June.

Day time temperature were mainly above average at most stations except Batticaloa which was around 1°C below normal on 15th June. But day time temperature getting increase in Batticaloa at the end of this week it was around 5°C above normal on 20th of June. Day time temperature were predominantly above or about normal elsewhere during the week except Rathnapura 21st and Batticaloa 15th when they were below normal due to prevailed cloudy and rainy conditions.

Minimum temperatures were predominantly above normal during the week over most parts of the island except Batticaloa where it was 2°C below normal on 16th of June. It was around 4°C degrees above normal at Rathmalana on 16th, 17th, 18th and 19th of June.

3. Wind

Surface wind was mainly South westerly in direction and speed was (10-30) kmph.

But there was Strong gusty winds up to (50-60) kmph in Western, Central, Sabaragamuwa, Southern, Uva and Northwestern province and in western coastal areas and fairly strong winds also reported from Northcentral and Eastern provinces in last two days of the week.

Winds over lower atmosphere, up to 1000 m were mainly west south-westerly in direction during the week and wind speed was (05-45) knots.

Upper winds at 850hPa:

Observed

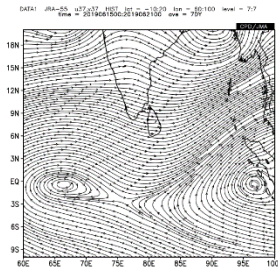


Figure 3.1; Observed wind pattern

Climatology

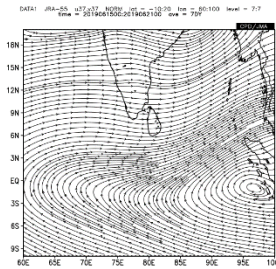


Figure 3.1; Climatology wind pattern

Anomaly

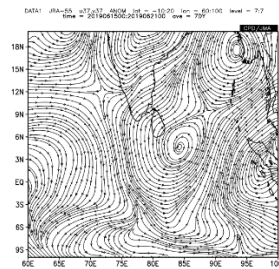


Figure 3.1; Anomaly wind pattern

Upper winds at 850hPa:

Wind direction over 850 hPa pressure level was westerly in direction and the speed was less strong than the climatology. (05-25) kts during the week. There was cyclonic wind anomaly to the south-east of the island (Figure 3.1, 3.2 and 3.3)

Upper winds at 700hPa:

Observed

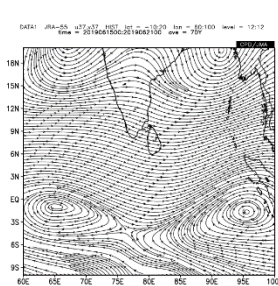


Figure 4.1; Observed wind pattern

Climatology

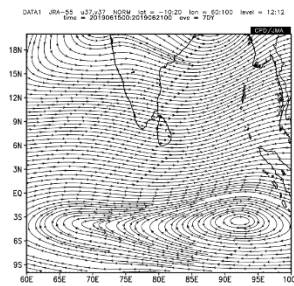


Figure 4.1; Climatology wind pattern

Anomaly

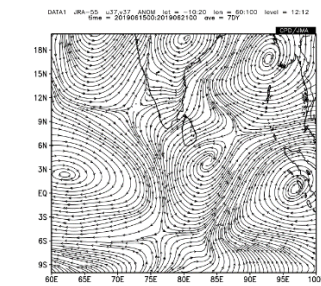


Figure 4.1; Anomaly wind pattern

Winds over 700 hPa level were mostly west North-westerly direction and the speed were less strong than the climatology. But it was more westerly in direction in the climatology. There was cyclonic wind anomaly to the south-east of the island in 700 hPa level too. (Fig 4.1, 4.2 and 4.3).

5. Special notes;

A lightning casualty was reported from Batticaloa on 16th June, and the other person was injured in the same incident.

There was sea water inundation in coastal areas in Induruva area and some places in south western coast in 20th june.

Urban flash flood was reported from Navalapitiya town area on 21st day.

The weather warnings were issued for rough seas and high winds in sea areas extending from Puttalam to Hambantota via Colombo and Galle as speed was increased up to 70 kmph in 20th and 21st days.