

Weekly Weather Summery

1-7 June 2019

1. Rainfall

Pre monsoon conditions continued during the week with morning showers or thunder showers in south western part and afternoon thundershowers in Uva province and in Batticaloa and Ampara districts. Heavy showers occurred from 3rd onwards in south western part and moderate showers or thundershowers were prevailed in Uva province and in Batticaloa and Ampara districts. There was no rainfall reported from Northern and North-central provinces.

The pressure gradient between Colombo and Trincomalee and southwesterly wind flow up to 500hpa level, which are the main component of the onset criteria of SW monsoon, was not seen until end of the week across the country. Mostly pressure gradient was prevailing below 2.6 hPa except 02nd June.

The highest daily recorded rainfall was 165.4 mm at Vogan estate in Kalutara district on 03rd of June.

In the case of hydro catchments areas, rainy weather prevailed over most catchment areas in the southwestern slopes and no significant rainfalls in Randenigala, Rantambe and Samanala Wawa catchments. The highest weekly total rainfall of catchments area was 178.0 mm recorded at Kukuleganga.

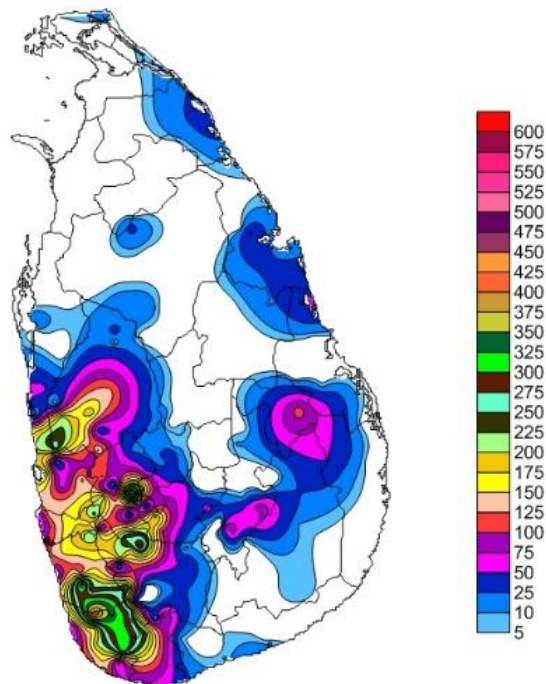
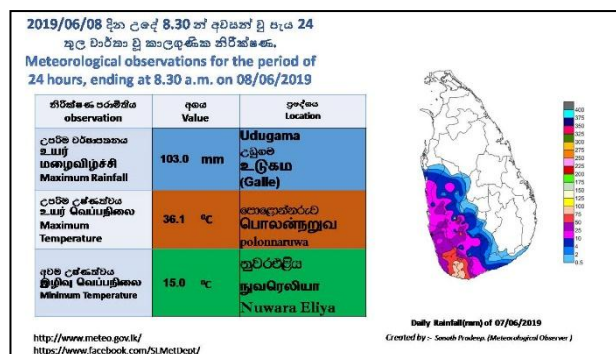
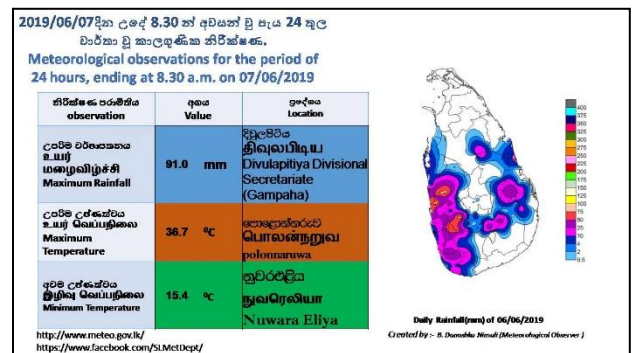
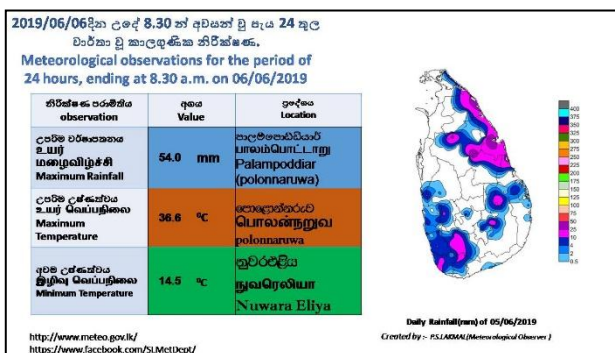
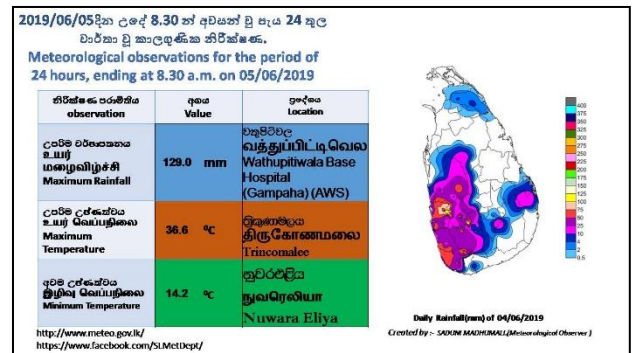
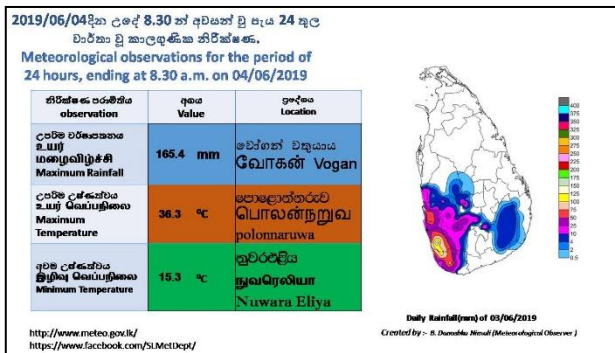
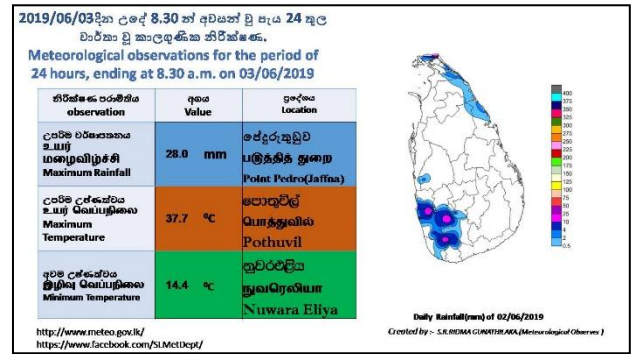
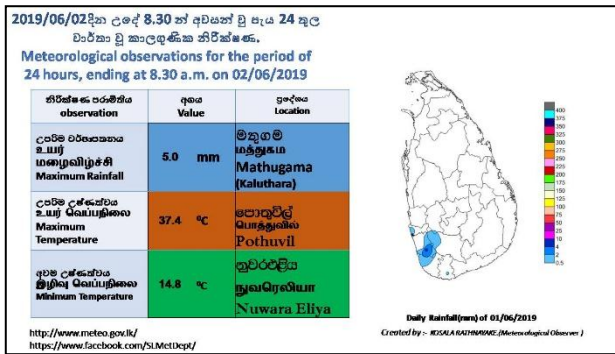


Figure 1: Total rainfall (mm) during the week

Figure 2. Daily Rainfall (mm) and maximum and minimum temperatures (⁰C) during the week



Main Meteorological Stations	Rainfall (mm)
Anuradhapura	0
Badulla	27
Bandarawela	52.1
Batticaloa	0.2
Colombo	46.6
Galle	93.9
Hambanthota	14.1
Jaffna	0
Monaragala	8.9
Katugasthota	4.9
Katunayake	151.6
Kurunagala	59
Maha Illuppallama	20.9
Mannar	0
Polonnaruwa	0
Nuwara Eliya	22.8
Pothuvil	0
Puttalam	12.7
Rathmalana	78.3
Rathnapura	124.7
Trincomalee	6.6
Vavuniya	0.6
Mattla	1.2

Hydro-Catchment Areas	
Station	Rainfall (mm)
Castlereigh	115.3
Norton	171.7
Maussakele	113.4
Canyon	161.3
Lakshapana	142.2
Upper Kotmale	58.6
Kotmale	53.2
Victoriya	1.2
Randenigala	0.0
Rantambe	0.0
Bowatenna	1.8
Ukuwela	8.4
Samanala Wawa	0.0
Kukuleganaga	178.0
Maskeliya	83.0

Other Meteorological Stations	
Station	Rainfall (mm)
Sri Palabaddala	325.5
Kanneliya Forest Office	263.0
Yattapatha School	258.5
Upper Stockland Estate	256.0
District Hospital, Meegahatenna	250.0
Ivy Hills Tea Factory	250.0
Divulapitiya Divisional Secretariate	246.0
New Marakanda Tea Factory	226.0
Kudawa	225.5
Erepola, Eheliyagoda	208.5
Pimbura Hospital	208.5
Vogan Estate	206.5
Ransavi Tea Factory	201.5
Kandal Oya Estate	193.0
Athuraliya DS Office	191.0
Agrarian Service Centre, Akuressa	187.5
Belmont Tea Factory	187.5
Gurudiyapotha Tea Factory	187.0
Devagiri Tea Factory	185.5
Duli Ella Tea Factory	184.5
Kalupahana Estate	178.5

Table-01 Total Rainfall (mm) at Meteorological stations and hydro catchment areas during the week.

2. Temperature

The highest day time (maximum) temperature, 37.7⁰C, was reported at Pottuvil meteorological station on 02nd and the lowest minimum temperature was 14.2⁰C reported at Nuwara-Eliya meteorological station on 04th of June.

Day time temperatures were mainly above average at most stations except at Batticalo. It was about 4⁰C above average at meteorological stations in Katugastota during 1-2nd, at Jaffna on 04th and at Nuwara Eliya on 06th.

Minimum temperatures were mostly above normal during the week except at Rathnapura, where it was about or near normal during the week. Minimum temperatures were approximately 04⁰C above normal at Ratmalana during on 2nd.

3. Wind

Surface wind was mainly south westerly in direction and speed was (10-20)kts.

Upper winds at 850hPa: Wind direction over 850 hPa pressure level was South-westerly direction and the speed was less strong than the climatology. The wind speed was reported as (10-30) knots during the week. (Figure 3.1, 3.2 and 3.3) Normal southern hemispheric wind from Madagascar area was not seen. (Figure 3.1, 3.2 and 3.3)

Observed

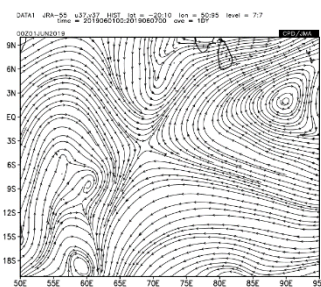


Figure 3.1

Climatology

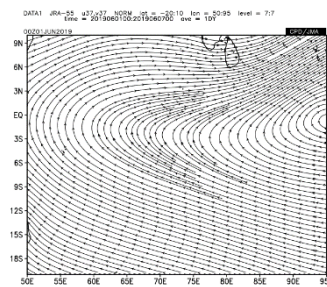


Figure 3.2

Anomaly

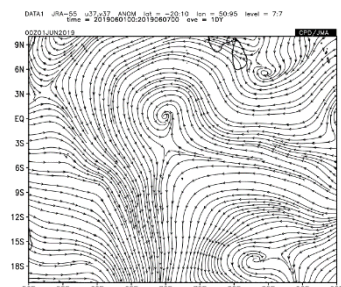


Figure 3.3

Upper winds at 700hPa: Winds over 700hPa level were mostly North-easterly to North-westerly direction and a SW-NE oriented trough axis prevailed over the island. The wind speed was within 10-15 kts. The wind speed was less strong than the climatology and there was a north-easterly wind anomaly over Sri Lanka. (fig 4.1, 4.2 and 4.3).

Observed

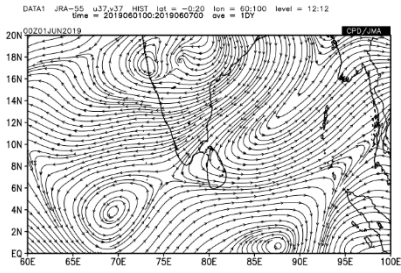


Figure 4.1

Climatology

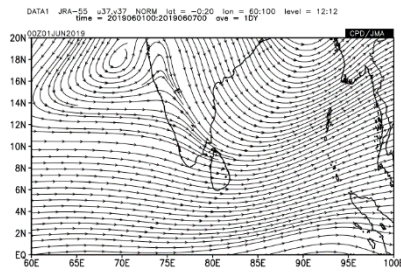


Figure 4.2

Anomaly

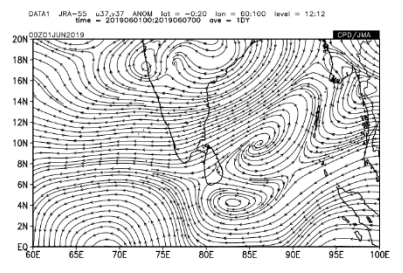


Figure 4.3