

Weekly Weather Summery

15-21 September 2019

1. Rainfall

The week began with the weakening monsoon conditions as gradually monsoon conditions were decreased and inter-monsoon condition was getting established over the country. Though this week was wet week for southwestern part of the country with heavy rainfalls, less rainfalls or mainly fair weather reported from other parts.

Department has issued thunderstorm warnings in on all days in the week. Very strong windy conditions associated with thundershowers were reported from Pannala area and more than 20 shops have been completely destroyed on 16th afternoon with more than 100 small shops were damage. A death was reported due to lightning attack on the 19th day.

Weekly total rainfall was considerably high and it was recorded in the range of 200-300 mm at some areas as Batuwangala, Hiniduma, Aranayak, Padukka, Mapalana, Port Authority, Karagala, Kalatuwawa, Hanwella and Baddegama areas and Kukuleganaga in Hydro-Catchment areas. It was in the range of 100-200 mm range in the other Hydro-Catchment areas as Castlereigh, Norton, Maussakele, Canyon, Lakshapana, Kotmale and Maskeliya and in other areas as Colombo, Galle, Hambanthota, Katunayake, Rathmalana and Rathnapura.

The highest daily recorded rainfall was 192.0 mm at in Nuwara-eliya on the 15th day.

Figure 1 illustrates weekly total rainfall distribution while figure 2 shows daily rainfall distributions.

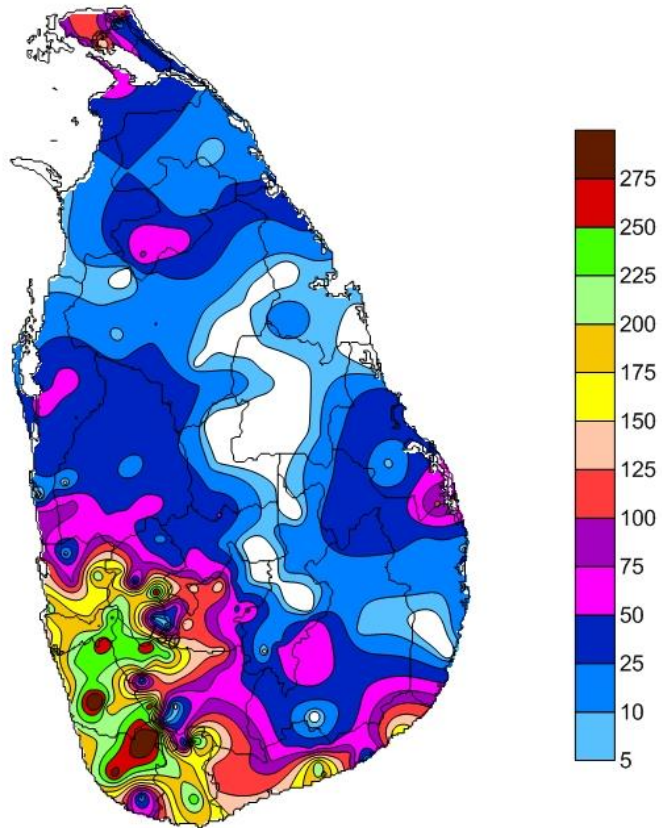


Figure 1: Total rainfall (mm) during the week

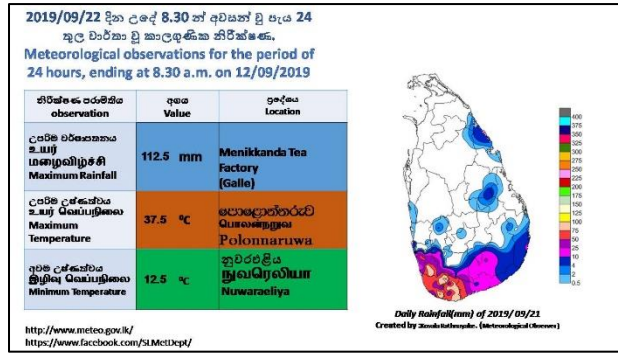
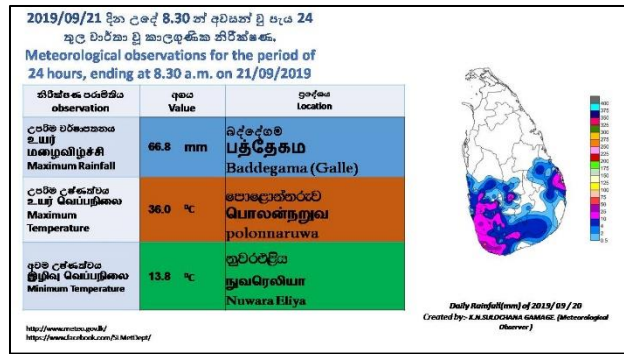
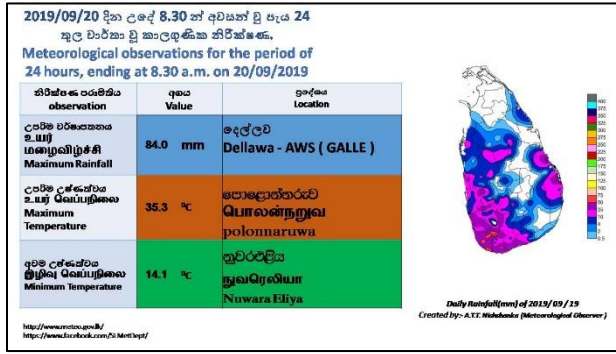
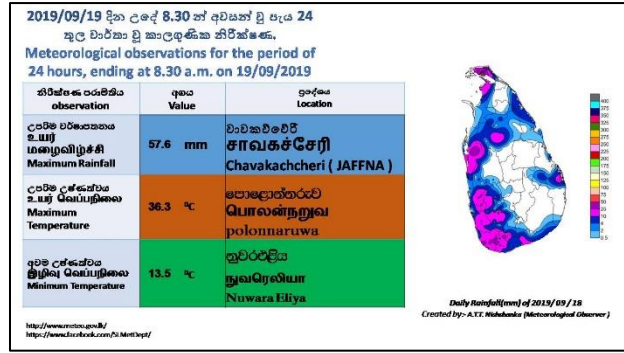
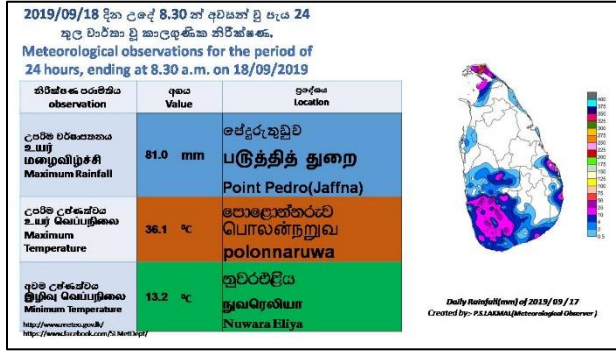
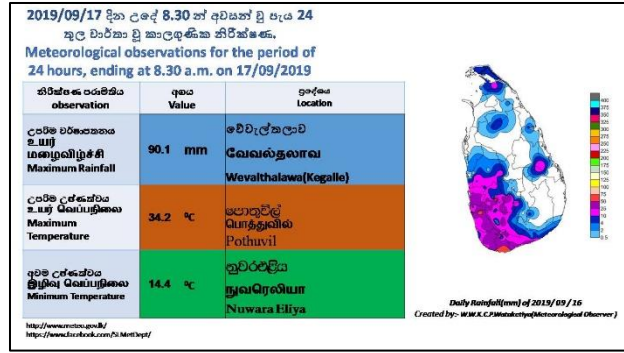
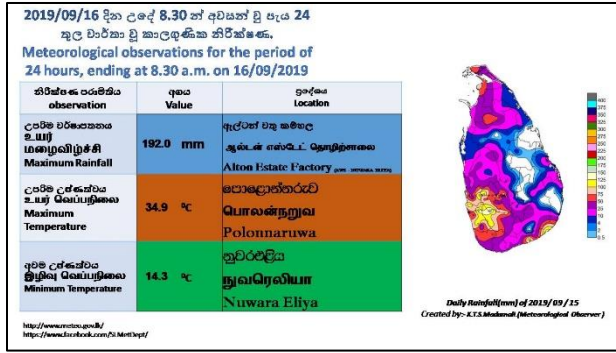


Figure 2. Daily Rainfall (mm) and maximum and minimum temperatures (0C) during the week.

Main Meteorological Stations	Rainfall (mm)
Anuradhapura	26.2
Badulla	5.0
Bandarawela	41.9
Batticaloa	41.0
Colombo	138.2
Galle	170.0
Hambanthota	149.7
Jaffna	70.8
Monaragala	37.1
Katugasthota	53.5
Katunayake	105.0
Kurunagala	53.4
Maha Illuppallama	22.9
Mannar	2.5
Polonnaruwa	7.8
Nuwara Eliya	37.2
Pothuvil	17.7
Puttalam	54.1
Rathmalana	142.3
Rathnapura	162.1
Trincomalee	9.0
Vavuniya	61.4
Mattla	46.4

Hydro-Catchment Areas	
Station	Rainfall (mm)
Castlereigh	111.7
Norton	123.6
Maussakele	103.0
Canyon	133.9
Lakshapana	150.2
Upper Kotmale	79.7
Kotmale	133.7
Victoriya	8.8
Randenigala	1.6
Rantambe	0.0
Bowatenna	6.8
Ukuwela	40.6
Samanala Wawa	38.5
Kukuleganaga	272.0
Maskeliya	124.9

Other Rainfall Stations	
Station	Rainfall (mm)
Batuwangala	297.4
Hiniduma	296.8
Aranayak	292.2
Padukka	256.4
Mapalana	245.2
Port Authority	239.5
Karagala	231.0
Kalatuwawa	217.9
Hanwella	216.2
Baddegama	206.3

Table-01 Total Rainfall (mm) at Main Meteorological stations, hydro catchment areas and other rainfall stations during the week.

2. Temperature

The highest day time (maximum) temperatures values were reported at Polonnaruva (it was highest in the 21st day as 37.5^oC) except the 16th day as it was reported from Pothuvil meteorological station.

Minimum temperature values were reported from Nuwara-Eliya meteorological station all over the week and the lowest minimum temperature was 12.5 reported at on 21st day.

Day time temperature were mainly below average at most stations, it was 04^oC below normal at Badulla and 03^oC below normal, Rathnapura and Vavuniya at Meteorological stations on 16th day and Anuradhapura and Maha-iluppallama Meteorological stations on 19th day.

Minimum temperatures were 3^oC below normal at Jaffna Meteorological stations at 16th to 19th days. There was no considerable changes in all other Meteorological stations.

3. Wind

Westerly to South-westerly and wind speed was (10-30) kmph.

Winds over lower atmosphere, up to 1000 m were mainly west to south-westerly in direction during the week and wind speed was (10-30) knots.

Upper winds at 850hPa:

Observed

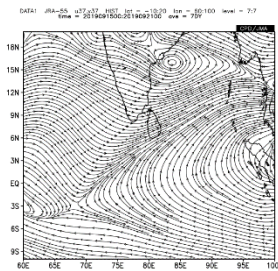


Figure 3.1; Observed wind pattern

Climatology

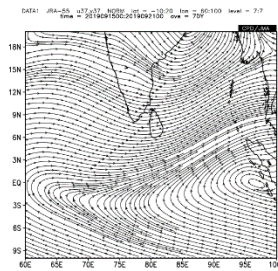


Figure 3.1; Climatology wind pattern

Anomaly

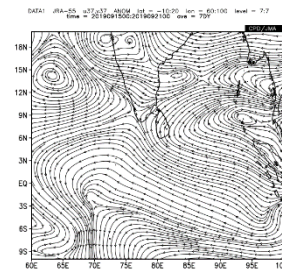


Figure 3.1; Anomaly wind pattern

Upper winds at 850hPa:

Wind direction over 850 hPa pressure level was south-westerly in direction and the speed was stronger than the climatology during the week. (Figure 3.1, 3.2 and 3.3)

Upper winds at 700hPa:

Observed

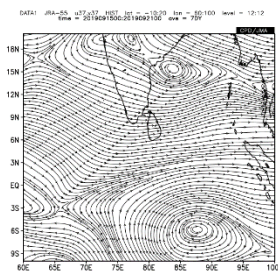


Figure 4.1; Observed wind pattern

Climatology

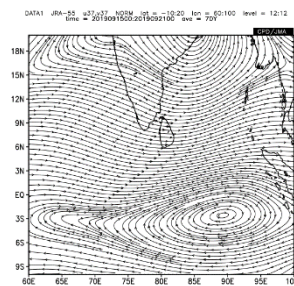


Figure 4.1; Climatology wind pattern

Anomaly

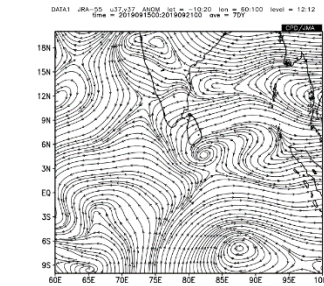


Figure 4.1; Anomaly wind pattern

Winds over 700 hPa level were mostly west westerly direction. There was anti-cyclonic wind anomaly to the south-east of the island in 700 hPa level (Fig 4.1, 4.2 and 4.3).