

Weekly Weather Summery

1-7 February 2019

1. Rainfall

North-East monsoon was active during 3-5 February 2019 due to a wavy type disturbance. It caused significant rainfalls in Eastern, Uva, southern and western provinces with very heavy rainfalls in Eastern on 4th. Fairly heavy rainfall also reported from Northern and Northcentral provinces. Disturbed conditions triggered convective rains in southwestern part of the country. The highest daily recorded was 160.2 mm at Kiran in Batticaloa district on 04th of February. Generally very less rainfalls have been reported from Northwestern province and in Hambanthota district.

Monsoon became weak and as a result there was not much rain towards the end of the week. Figure 1 illustrates weekly total rainfall distribution while figure 2 shows daily rainfall distributions.

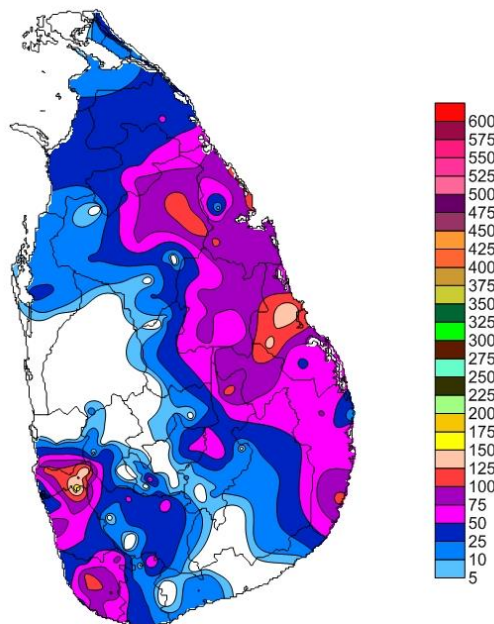


Figure 1: Total rainfall (mm) during the week

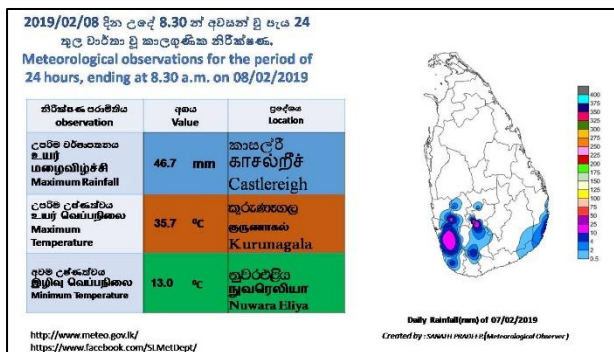
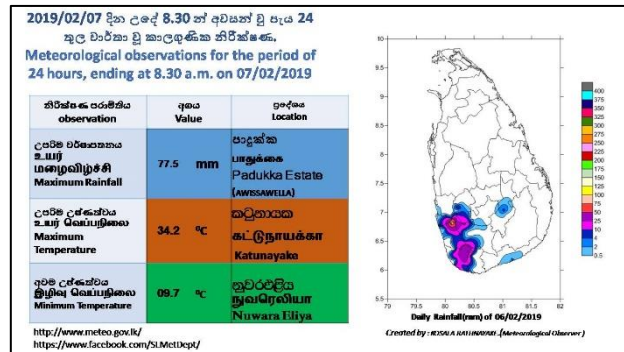
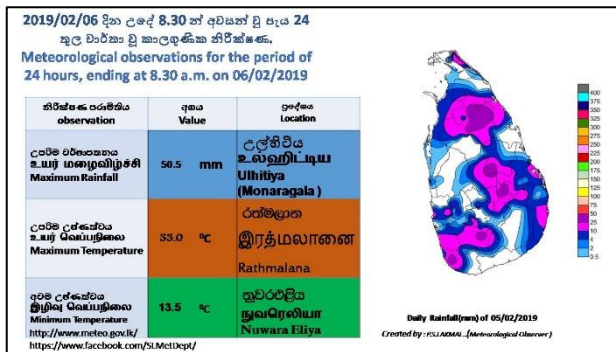
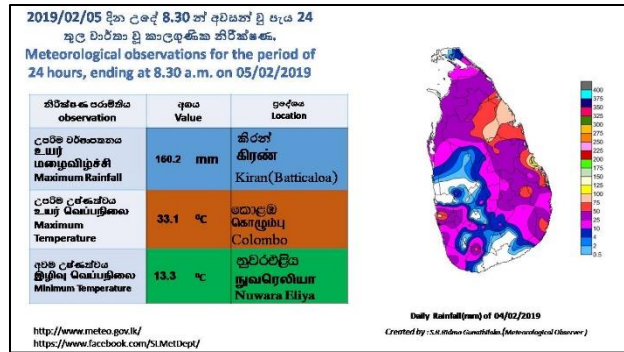
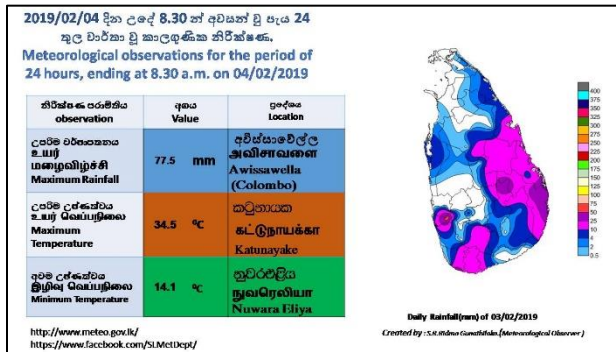
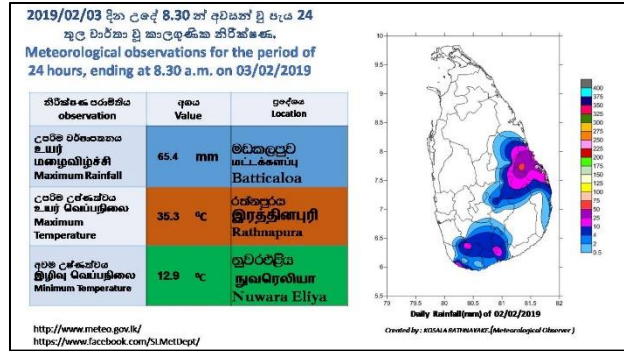
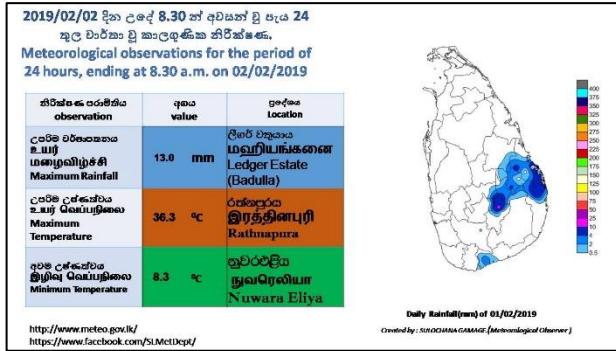


Figure 2. Daily Rainfall (mm) and maximum and minimum temperatures (°C) during the week

Main Meteorological Stations	Rainfall (mm)
Anuradhapura	42.0
Badulla	27.1
Bandarawela	7.9
Batticaloa	133.6
Colombo	73.0
Galle	111.4
Hambanthota	2.9
Jaffna	0.6
Monaragala	19.0
Katugasthota	4.7
Katunayake	0.4
Kurunagala	0.4
Maha Illuppallama	6.4
Mannar	54.2
Polonnaruwa	57.2
Nuwara Eliya	10.3
Pothuvil	80.5
Puttalam	36.0
Rathmalana	12.1
Rathnapura	23.1
Trincomalee	121.7
Vavuniya	84.3
Mattla	0.9

Hydro-Catchment Areas	
Station	Rainfall (mm)
Castlereigh	78.4
Norton	19.0
Maussakele	8.9
Canyon	19.5
Lakshapana	4.9
Upper Kotmale	2.0
Kotmale	3.5
Victoriya	16.7
Randenigala	50.1
Rantambe	51.0
Bowatenna	32.1
Ukuwela	5.3
Samanala Wawa	10.4
Kukuleganaga	18.0
Maskeliya	0.0

Table-01 Total Rainfall (mm) at Main Meteorological stations and hydro catchment areas during the week.

2. Temperature

The highest day time (maximum) temperature, 36.3 °C was reported at Rathnapura main meteorological station and the lowest minimum temperature was 8.3 °C reported at Nuwara-Eliya station on 01st of February.

Day time temperatures at Hambantota and Rathmalana were mostly above normal during the week and it was around 4°C above normal on 1st February. It was predominantly about normal elsewhere during the week except during 4-5th when they were below normal due to prevailed cloudy and rainy conditions.

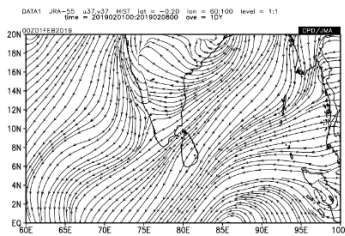
Minimum temperatures were predominantly above normal during the week over most parts of the island. It was around 5°C degrees greater than the average at Nuwara-Eliya on 04th of February.

3. Wind

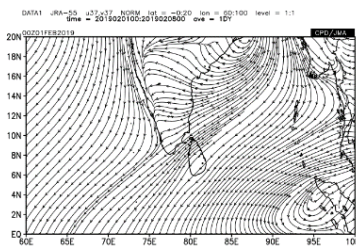
Surface wind was mostly light to moderate and direction was northeasterly. Wind speed strengthened up to 30 knots on 01st and 04th.

Upper winds at 1000hPa: Low level wind flow was mostly similar to climatology during the first week of the February.

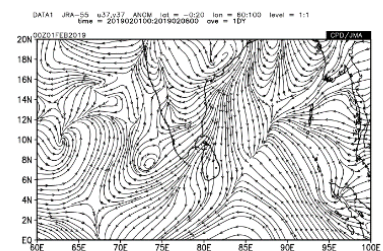
Observed



Climatology

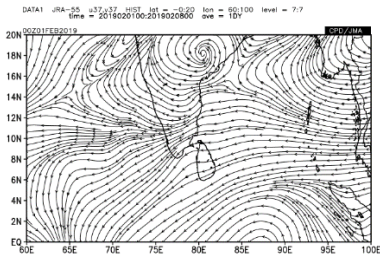


Anomaly

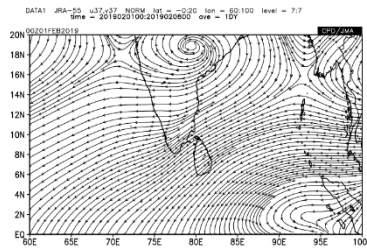


Upper winds at 850hPa: the winds were predominantly East-northeasterly in direction and wind speed were slight to moderate.

Observed



Climatology



Anomaly

