

Weekly Weather Summery

01-07 March 2021

1. Rainfall

Break Northeast monsoon conditions were continued over the country during this week and there was no pressure gradient across the country. Except of a few showers at Trincomalee area afternoon thunder showers were received at southwestern parts in a few days during this week. However, except of last two days of this week, mainly fair weather was prominent in most parts of the country.

Further, light to moderate or moderate rainfall with isolated fairly heavy or heavy afternoon thunder showers had been reported at Western, Southern, Central and Uva provinces and in the Kurunegala district on 06th. Light to moderate scattered afternoon thunder showers had been reported from Central, Sabaragamuwa and Northwestern provinces and in the Galle and Mathara districts on 07th as well.

Light or light to moderate showers had been reported from hydro catchment areas on last three days of this week. Mainly fair weather was prevailed in remaining days of the week at hydro catchment areas.

Highest daily (24 hour) rainfall, 108.9 mm was reported from Madulkale (Kandy district) on 06th March. Highest weekly total rainfall, 141.0 mm was reported from Baddegama rain gauge during this week.

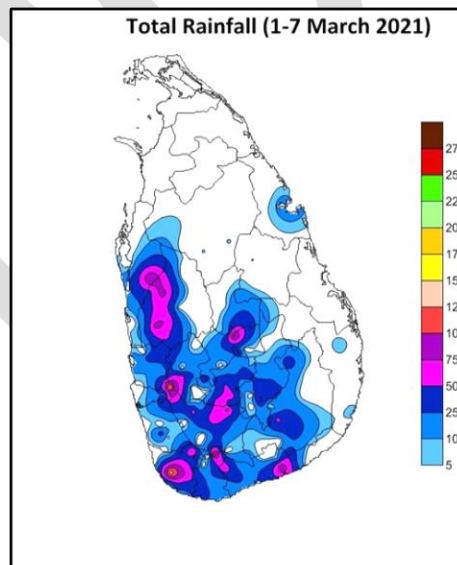
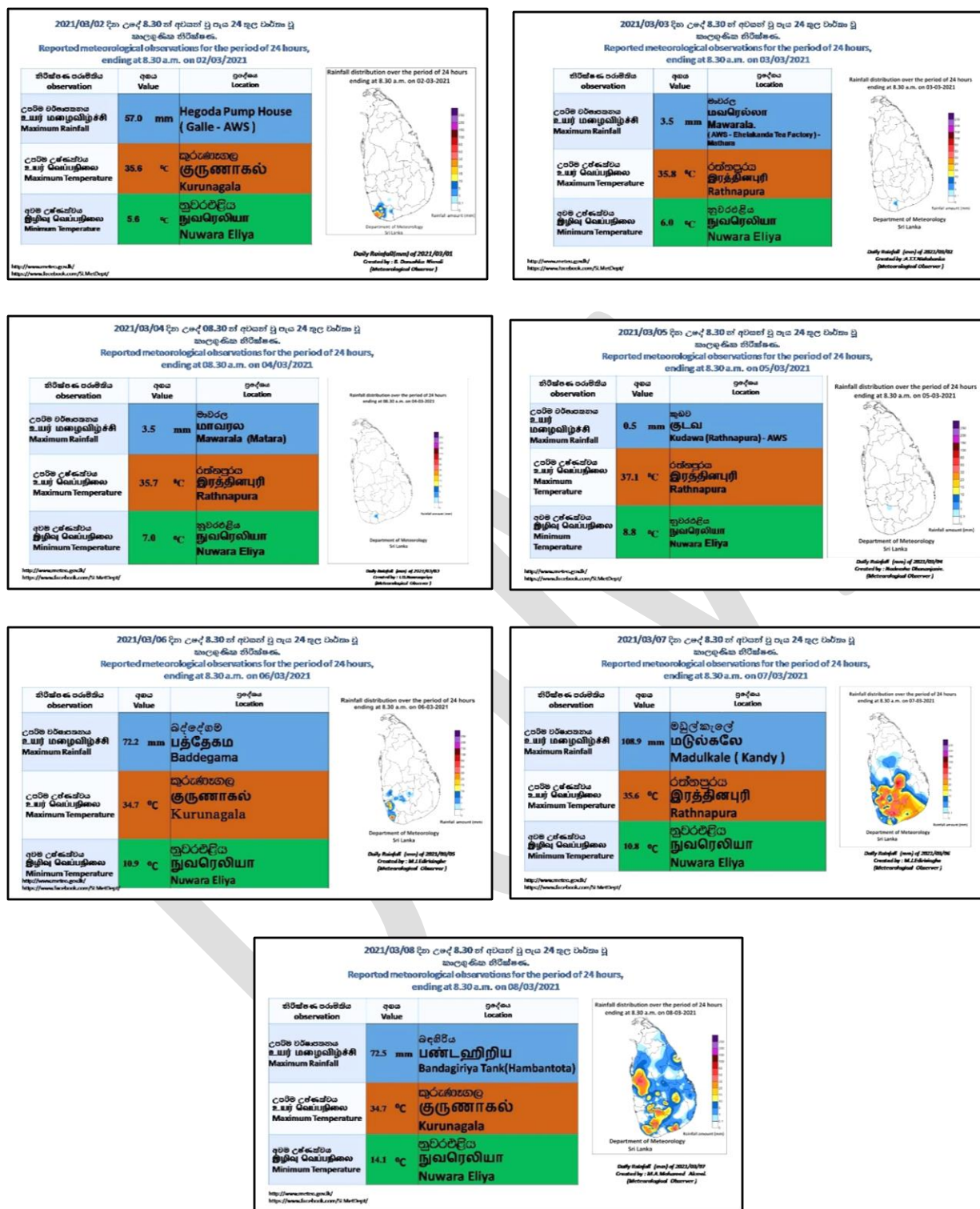


Figure 1: Total rainfall (mm) during the week



Main Meteorological Stations	Rainfall (mm)
Anuradhapura	0.8
Badulla	30.3
Bandarawela	52.8
Batticaloa	2.2
Colombo	2.5
Galle	18.1
Hambanthota	41.0
Jaffna	0
Monaragala	25.5
Katugasthota	26.2
Katunayake	23.3
Kurunagala	10.7
MahaIlluppallama	5.8
Mannar	0
Polonnaruwa	0.1
Nuwara Eliya	26.0
Pothuvil	0
Puttalam	3.0
Rathmalana	4.3
Rathnapura	61.1
Trincomalee	5.9
Vavuniya	0
Mattala	9.4

Hydro-Catchment Areas	
Station	Rainfall (mm)
Castlereigh	37.0
Norton	9.9
Maussakele	27.0
Canyon	14.4
Laksapana	3.2
Upper kotmalee	53.0
Kotmalee	19.3
Victoriya	39.2
Randenigala	9.6
Rantambe	9.5
Bowatenna	2.4
Ukuwela	16.5
Samanala Wewa	29.0
Kukuleganga	19.0
Maskeliya	47.4

Rain Gauge Stations	
Station	Rainfall (mm)
Baddegama	141.0
Deniyaya	120.5
Madulkale	109.5
Elston	124.3
Anamaduwa	101.6
Bandagiriya Tank	99.5
Nikaweratiya	86.3
Detanagalla	83.0
Kuliyapitiya	82.6
Baddegama	141

Table 1: Total weekly Rainfall (mm) at Main Meteorological stations, Hydro-catchment areas and some rain gauge stations during the week.

2. Temperature

2.1 Maximum temperature

The highest day time (maximum) temperature, 37.1 °C was reported from Rathnapura on 04th March (Fig 3.a). Nuwara Eliya was reported its highest maximum temperature 23.4°C, on 06th. Except of a few stations maximum temperature anomaly had been vary in between +2.0°C to -2.0°C during this week (Fig 3.b). Weekly highest positive anomaly of maximum temperature, 3.6°C reported at Hambantota on 07th and weekly lowest negative anomaly of maximum temperature, 3.0°C at Badulla on 05th March.

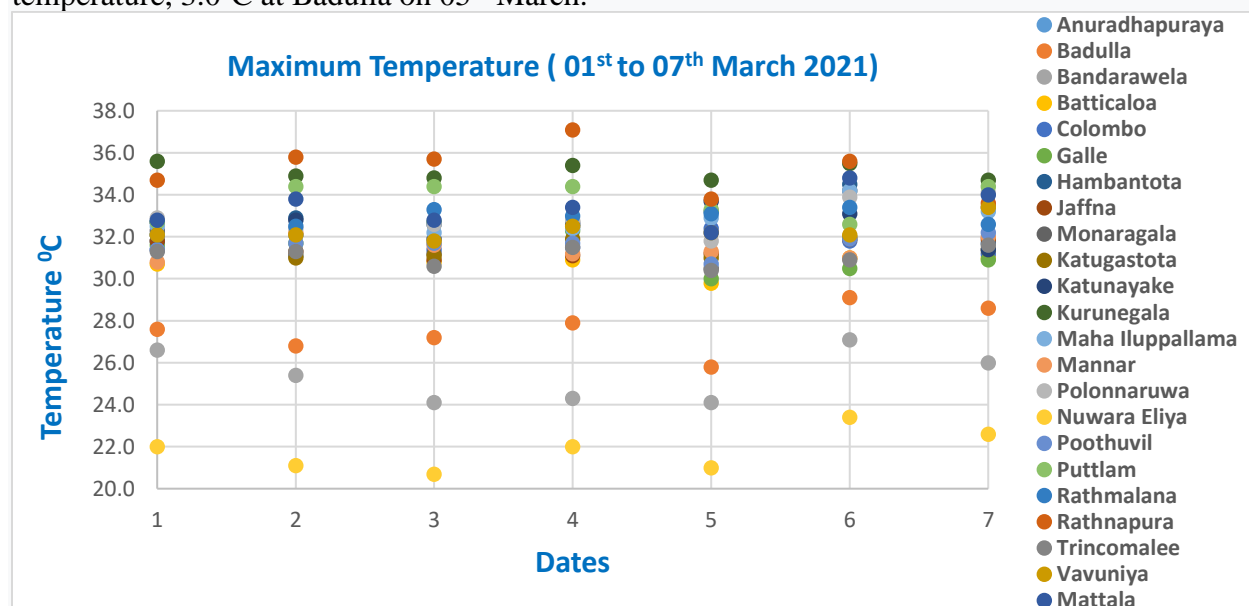


Fig 3.a: maximum temperature

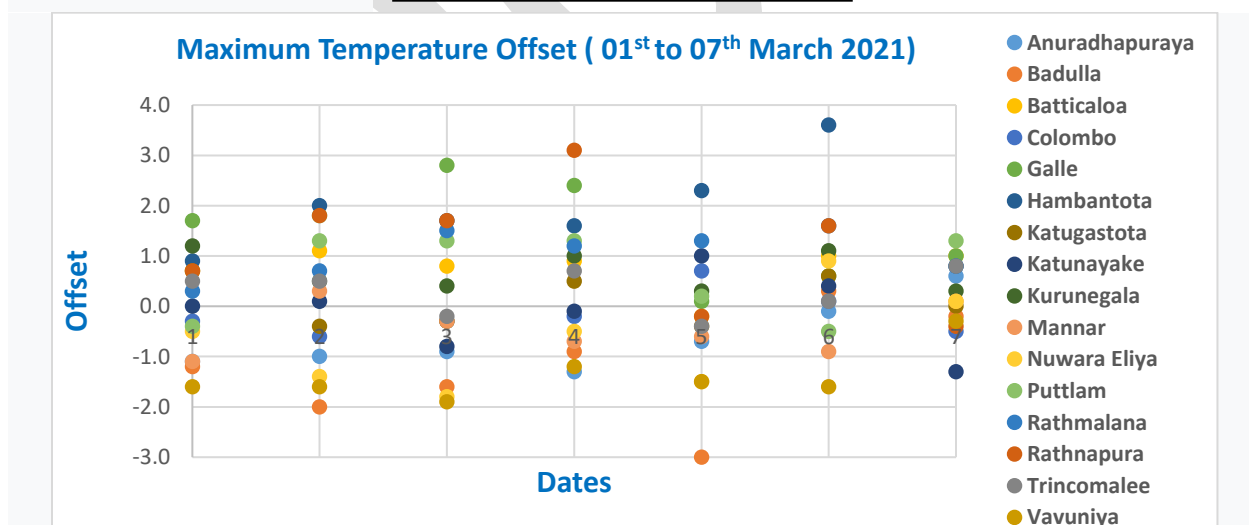


Fig 3.b: maximum temperature anomaly

Figure 3. Maximum temperatures (°C) and anomalies (°C) during the week

2.2 Minimum temperature

The weekly lowest minimum temperature, 5.6 °C was reported as usual from Nuwara-Eliya station on 02nd March. The weekly highest minimum temperature 26.2 °C, was reported at Rathmalana on 01st (Fig 4.a). Below normal minimum temperatures had been reported from all most all main Meteorological stations on 02nd to 04th and above normal minimum temperatures had been reported at many stations during the last three days of this week. Highest positive anomaly of minimum temperature 3.0 °C was reported at Rathmalana (Fig 4.b) on 01st. Lowest negative anomaly of minimum temperature, 5.6 °C was reported at Badulla on 02nd.

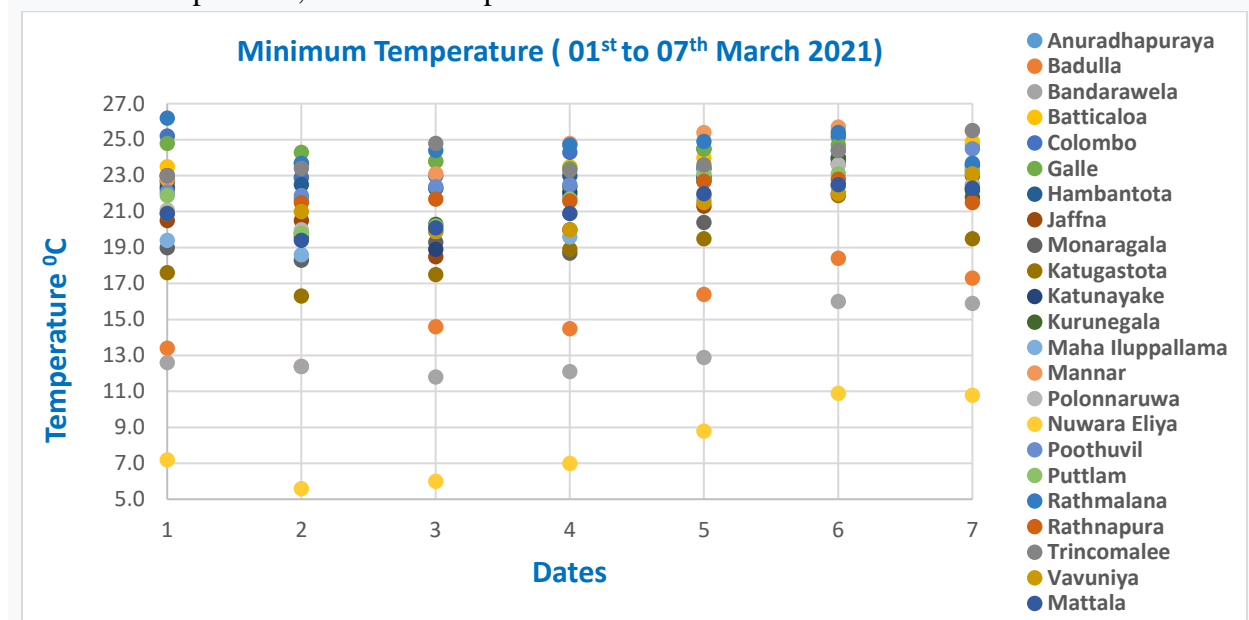


Fig 4.a: minimum temperature

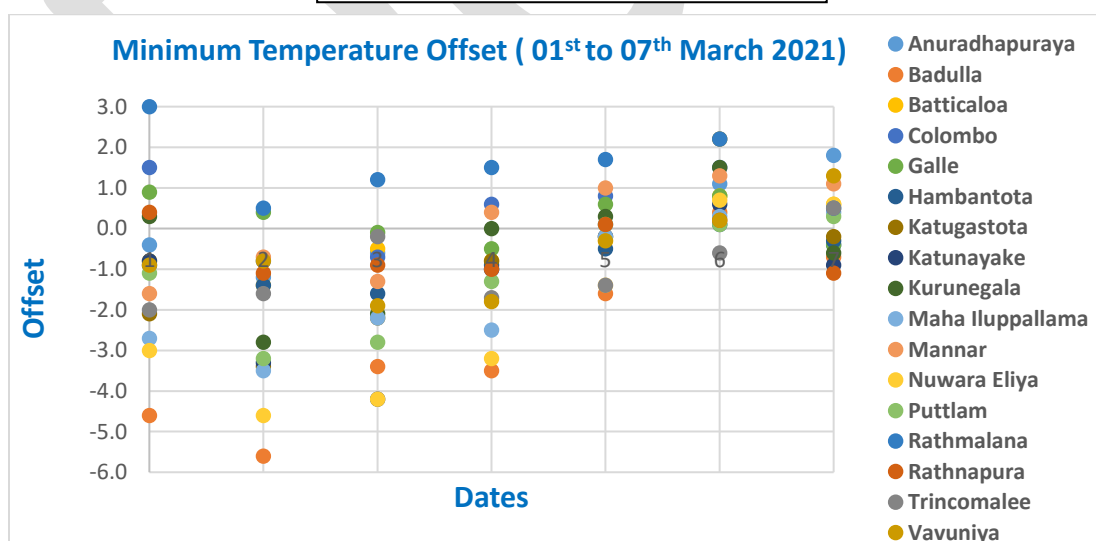


Fig 4.b: anomaly of minimum temperature

Figure 4. Minimum temperatures (°C) and anomalies (°C) during the week

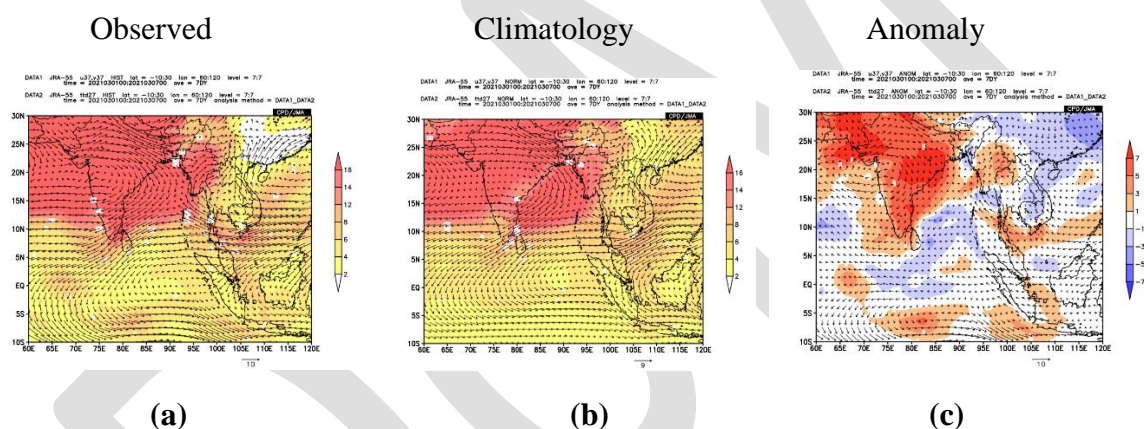
3. Wind

Light to moderate north-northeasterly, slightly dry surface winds were prevailed over the Island till 05th March. It has changed as light to moderate, northeasterly and slightly moist during the last two days of this week.

Upper winds at 850hPa:

Northeasterly (15-20 kts), dry winds were prevailed over the Island till 03rd March and then it has changed as easterly at 850hpa. RH was increased gradually during the latter part of this week at 850hpa.

East-northeasterly weekly average observed winds were prevailed over the island (Figure 5.a) at 850hpa during this week. East-northeasterly, slightly dry climatological (Figure 5.b) wind pattern is prevailed over the Island during this week too. There was Northeasterly, dry wind anomaly (Figure 5.c) was prevailed at 850hpa.

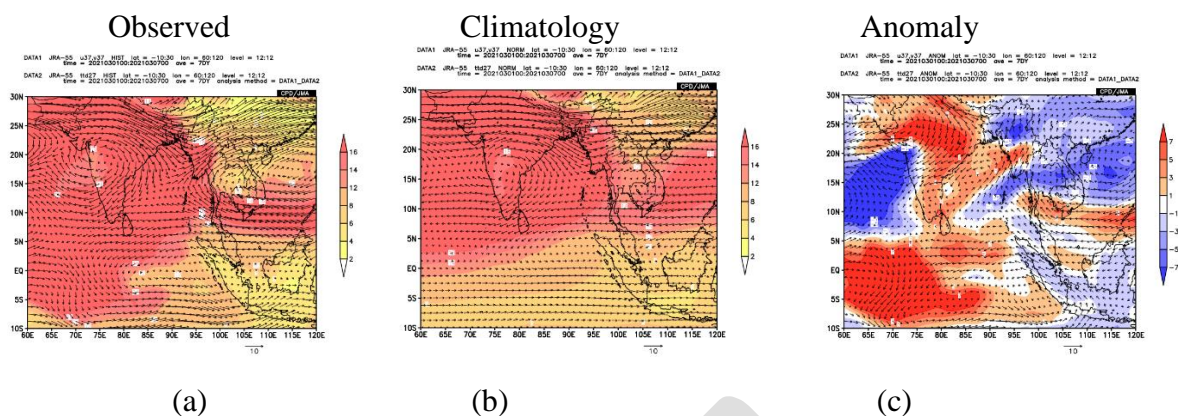


***Figure 5: wind pattern with dewpoint departures at 850hpa**

Upper winds at 700hPa:

Prevailed Northeasterly (15-20kts), dry winds were changed as easterly on 04th over the Island at 700hpa. RH was increased and wind speed was decreased (05-15kts) over the Island during the last two days of this week.

Easterly very dry weekly averaged observed winds were prevailed over the country during this week (Figure 6.a). Easterly dry climatological (Figure 6.b) winds are prevailed at 700hPa level during this week. And easterly, dry wind anomaly (Figure 6.c) was prevailed over the country at 700hpa.

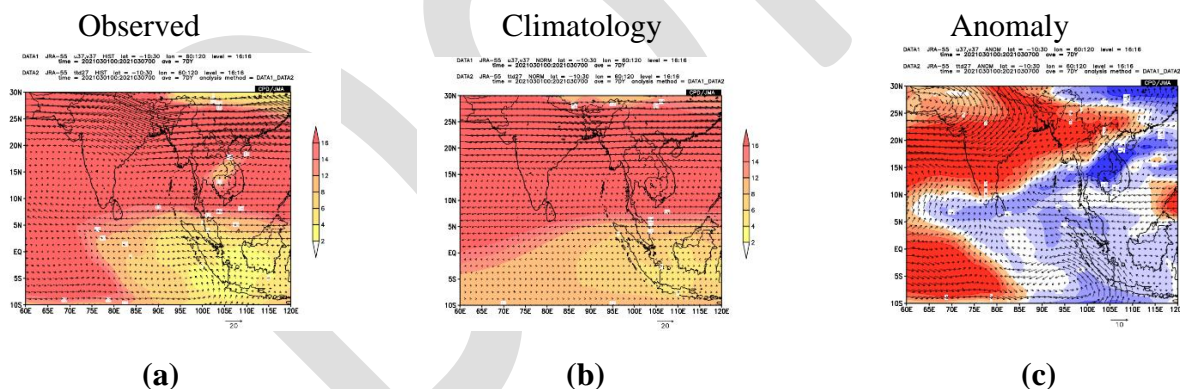


***Figure 6: wind pattern with dewpoint departures at 700hpa**

Upper winds at 500hPa:

Northerly (10-15kts), dry winds were prevailed during the first two days of this week at 500hpa. Then it has changed as southeasterly and RH was increased on 05th afternoon onwards.

Easterly, dry weekly average observed (Figure 7.a), winds were over the island during this week at 500hpa. The climatological wind pattern is Easterly and dry (Figure 7.b). However, southeasterly, slightly moist wind anomaly (Figure 7.c) was prevailed over the Island at 500hpa during this week. Observed winds are moist than climatological winds.



***Figure 7: wind pattern with dewpoint departures at 500hpa**

Remarks:

*Figure 5, 6 & 7: source "ITACS"-products of Japan Meteorological Agency

**

Rainfall (mm)		Winds (knots)		Pressure distribution (hpa)		Pressure gradient (hpa)	
Light	: 00-12.5	Light	:00-05	Even	:0.0-0.4	Mild	: 1.0-1.9
Light to moderate:	12.5-25.0	Light to moderate	:05-10	Fairly even:	0.5-0.9	Moderate	: 2.0-2.9
Moderate	: 25.0-50.0	Moderate	:10-15			Steep	: 3.0-3.9
Fairly heavy	: 50.0-100.0	Fresh	:15-20			Very steep	:4.0-4.9
Heavy	: 100.0-150.0	Strong	:20-30				
Very heavy	: 150 and over	Very strong	:30 and over				