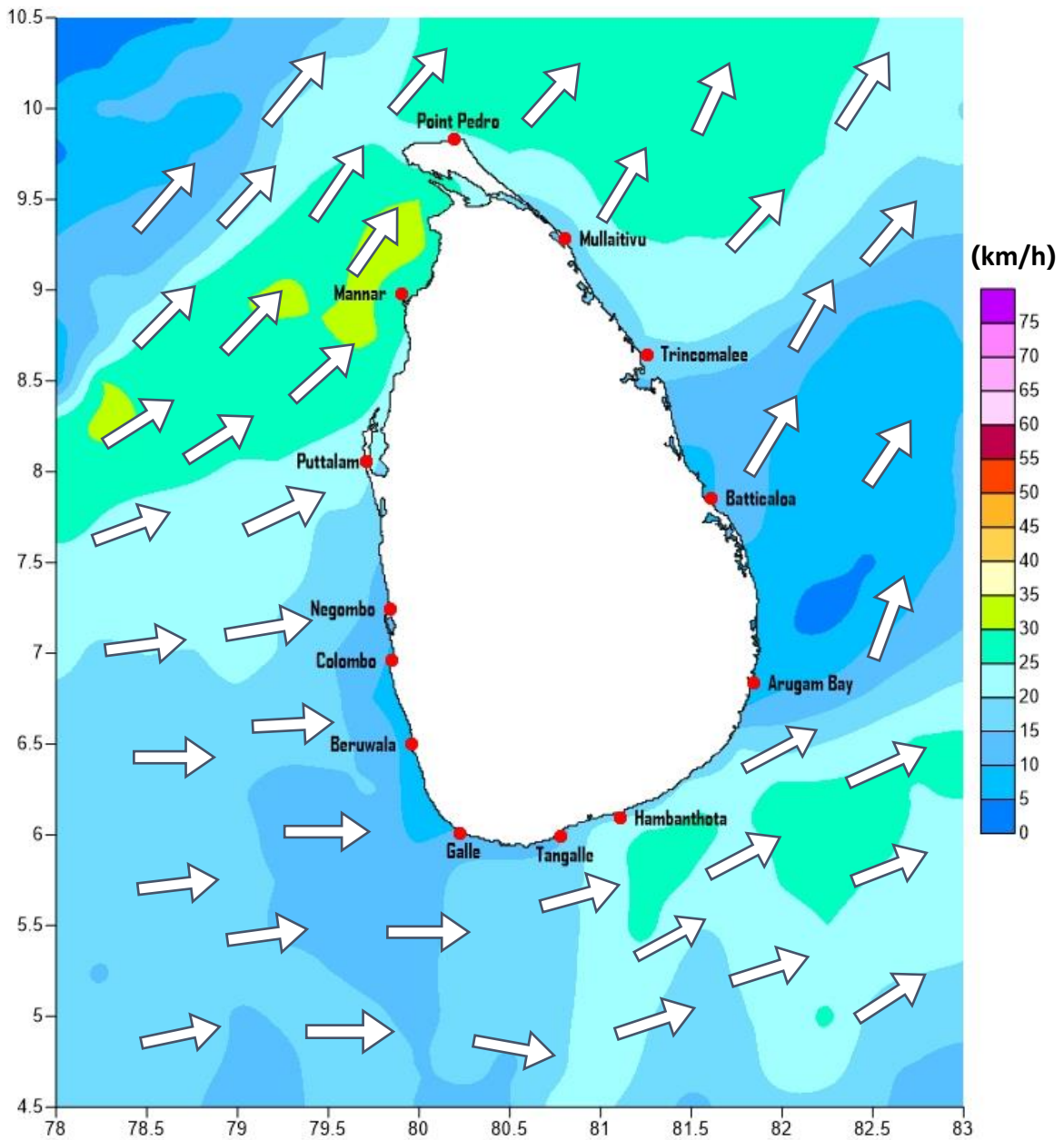


# Weather Forecast For Fishery and Naval Community

Marine weather forecast for sea areas around the island  
Issued at 04.00 p.m. on 16 May 2021

Marine weather forecast for 05.30 a.m. to 05.30 p.m. on 17/05/2021



Marine Division  
Department of Meteorology  
Colombo 07, Sri Lanka  
+94 112686686

For Safer Shipping



## Weather Forecast For Fishery and Naval Community

Sea Area	Wind Speed	Wave Height	Sea Condition	Weather
Puttalam to Mannar	35-45 kmph; 60kmph at times.	1.5-2.5 m; 4.5 m at times.	Fairly rough; Rough at times.	Showers or thundershowers will occur at times.
Mannar to Kankasanthurai	35-45 kmph; 60kmph at times.	1.5-2.5 m; 4.5 m at times.	Fairly rough; Rough at times.	A few showers are likely.
Kankasanthurai to Trincomalee	30-35 kmph; 45 kmph at times.	1.25-2.5 m; 3.0m at times.	Moderate; Fairly rough at times.	A few showers are likely.
Trincomalee to Batticaloa	25-35 kmph.	1.0-2.25 m.	Moderate.	Mainly fair.
Batticaloa to Pottuvil	25-35 kmph.	1.0-2.25 m.	Moderate.	Mainly fair.
Pottuvil to Hambantota	30-35 kmph; 45 kmph at times.	1.25-2.5 m; 3.0m at times.	Moderate; Fairly rough at times.	A few showers are likely.
Hambantota to Galle	30-35 kmph; 45 kmph at times.	1.25-2.5 m; 3.0m at times.	Moderate; Fairly rough at times.	Showers or thundershowers will occur at several places.
Galle to Colombo	25-35kmph; 45 kmph at times.	1.0-2.5 m; 3.0 m at times.	Moderate; Fairly rough at times.	Showers or thundershowers will occur at several places.
Colombo to Puttalam	30-40 kmph; 60 kmph at times.	1.25-2.5 m; 4.5 m at times.	Moderate; Rough at times.	Showers at times.

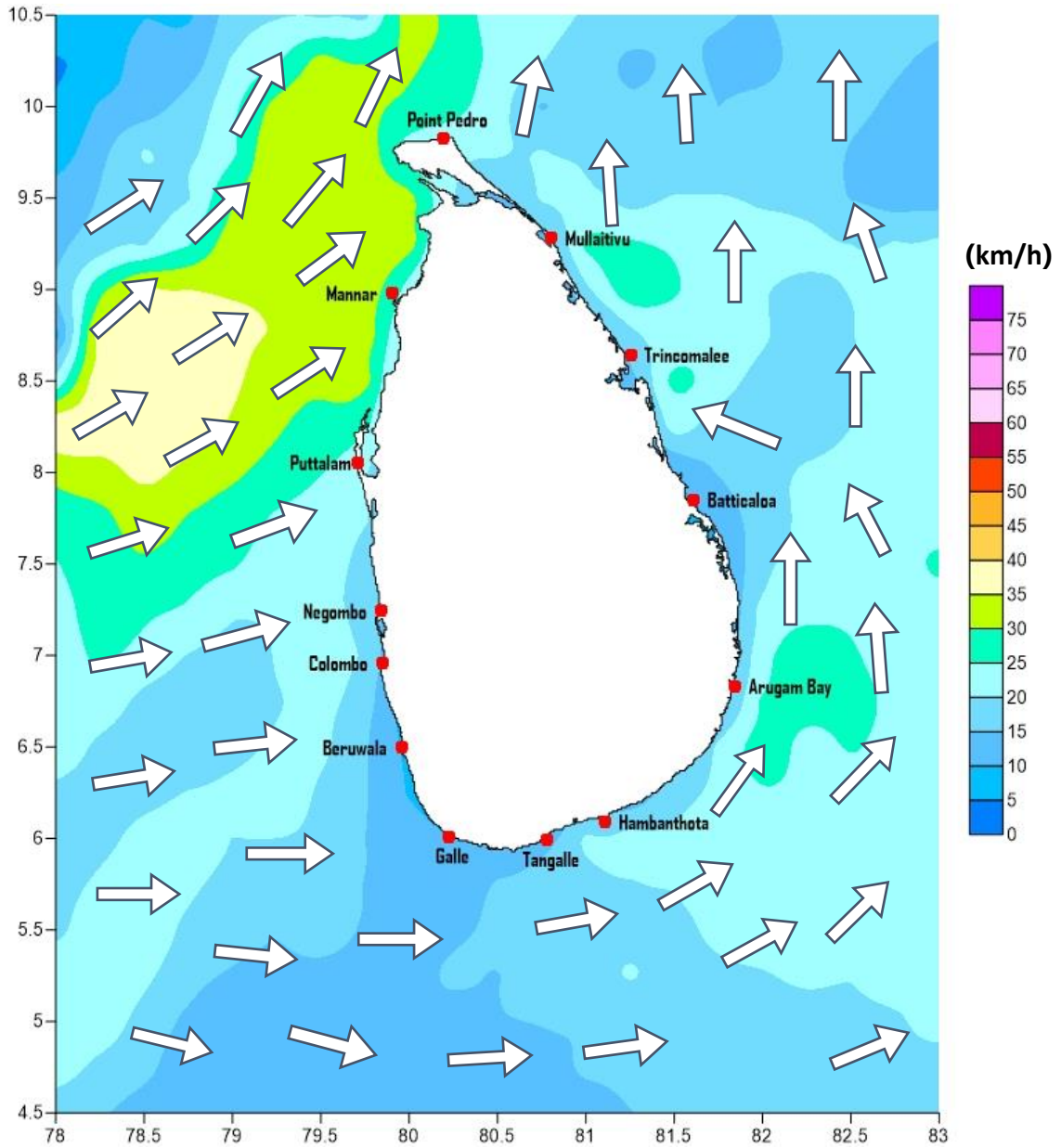
**Marine weather forecast for 05.30 p.m. on 17/05/2021 to 05.30 a.m. on 18/05/2021**

Marine Division  
Department of Meteorology  
Colombo 07, Sri Lanka  
+94 112686686

**For Safer Shipping**



# Weather Forecast For Fishery and Naval Community



Marine Division  
Department of Meteorology  
Colombo 07, Sri Lanka  
+94 112686686

For Safer Shipping



## Weather Forecast For Fishery and Naval Community

Sea Area	Wind Speed	Wave Height	Sea Condition	Weather
Puttalam to Mannar	35-45 kmph; 60kmph at times.	1.5-2.5 m; 4.5 m at times.	Fairly rough; Rough at times.	Showers or thundershowers will occur at times.
Mannar to Kankasanthurai	35-45 kmph; 60kmph at times.	1.5-2.5 m; 4.5 m at times.	Fairly rough; Rough at times.	A few showers are likely.
Kankasanthurai to Trincomalee	30-35 kmph; 45 kmph at times.	1.25-2.5 m; 3.0m at times.	Moderate; Fairly rough at times.	A few showers are likely.
Trincomalee to Batticaloa	25-35 kmph.	1.0-2.25 m.	Moderate.	Mainly fair.
Batticaloa to Pottuvil	25-35 kmph.	1.0-2.25 m.	Moderate.	Mainly fair.
Pottuvil to Hambantota	30-35 kmph; 45 kmph at times.	1.25-2.5 m; 3.0m at times.	Moderate; Fairly rough at times.	A few showers are likely.
Hambantota to Galle	30-35 kmph; 45 kmph at times.	1.25-2.5 m; 3.0m at times.	Moderate; Fairly rough at times.	Showers or thundershowers will occur at several places.
Galle to Colombo	25-35kmph; 45 kmph at times.	1.0-2.5 m; 3.0 m at times.	Moderate; Fairly rough at times.	Showers or thundershowers will occur at several places.
Colombo to Puttalam	30-40 kmph; 60 kmph at times.	1.25-2.5 m; 4.5 m at times.	Moderate; Rough at times.	Showers at times.

**\*\*Temporarily strong gusty winds (up to 60 -70 kmph) and very rough seas can be expected during Thundershowers.**

**\*\* There is a possibility that near shore sea areas off the coast extending from Mannar to Hambantota via Galle may experience surges due to the effect of swell waves, having 2.0-2.5m height (This is not for land area).**

Marine Division  
Department of Meteorology  
Colombo 07, Sri Lanka  
+94 112686686

**For Safer Shipping**

