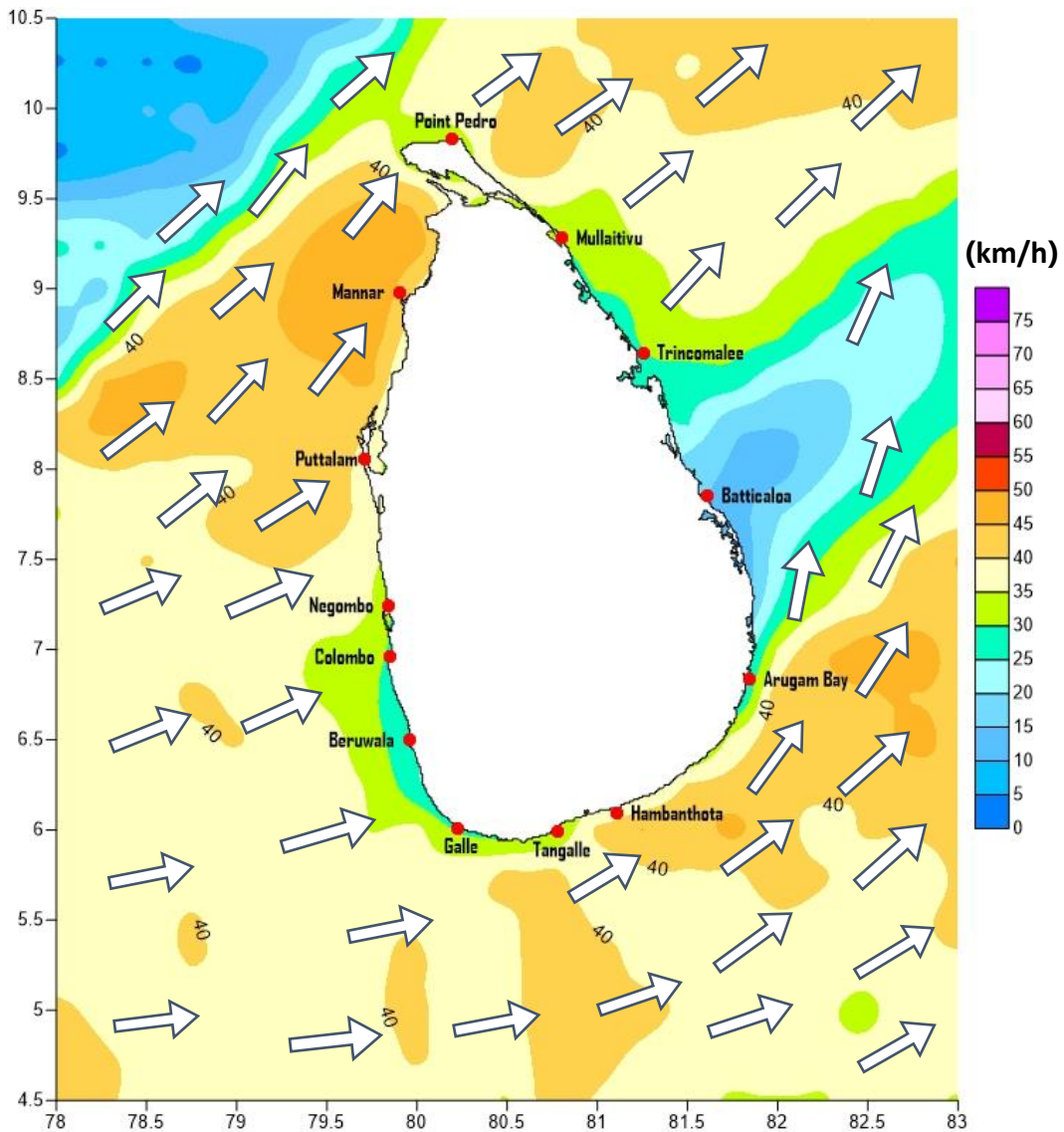


# Weather Forecast For Fishery and Naval Community

Marine weather forecast for sea areas around the island  
Issued at 04.00 p.m. on 16 October 2021

**Marine weather forecast for 05.30 a.m. to 05.30 p.m. on 17/10/2021**



Marine Division  
Department of Meteorology  
Colombo 07, Sri Lanka  
+94 112686686

**For Safer Shipping**



## Weather Forecast For Fishery and Naval Community

Sea Area	Wind Speed	Wave Height	Sea Condition	Weather
<b>Puttalam to Mannar</b>	30-40 kmph; 50-60 kmph at times.	1.25-2.5 m; 4.5 m at times.	Moderate; Rough at times.	Mainly fair.
<b>Mannar to Kankasanthurai</b>	30-40 kmph; 50-60 kmph at times.	1.25-2.5 m; 4.5 m at times.	Moderate; Rough at times.	Mainly fair.
<b>Kankasanthurai to Trincomalee</b>	30-40 kmph; 50 kmph at times.	1.25-2.5 m; 3.5m at times.	Moderate; Fairly rough at times.	Mainly fair.
<b>Trincomalee to Batticaloa</b>	30-40 kmph.	1.25-2.5 m.	Moderate.	Mainly fair.
<b>Batticaloa to Pottuvil</b>	30-40 kmph.	1.25-2.5 m.	Moderate.	Mainly fair.
<b>Pottuvil to Hambantota</b>	30-40 kmph; 50-60 kmph at times.	1.25-2.5 m; 4.5 m at times.	Moderate; Rough at times.	Mainly fair.
<b>Hambantota to Galle</b>	30-40 kmph; 50-60 kmph at times.	1.25-2.5 m; 4.5 m at times.	Moderate; Rough at times.	Showers or thundershowers will occur at several places.
<b>Galle to Colombo</b>	30-40 kmph; 50 kmph at times.	1.25-2.5 m; 3.5m at times.	Moderate; Fairly rough at times.	Showers or thundershowers will occur at several places.
<b>Colombo to Puttalam</b>	30-40 kmph; 50 kmph at times.	1.25-2.5 m; 3.5m at times.	Moderate; Fairly rough at times.	Showers or thundershowers will occur at several places.

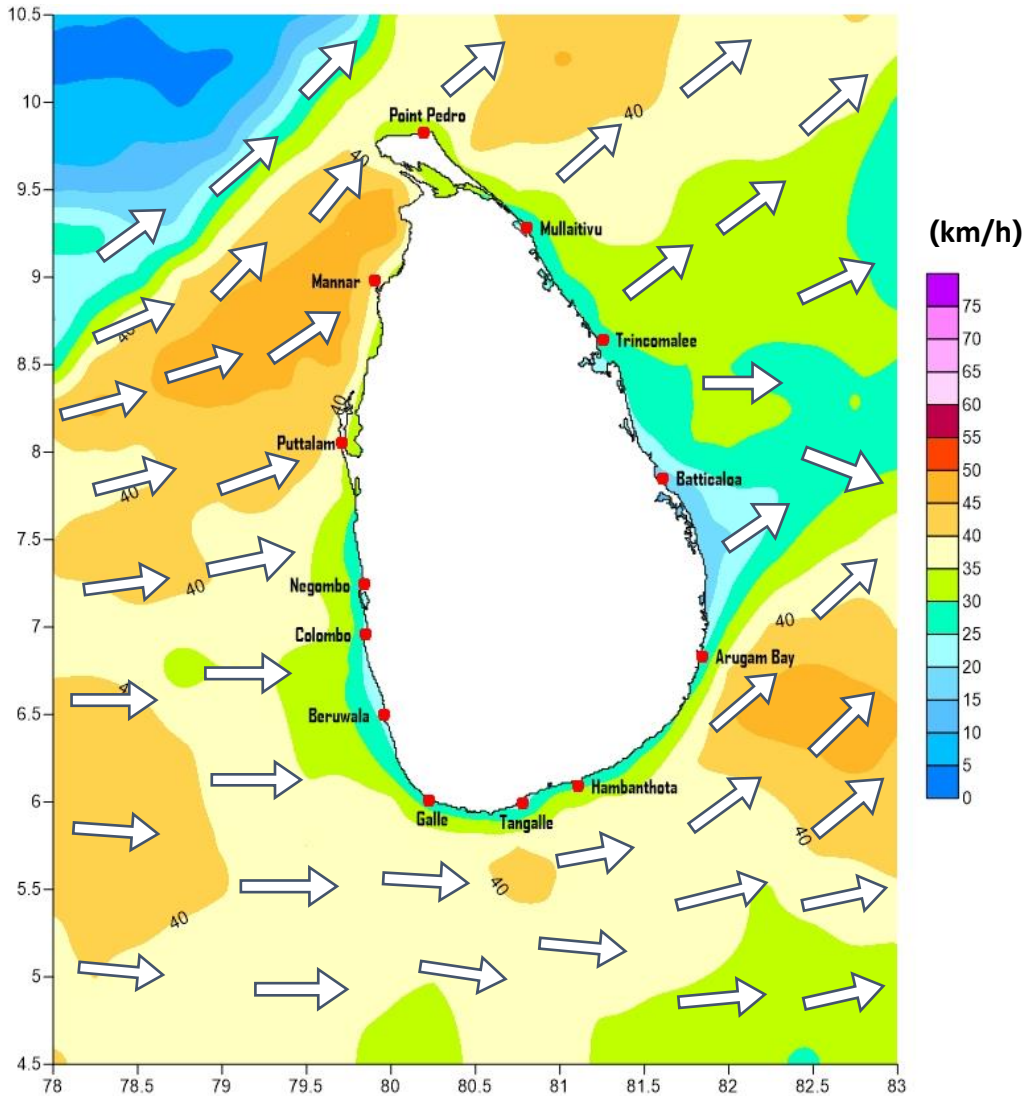
Marine Division  
Department of Meteorology  
Colombo 07, Sri Lanka  
+94 112686686

**For Safer Shipping**



# Weather Forecast For Fishery and Naval Community

Marine weather forecast for 05.30 p.m. on 17/10/2021 to 05.30 a.m. on 18/10/2021



Marine Division  
Department of Meteorology  
Colombo 07, Sri Lanka  
+94 112686686

For Safer Shipping



## Weather Forecast For Fishery and Naval Community

Sea Area	Wind Speed	Wave Height	Sea Condition	Weather
<b>Puttalam to Mannar</b>	30-40 kmph; 50-60 kmph at times.	1.25-2.5 m; 4.5 m at times.	Moderate; Rough at times.	Mainly fair.
<b>Mannar to Kankasanthurai</b>	30-40 kmph; 50-60 kmph at times.	1.25-2.5 m; 4.5 m at times.	Moderate; Rough at times.	Mainly fair.
<b>Kankasanthurai to Trincomalee</b>	30-40 kmph; 50 kmph at times.	1.25-2.5 m; 3.5m at times.	Moderate; Fairly rough at times.	Mainly fair.
<b>Trincomalee to Batticaloa</b>	30-40 kmph.	1.25-2.5 m.	Moderate.	Mainly fair.
<b>Batticaloa to Pottuvil</b>	30-40 kmph.	1.25-2.5 m.	Moderate.	Mainly fair.
<b>Pottuvil to Hambantota</b>	30-40 kmph; 50-60 kmph at times.	1.25-2.5 m; 4.5 m at times.	Moderate; Rough at times.	Mainly fair.
<b>Hambantota to Galle</b>	30-40 kmph; 50-60 kmph at times.	1.25-2.5 m; 4.5 m at times.	Moderate; Rough at times.	Showers or thundershowers will occur at several places.
<b>Galle to Colombo</b>	30-40 kmph; 50 kmph at times.	1.25-2.5 m; 3.5m at times.	Moderate; Fairly rough at times.	Showers or thundershowers will occur at several places.
<b>Colombo to Puttalam</b>	30-40 kmph; 50 kmph at times.	1.25-2.5 m; 3.5m at times.	Moderate; Fairly rough at times.	Showers or thundershowers will occur at several places.

Marine Division  
Department of Meteorology  
Colombo 07, Sri Lanka  
+94 112686686

**For Safer Shipping**

