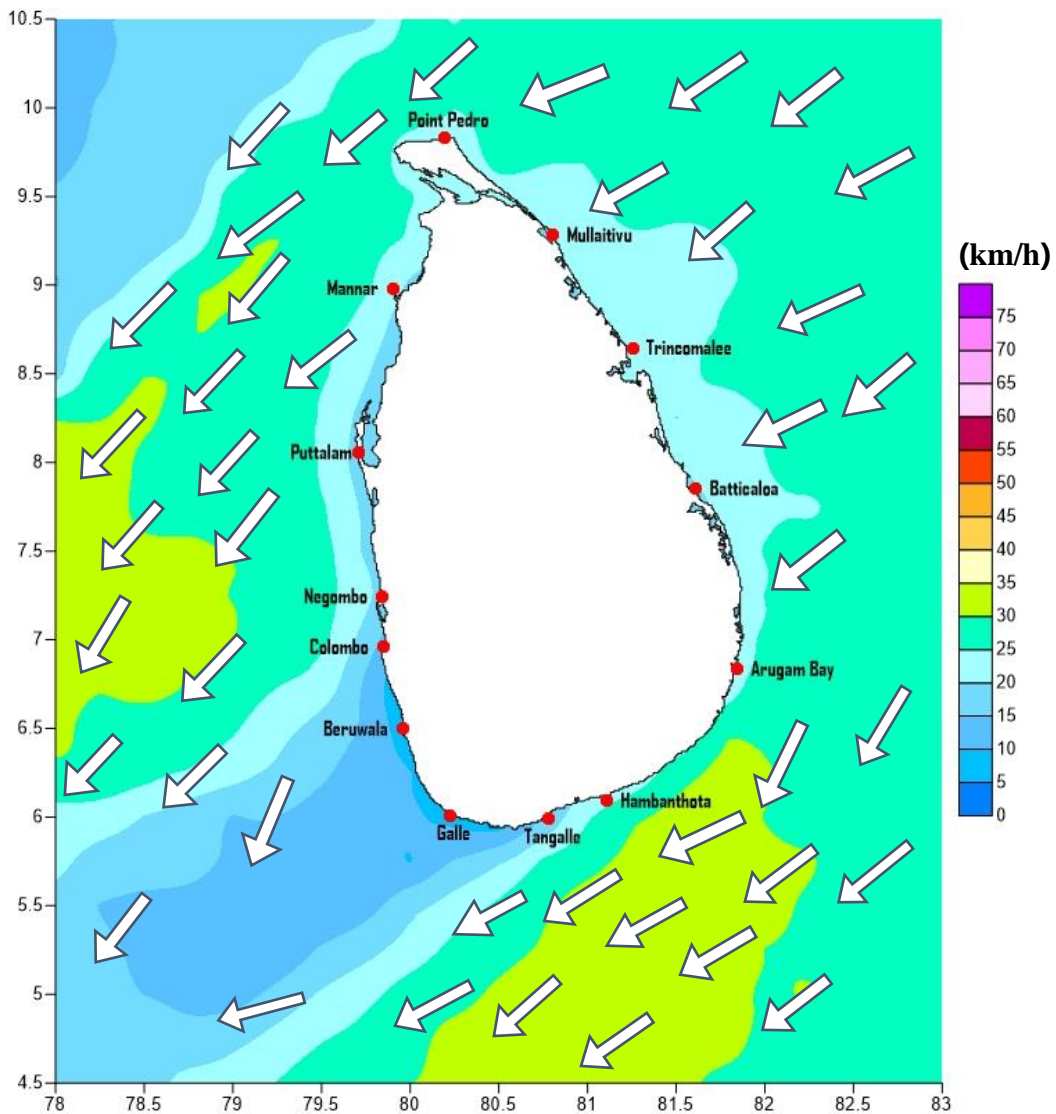


# Weather Forecast For Fishery and Naval Community

Marine weather forecast for sea areas around the island

Issued at 04.00 p.m. on 15 January 2022

Marine weather forecast for 05.30 a.m. to 05.30 p.m. on 16/01/2022



Marine Division  
Department of Meteorology  
Colombo 07, Sri Lanka  
+94 112686686

For Safer Shipping



## Weather Forecast For Fishery and Naval Community

Sea Area	Wind Speed	Wave Height	Sea Condition	Weather
Puttalam to Mannar	25-35 kmph; 45 kmph at times.	1.0-2.25 m; 3.0 m at times.	Slight to moderate; Fairly rough at times.	Mainly fair.
Mannar to Kankasanthurai	25-35 kmph.	1.0-2.25 m.	Slight to moderate.	Mainly fair.
Kankasanthurai to Trincomalee	25-35 kmph.	1.0-2.25 m.	Slight to moderate.	Mainly fair.
Trincomalee to Batticaloa	25-35 kmph.	1.0-2.25 m.	Slight to moderate.	Mainly fair.
Batticaloa to Pottuvil	25-35 kmph.	1.0-2.25 m.	Slight to moderate.	A few showers are likely.
Pottuvil to Hambantota	25-35 kmph; 45 kmph at times.	1.0-2.25 m; 3.0 m at times.	Slight to moderate; Fairly rough at times.	A few showers are likely.
Hambantota to Matara	25-35 kmph; 45 kmph at times.	1.0-2.25 m; 3.0 m at times.	Slight to moderate; Fairly rough at times.	Showers or thundershowers are likely at a few places in the evening.
Matara to Colombo	20-30 kmph.	0.75-1.25 m.	Slight.	Showers or thundershowers are likely at a few places in the evening.
Colombo to Puttalam	25-35 kmph; 45 kmph at times.	1.0-2.25 m; 3.0 m at times.	Slight to moderate; Fairly rough at times.	Mainly fair.

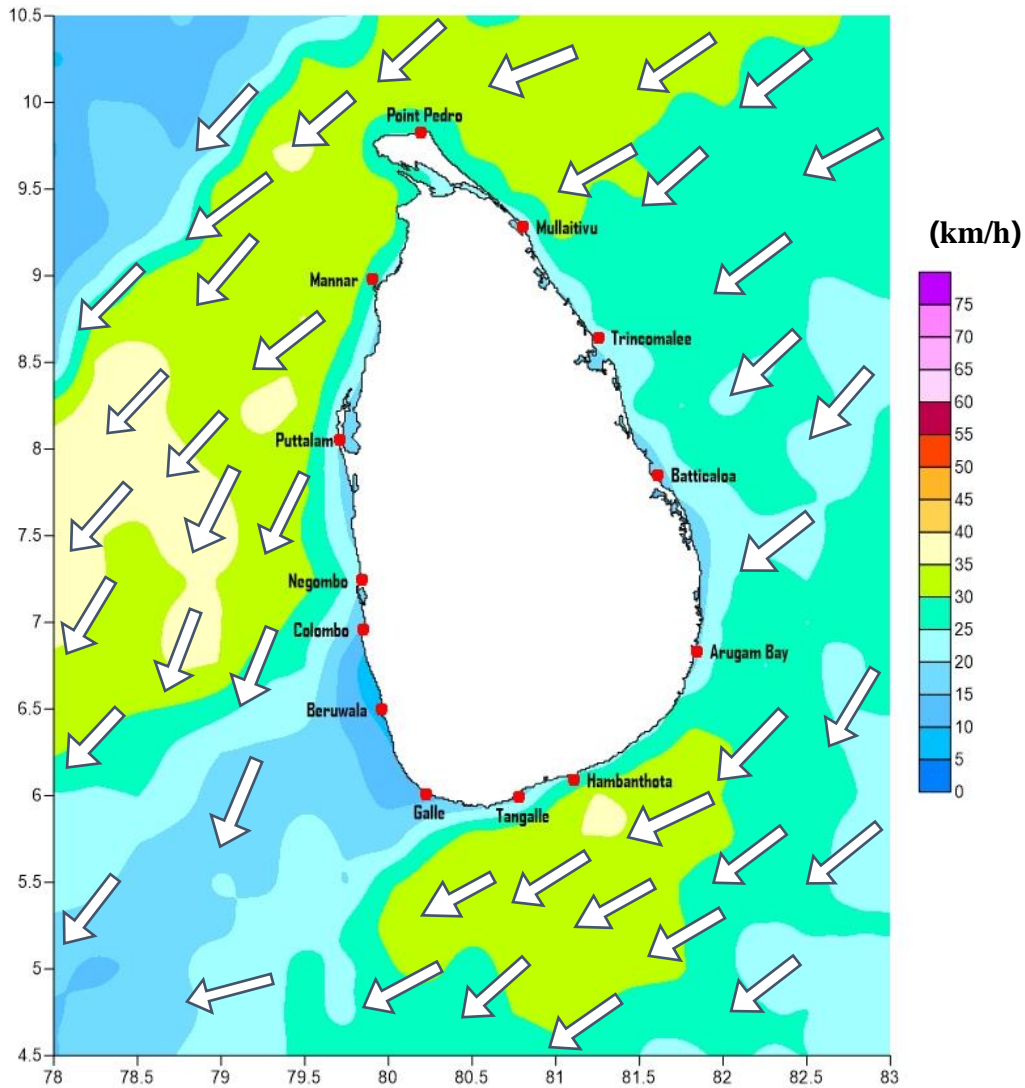
Marine Division  
Department of Meteorology  
Colombo 07, Sri Lanka  
+94 112686686

**For Safer Shipping**



# Weather Forecast For Fishery and Naval Community

Marine weather forecast for 05.30 p.m. on 16/01/2022 to 05.30 a.m. on 17/01/2022



Marine Division  
Department of Meteorology  
Colombo 07, Sri Lanka  
+94 112686686

For Safer Shipping



## Weather Forecast For Fishery and Naval Community

Sea Area	Wind Speed	Wave Height	Sea Condition	Weather
Puttalam to Mannar	25-35 kmph; 45 kmph at times.	1.0-2.25 m; 3.0 m at times.	Slight to moderate; Fairly rough at times.	Mainly fair.
Mannar to Kankasanthurai	25-35 kmph; 45 kmph at times.	1.0-2.25 m; 3.0 m at times.	Slight to moderate; Fairly rough at times.	Mainly fair.
Kankasanthurai to Trincomalee	25-35 kmph.	1.0-2.25 m.	Slight to moderate.	Mainly fair.
Trincomalee to Batticaloa	25-35 kmph.	1.0-2.25 m.	Slight to moderate.	A few showers are likely.
Batticaloa to Pottuvil	25-35 kmph.	1.0-2.25 m.	Slight to moderate.	A few showers are likely.
Pottuvil to Hambantota	25-35 kmph; 45 kmph at times.	1.0-2.25 m; 3.0 m at times.	Slight to moderate; Fairly rough at times.	Several spells of showers
Hambantota to Matara	25-35 kmph; 45 kmph at times.	1.0-2.25 m; 3.0 m at times.	Slight to moderate; Fairly rough at times.	Showers or thundershowers may occur at several places in the afternoon.
Matara to Colombo	20-30 kmph.	0.75-1.25 m.	Slight.	Showers or thundershowers may occur at several places in the afternoon.
Colombo to Puttalam	25-35 kmph; 45 kmph at times.	1.0-2.25 m; 3.0 m at times.	Slight to moderate; Fairly rough at times.	Mainly fair.

\*Temporarily strong gusty winds (up to 60-70kmph) and very rough seas can be expected during thundershowers.

Marine Division  
Department of Meteorology  
Colombo 07, Sri Lanka  
+94 112686686

**For Safer Shipping**

