

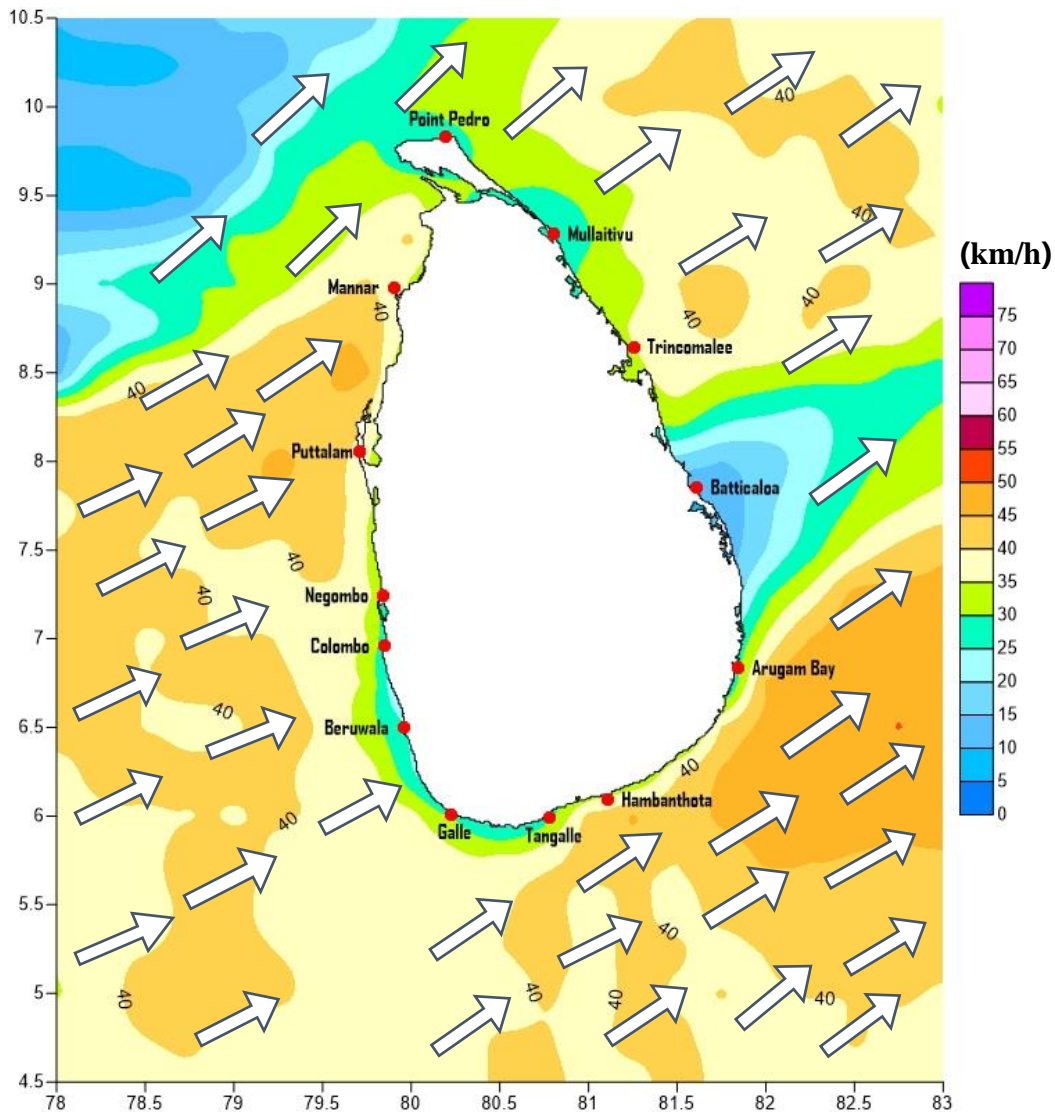
Weather Forecast For Fishery and Naval Community

Marine weather forecast for sea areas around the island

Issued at 04.00 p.m. on 14 May 2022

There is a possibility that near shore sea areas off the coast extending from Kankasanturai to Pottuvil via Puttalam, Galle and Hambantota, may experience swell waves, having 2.0 - 2.5 m height (This is not for land area).

Marine weather forecast for 05.30 a.m. to 05.30 p.m. on 15/05/2022



Marine Division
Department of Meteorology
Colombo 07, Sri Lanka
+94 112686686

For Safer Shipping



Weather Forecast For Fishery and Naval Community

Sea Area	Wind Speed	Wave Height	Sea Condition	Weather
Puttalam to Mannar	35-45 kmph; 60-70 kmph at times.	2.25-3.0 m; 5.5 m at times.	Fairly rough; Rough to Very rough at times.	Showers at times.
Mannar to Kankasanturai	35-45 kmph; 55-65 kmph at times.	2.25-3.0 m; 5.0 m at times.	Fairly rough; Rough to Very rough at times.	Showers at several places.
Kankasanturai to Trincomalee	30-40 kmph; 50-60 kmph at times.	1.25-2.5 m; 4.5 m at times.	Moderate; Rough at times.	Showers or thundershowers may occur at several places
Trincomalee to Batticaloa	30-40 kmph; 50 kmph at times.	1.25-2.5 m; 3.5m at times.	Moderate; Fairly rough at times.	Showers or thundershowers may occur at several places in the afternoon.
Batticaloa to Pottuvil	30-40 kmph; 50 kmph at times.	1.25-2.5 m; 3.5m at times.	Moderate; Fairly rough at times.	Showers or thundershowers may occur at several places in the afternoon.
Pottuvil to Hambantota	35-45 kmph; 60-70 kmph at times.	2.25-3.0 m; 5.5 m at times.	Fairly rough; Rough to Very rough at times.	Showers at times.
Hambantota to Galle	35-45 kmph; 55-65 kmph at times.	2.25-3.0 m; 5.0 m at times.	Fairly rough; Rough to Very rough at times.	Showers or thundershowers will occur at times.
Galle to Colombo	35-45 kmph; 55-65 kmph at times.	2.25-3.0 m; 5.0 m at times.	Fairly rough; Rough to Very rough at times.	Showers or thundershowers will occur at times. Fairly heavy falls are likely at some places
Colombo to Puttalam	35-45 kmph; 60-70 kmph at times.	2.25-3.0 m; 5.5 m at times.	Fairly rough; Rough to Very rough at times.	Showers or thundershowers will occur at times. Fairly heavy falls are likely at some places

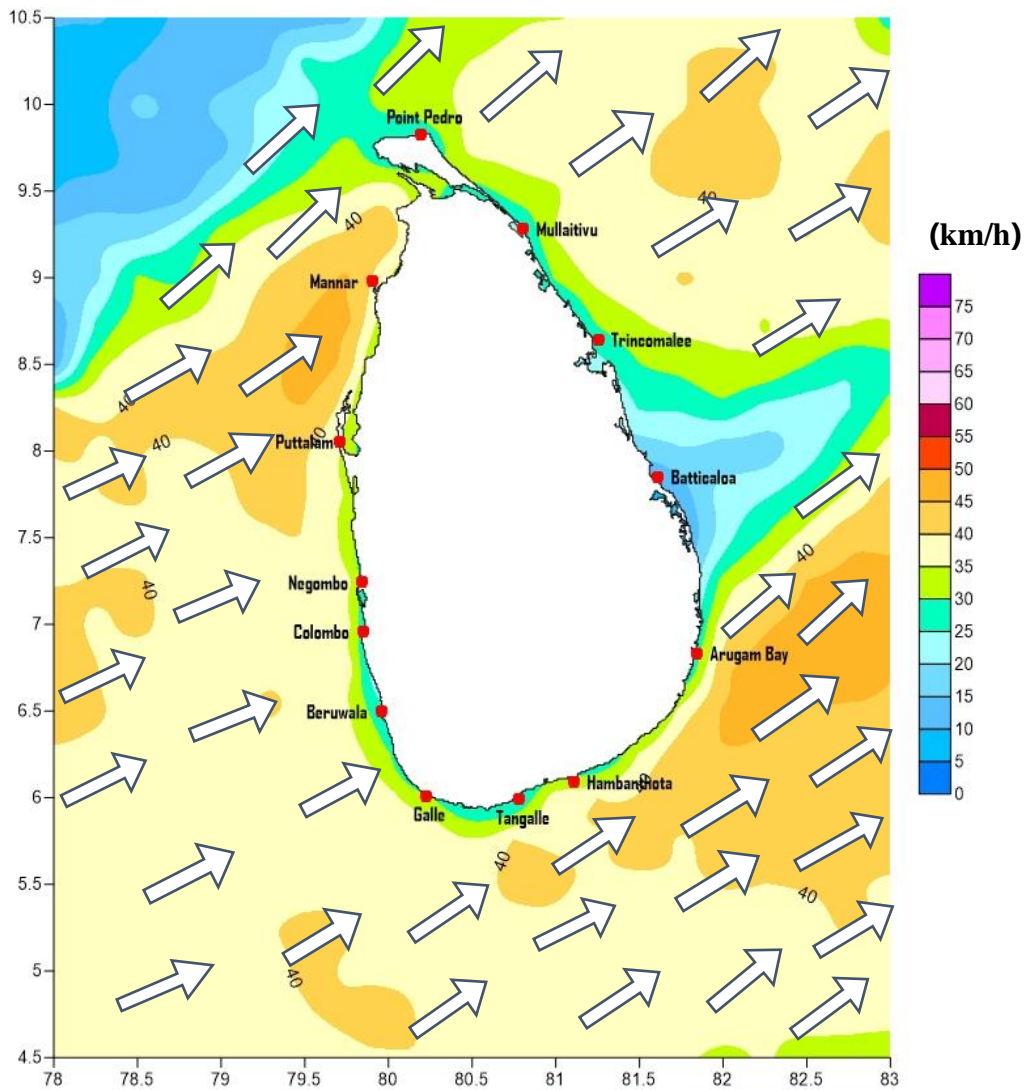
Marine Division
Department of Meteorology
Colombo 07, Sri Lanka
+94 112686686

For Safer Shipping



Weather Forecast For Fishery and Naval Community

Marine weather forecast for 05.30 p.m. on 15/05/2022 to 05.30 a.m. on 16/05/2022



Marine Division
Department of Meteorology
Colombo 07, Sri Lanka
+94 112686686

For Safer Shipping



Weather Forecast For Fishery and Naval Community

Sea Area	Wind Speed	Wave Height	Sea Condition	Weather
Puttalam to Mannar	35-45 kmph; 60-70 kmph at times.	2.25-3.0 m; 5.5 m at times.	Fairly rough; Rough to Very rough at times.	Showers at times.
Mannar to Kankasanthurai	35-45 kmph; 55-65 kmph at times.	2.25-3.0 m; 5.0 m at times.	Fairly rough; Rough to Very rough at times.	Showers at several places.
Kankasanthurai to Trincomalee	30-40 kmph; 50-60 kmph at times.	1.25-2.5 m; 4.5 m at times.	Moderate; Rough at times.	Showers or thundershowers may occur at several places
Trincomalee to Batticaloa	30-40 kmph; 50 kmph at times.	1.25-2.5 m; 3.5m at times.	Moderate; Fairly rough at times.	Showers or thundershowers may occur at several places in the afternoon.
Batticaloa to Pottuvil	30-40 kmph; 50 kmph at times.	1.25-2.5 m; 3.5m at times.	Moderate; Fairly rough at times.	Showers or thundershowers may occur at several places in the afternoon.
Pottuvil to Hambantota	35-45 kmph; 60-70 kmph at times.	2.25-3.0 m; 5.5 m at times.	Fairly rough; Rough to Very rough at times.	Showers at times.
Hambantota to Galle	35-45 kmph; 55-65 kmph at times.	2.25-3.0 m; 5.0 m at times.	Fairly rough; Rough to Very rough at times.	Showers or thundershowers will occur at times.
Galle to Colombo	35-45 kmph; 55-65 kmph at times.	2.25-3.0 m; 5.0 m at times.	Fairly rough; Rough to Very rough at times.	Showers or thundershowers will occur at times. Fairly heavy falls are likely at some places
Colombo to Puttalam	35-45 kmph; 60-70 kmph at times.	2.25-3.0 m; 5.5 m at times.	Fairly rough; Rough to Very rough at times.	Showers or thundershowers will occur at times. Fairly heavy falls are likely at some places

***Temporarily strong gusty winds (up to 60-70kmph) and very rough seas can be expected during thundershowers.**

Marine Division
Department of Meteorology
Colombo 07, Sri Lanka
+94 112686686

For Safer Shipping

