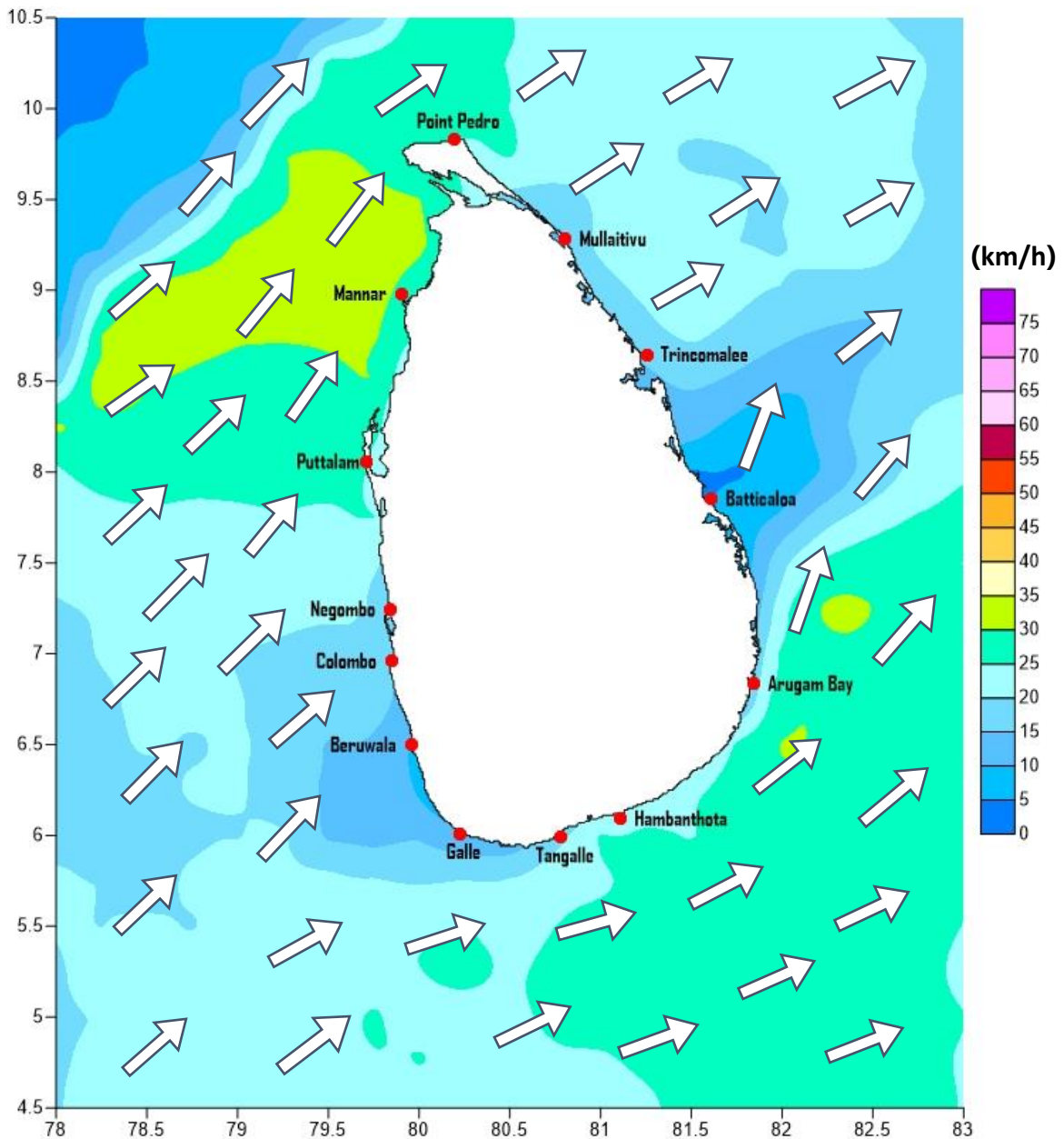


Weather Forecast For Fishery and Naval Community

Marine weather forecast for sea areas around the island
Issued at 04.00 p.m. on 17 April 2021

Marine weather forecast for 05.30 a.m. to 05.30 p.m. on 18/04/2021



Marine Division
Department of Meteorology
Colombo 07, Sri Lanka
+94 112686686

For Safer Shipping



Weather Forecast For Fishery and Naval Community

Sea Area	Wind Speed	Wave Height	Sea Condition	Weather
Puttalam to Mannar	20-30 kmph.	0.75-1.25 m.	Slight.	Mainly fair.
Mannar to Kankasanthurai	20-30 kmph; 40 kmph at times.	0.75-1.25 m; 2.5 m at times	Slight; moderate at times.	Mainly fair.
Kankasanthurai to Trincomalee	20-30 kmph.	0.75-1.25 m.	Slight.	Mainly fair.
Trincomalee to Batticaloa	20-30 kmph.	0.75-1.25 m.	Slight.	Mainly fair.
Batticaloa to Pottuvil	20-30 kmph.	0.75-1.25 m.	Slight.	Showers or thundershowers will occur at several places
Pottuvil to Hambantota	20-30 kmph; 40 kmph at times.	0.75-1.25 m; 2.5 m at times	Slight; moderate at times.	Showers or thundershowers will occur at several places
Hambantota to Galle	20-30 kmph; 40 kmph at times.	0.75-1.25 m; 2.5 m at times	Slight; moderate at times.	Showers or thundershowers will occur at several places in the afternoon
Galle to Colombo	20-30 kmph.	0.75-1.25 m.	Slight.	Showers or thundershowers will occur at several places
Colombo to Puttalam	20-30 kmph.	0.75-1.25 m.	Slight.	Showers or thundershowers will occur at several places

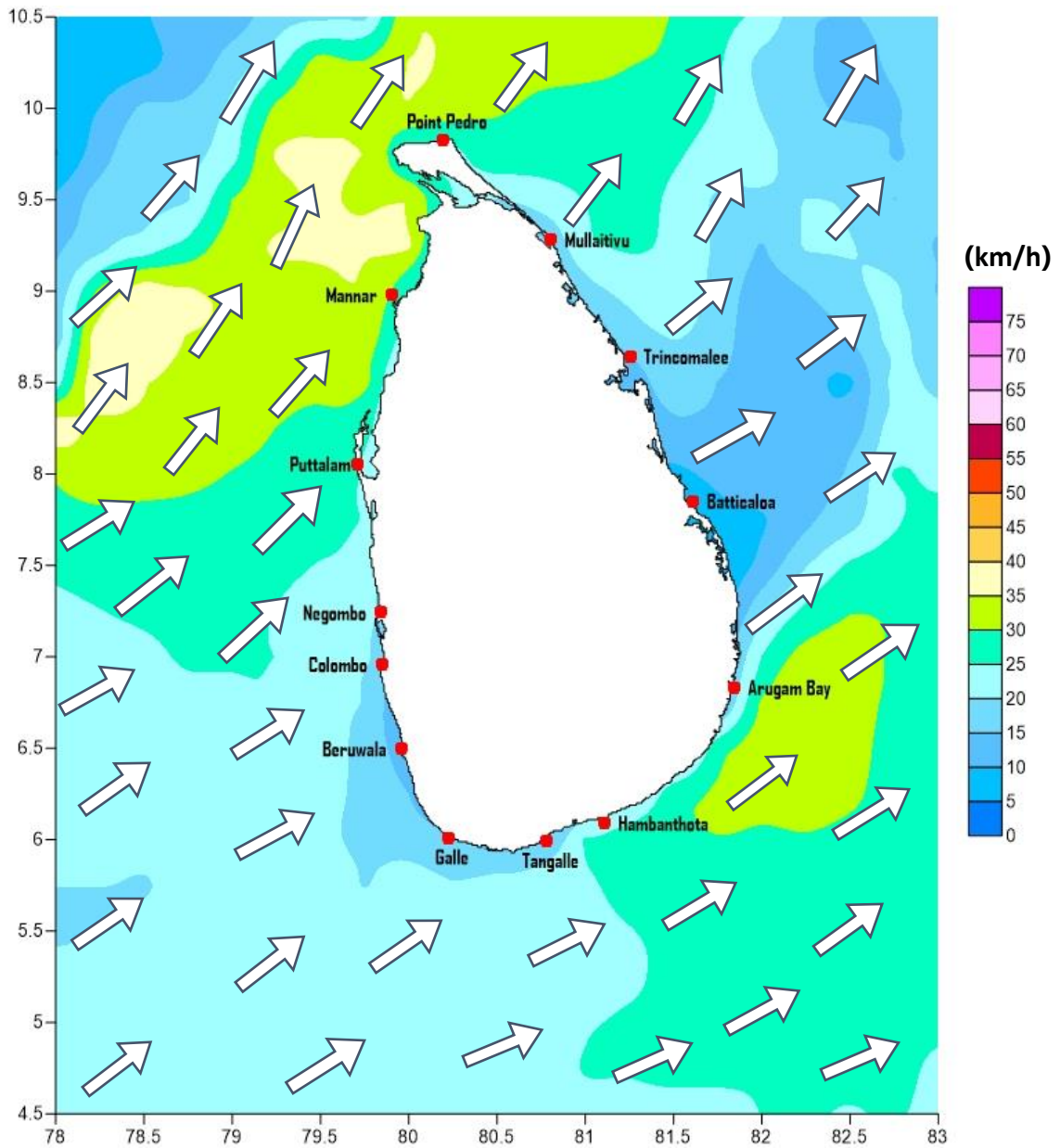
Marine Division
Department of Meteorology
Colombo 07, Sri Lanka
+94 112686686

For Safer Shipping



Weather Forecast For Fishery and Naval Community

Marine weather forecast for 05.30 p.m. on 18/04/2021 to 05.30 a.m. on 19/04/2021



Marine Division
Department of Meteorology
Colombo 07, Sri Lanka
+94 112686686

For Safer Shipping



Weather Forecast For Fishery and Naval Community

Sea Area	Wind Speed	Wave Height	Sea Condition	Weather
Puttalam to Mannar	20-30 kmph; 35 kmph at times.	0.75-1.25 m; 2.25 m at times	Slight; moderate at times.	Mainly fair.
Mannar to Kankasanthurai	20-30 kmph; 40 kmph at times.	0.75-1.25 m; 2.5 m at times	Slight; moderate at times.	Mainly fair.
Kankasanthurai to Trincomalee	20-30 kmph.	0.75-1.25 m.	Slight.	Mainly fair.
Trincomalee to Batticaloa	20-30 kmph.	0.75-1.25 m.	Slight.	Mainly fair.
Batticaloa to Pottuvil	20-30 kmph.	0.75-1.25 m.	Slight.	Showers or thunder showers will occur at several places.
Pottuvil to Hambantota	20-30 kmph; 40 kmph at times.	0.75-1.25 m; 2.5 m at times	Slight; moderate at times.	Showers or thunder showers will occur at several places.
Hambantota to Galle	20-30 kmph; 40 kmph at times.	0.75-1.25 m; 2.5 m at times	Slight; moderate at times.	Showers or thunder showers will occur at several places.
Galle to Colombo	20-30 kmph.	0.75-1.25 m.	Slight.	Showers or thunder showers will occur at several places.
Colombo to Puttalam	20-30 kmph.	0.75-1.25 m.	Slight.	Showers or thunder showers will occur at several places.

****Temporarily strong gusty winds (up to 60 -70 kmph) and very rough seas can be expected during Thundershowers.**

Marine Division
Department of Meteorology
Colombo 07, Sri Lanka
+94 112686686

For Safer Shipping

